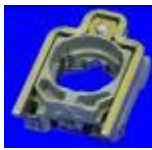


WIRING ACCESSORIES

Pushbutton switches with momentary contact, bore 22 mm diam, make Telemecanique



1



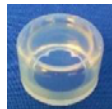
2



3



4



5



6

Cat.No.	Description	Type	Fig.
384101	Mounting base 1NO	ZB4BZ101	1
384102	Mounting base 1NC	ZB4BZ102	1
384103	Mounting base 2NO	ZB4BZ103	1
384104	Mounting base 2NC	ZB4BZ104	1
384105	Mounting base 1NO + 1NC	ZB4BZ105	1
384111	Mounting base	ZB4BZ009	2
384112	Contact block 1NO	ZBE101	
384113	Contact block 1NC	ZBE102	
384115	Contact block 2NO	ZBE203	
384117	Contact block 2NC	ZBE204	
384119	Contact block 1NO + 1NC	ZBE205	3
384121	Button white	ZB4BA1	4
384123	Button green	ZB4BA3	4
384125	Button red	ZB4BA4	4
384126	Button yellow	ZB4BA5	4
384127	Button blue	ZB4BA6	4
384129	Button grey	ZB4BA8	4
384130	Button black	ZB4BA2	4
384131	Transparent boot	ZBP0	5
384151	Adapter for hole diam. 30 mm	ZB2BZ4	6

Illuminated pushbutton switches with momentary contact, bore 22 mm diam, make Telemecanique



1



2

Cat.No.	Description	Type	Fig.
384135	Mounting base, contact block 1 NO and lampholder Ba9s for direct connection <250V 2.4W	ZB4BW061	1
384136	Mounting base, contact block 1 NC and lampholder Ba9s for direct connection <250V 2.4W	ZB4BW062	1
384137	Mounting base, contact block 2 NC and lampholder Ba9s for direct connection <250V 2.4W	ZB4BW063	1
384138	Mounting base, contact block 1NO + 1NC and lampholder Ba9s for direct connection <250V 2.4W	ZB4BW065	1
384139	Mounting base, transformer 110/120V 6V with pilot lamp and contact block 1 NO	ZB4BW031	2
384140	Mounting base, transformer 110/120V 6V with pilot lamp and contact block 1 NO + 1 NC	ZB4BW035	2
384141	Mounting base, transformer 230/240V 6V with pilot lamp and contact block 1 NO	ZB4BW041	2
384142	Mounting base, transformer 230/240V 6V with pilot lamp and contact block 1 NO + 1 NC	ZB4BW045	2
384143	Mounting base, transformer 400V (380V) 6V with pilot lamp and contact block 1 NO	ZB4BW051	2
384144	Mounting base, transformer 400V (380V) 6V with pilot lamp and contact block 1 NO + 1 NC	ZB4BW055	2