



EAST-OCEAN SHIP SERVICE LIMITED



East-ocean

SERVING YOU, SERVING OURSELVES



EAST-OCEAN SHIP SERVICE LIMITED

Our Full Style

East-ocean Ship Service Limited (In English)

集美船舶服務有限公司 (In Chinese)

舟山集美船舶技術服務有限公司 (In Chinese)

- Registry Address in Hong Kong: Room B3, 19/F, Tung Lee Commercial Building, 91-97 Jervois Street, Sheung Wan, Hong Kong
- Registry & Working Address in Zhoushan: 3rd Floor East, No.7 Lincheng Industrial Zone 4th Ave., Zhoushan City, China
- 浙江省舟山市定海区临城工业园四道 7 号 3 楼
- Tel /Fax: +86-580-8520152
- P.C: 316100
- E-mail: supply@east-ocean.net.cn (supply)
technical@east-ocean.net.cn (repair)
agency@east-ocean.net.cn (agent)
zs-ops@east-ocean.net.cn (agent)
tony_tu@east-ocean.net.cn (broker)

Organization

- Shipyard Brokering Team
- Port Agent Team
- Stores & Spare Parts & Provisions Supply Team
- Technical Services Team



EAST-OCEAN SHIP SERVICE LIMITED

Introduction

East-ocean Ship Service Limited is a qualified and professional international ship services company with business scope of ship-repairing broker, port agency, stores/spare parts & provisions supply, technical services, and ship engineering.

The company was founded in Jun 2016 and is located at downtown Zhoushan city, with 250 sq.m office and 500 sq.m warehouse. Presently there are total 16 personnel in the company.

East-ocean is committed to providing excellent services to foreign and domestic ship owners, and ship management companies, as well as repairing shipyards on basis of our business scope.

East-ocean is well managed by a professional team which is experienced in ship agency business and onboard services with high standard of working ability. The company is the ligament for business co-operation between shipowners and shipyards, by means of strong supporting from local MSA, Port Authorities, Customs, and Immigration Office, as well as good business reputation, comprehensive business network, well-rounded management experience, and proficient knowledge of rules and regulation in the industry.

Our staff are professional on marine technical services, dry-docking operations, and store/spare parts supply, as well as ship agency business.

East-ocean is also committed to providing the most comprehensive, economical and efficient ship-repairing services for international ship owners based on our professional operations and good relationship with shipyards mainly in the range of Zhoushan area.

The agency team is proficient on operations with sufficient experiences, knowing national and local rules and regulations related to the business and offering excellent services to our esteemed customers.

As a service provider, “Serving you, serving ourselves” is our core culture and mission. We fully understand the importance of occupational qualities and sincerity on serving our customers.



Service Scope

➤ **Dry-docking Broker**

We are official representative of qualified shipyards in Zhoushan as below

- LONGSHAN Shipyard
- XINYA Shipyard
- NASCO GROUP Shipyards
- CHANGHONG GROUP Shipyards
- IMCZY shipyard
- WEIHAI XINXIA shipyard
- Other shipyards in or out of Zhoushan area

As a professional broker, we provide all assistance to ship owners or managers when necessary.

➤ **Port Agent**

We are professional and qualified port agent for vessels calling at Zhoushan port especially for dry-docking operation with offering the most competitive prices on handling port formalities, spare parts custom clearance and delivery, crew change, and etc. Also, we are specialized in vessels for calling for bunkering, seller & buyer hand-over in Zhoushan official anchorages. We have close relationship with related port authorities especially the pilotage control station.

In recent years, our team has been dedicated to the procurement, import/export, and distribution of large and ultra-large marine spare parts, such as scrubbers and ballast water treatment system. By tailoring professional, efficient, and cost-effective logistics solutions to each specific part, we strive to serve as a leading brand for scrubber projects in China.

Moreover, we have rich experience in special and challenging vessels: urgent accidental damage repair call, towing vessels, semi-submersible barge loading and unloading job and etc.

Meantime, we can be the General Agent for vessels calling at majority of Chinese ports.

➤ **Technical Services**

We offer technical services to customers in aspect of supervising/assisting dry-docking repairs, Sales & Purchase inspection, technical advisor for onboard overhaul & troubleshooting, etc. Under owner's requirement, we can also arrange various shore services by professional workshops such as turbocharger overhaul, governor overhaul, automation system general service, lifeboat & liferaft service, FFE general inspection, engine overhaul, hydraulic system troubleshooting/repairs, provisions reefer system repair, hull gauging, and etc.



EAST-OCEAN SHIP SERVICE LIMITED

➤ **Stores & Provisions Supply**

We supply general stores, special stores/spare parts (water blaster, deck air compressor, mooring ropes, anchor chains, marine anti-corrosion materials, fire door and water-tight door, sheaves, pinion gears, steel pins, and other outfitting, and etc.), and provisions. Strictly following the quality standard of goods, saving every dollar for ship owners and managers is our essential concept. Furthermore, we supply all kinds of marine valve by cooperating with a major valve manufacturer in China.

We provide the service of overseas spare parts delivery for ships calling at Zhoushan, Xiamen and Zhangzhou port with high efficiency and competitive handling cost.

For stores/spare parts & provisions supply, our covering ports are as following:
Zhoushan, Ningbo, Xiamen, Zhangzhou, Quanzhou, Fangchenggang, Qinzhou, ports inside Yangtze River, Rizhao, Lanshan, Qingdao, Lianyungang, Shanghai, and etc.

➤ **Others**

If our customers require other information and assistance, we are delighted to offer our services as much as we can.

➤ **Our Core Customers**

Pacific Basin Shipping (HK)
Mitsubishi Corporation Shipping (Japan & Singapore)
Pacific Ship Management (Japan)
Eastern Car Liner (Japan)
Seiwa Navigation Corporation (Japan)
ChengXin Ship Management (Singapore)
PVTRANS Oilfield (Vietnam)



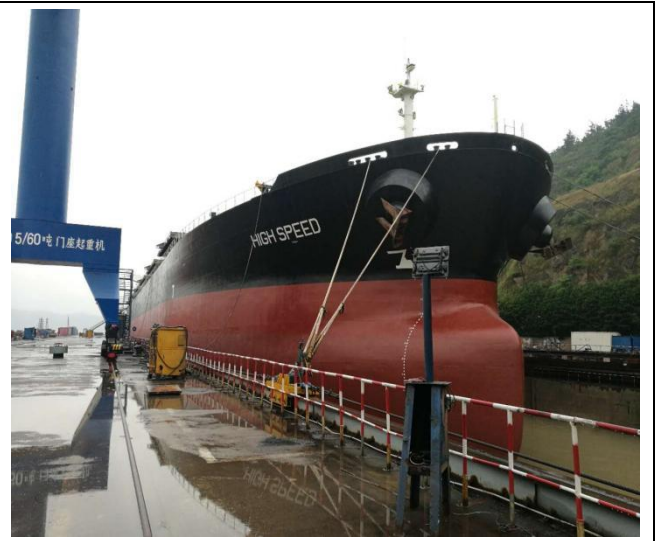
EAST-OCEAN SHIP SERVICE LIMITED

Sample of Vessels Served & Spare/Stores Supplied





EAST-OCEAN SHIP SERVICE LIMITED





EAST-OCEAN SHIP SERVICE LIMITED





EAST-OCEAN SHIP SERVICE LIMITED





EAST-OCEAN SHIP SERVICE LIMITED





EAST-OCEAN SHIP SERVICE LIMITED



Vessel dry-docking (as DD broker, port agent, and/or inspector)



New fabrication of water-tight door



Measuring fire door for new fabrication



Valve & air vent head with good quality



Special valve



EAST-OCEAN SHIP SERVICE LIMITED



Stainless steel valve



Butterfly valves with viton seat



Valve



Valve



Zinc anode & Aluminum anode



Zinc anode & Aluminum anode



EAST-OCEAN SHIP SERVICE LIMITED



Natural ventilator for hatch cover



Special gear for water-tight door



New fabrication of gear



New fabrication of sheave



New fabrication of pump impeller



New fabrication of pin



Special electrical cable for grab



Special electrical cable for grab



New fabrication of sea water strainer



Supply of screw type air compressor with air pot



Anchor chain supply



Anchor chain



EAST-OCEAN SHIP SERVICE LIMITED



Grab cable guide sheave



Grab cable guide sheave supply



Mooring rope supply



Mooring rope for newbuilding



Spark arrestor fabricated and installed



U-bolts with teflon gaskets



EAST-OCEAN SHIP SERVICE LIMITED



Stainless steel boxes



New fabrication of hydraulic ram knuckle



500 bar water-blaster





EAST-OCEAN SHIP SERVICE LIMITED



Hydraulic ram reconditioning/chroming





EAST-OCEAN SHIP SERVICE LIMITED



Anchor and swivel set renewal at Xiamen



BWTS transportation & delivery on board





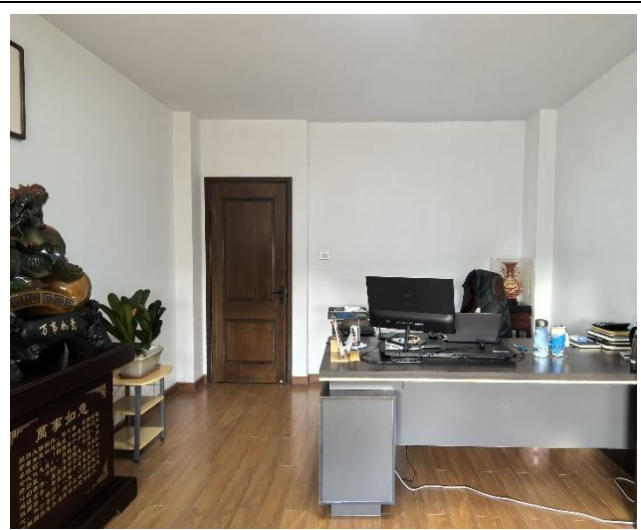
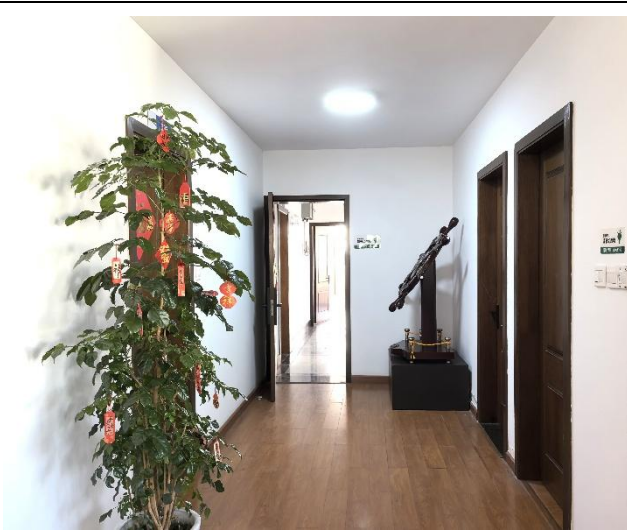
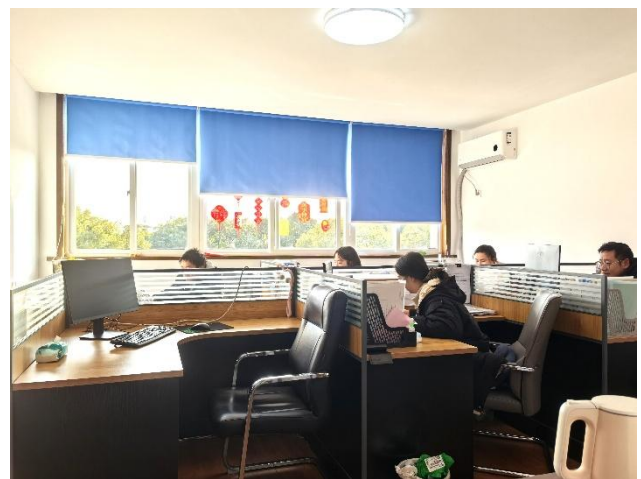
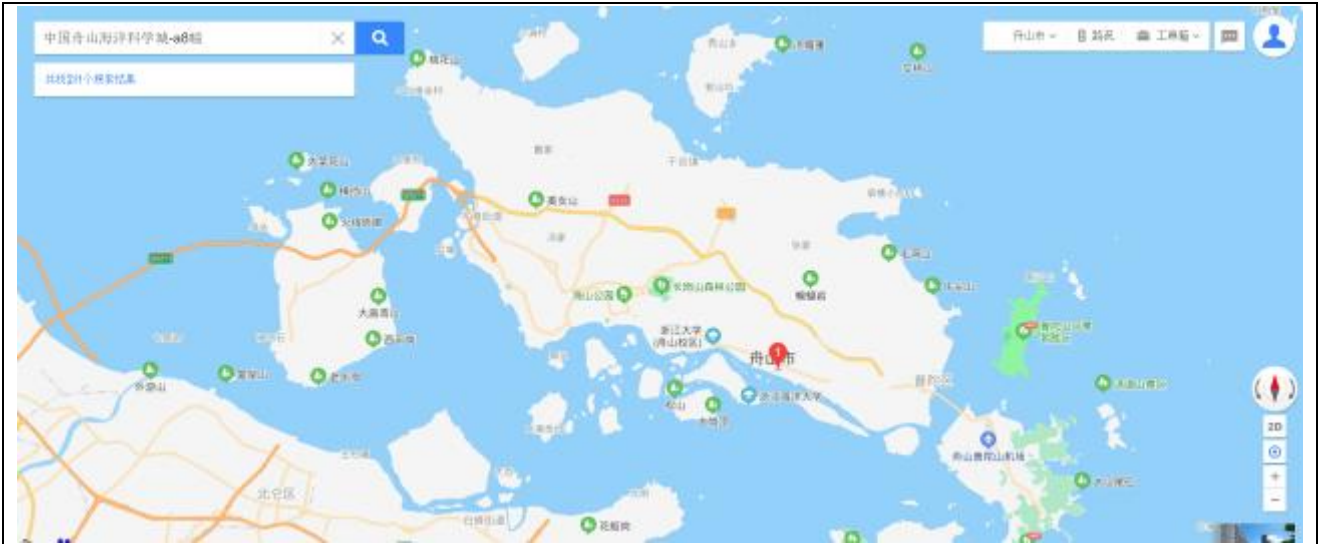
EAST-OCEAN SHIP SERVICE LIMITED



Scrubber transportation and delivery on board



Zhoushan Office View



Office is located at downtown Zhoushan



Zhoushan Port Information

General information

Port of Zhoushan is located at the coast of East China, on the mouth of Hangzhou Bay, and positioned at 30°00'30"N, 122°06'00"E. This area is back onto the Yangtze River Delta, the T-type conjunction of the Yangtze River economic zone and the eastern coastal economic zone where is the most developed area in China.

The port is also on the conjunction of the main coastal channels and the “golden waterway” of the Yangtze River. It is very convenient on traffic for Zhoushan where is 130n miles north away from Wusongkou of Shanghai, 433n miles north away from Tsingtao, 688n miles north away from Qinhuangdao, 824n miles south away from Guangzhou, 476n miles south away from Xiamen. The distance of the international air routes from Hong Kong, Keelung, Busan, Osaka and Kobe are less than 1000n miles. There is abundant deep water coastal line which is 183.2 km in length for port of Zhoushan.

Port of Zhoushan has long histories, and always is the important port for external trade of China. Under fast development with prioritized policy supporting by China central government, Zhoushan port is now the one of bases for mass bulk cargo (crude oil, mineral, coal, log, rice, etc.) transfer in Yangtze River Delta and the regions along the Yangtze River. There are 8 harbors in Zhoushan including Dinghai, Shenjiamen, Laotangshan, Gaoting, Qushan, Siqiao, Lvhuashan and Yangshan with total number of 352 berths for cargo operation. By conjunction with Ningbo, the Ningbo-Zhoushan port is the biggest port of cargo handling capacity in the world.

On the other hand, Zhoushan is almost the biggest base in China for ship-repairing and new-building. There are 8 major repairing shipyards and other more shipyards with small to medium size, which are able to meet international shipowners’ demand to dry-dock and repair all kinds of vessel. Zhoushan is also famous for ship new-building with massive production ability. The major new-building shipyards include COSCO Zhoushan, Tsuneishi Zhoushan, Jinhai Heavy Industry, Euro-China Shipbuilding, Pacific Offshore Heavy Industry, Changhong International, etc.

Harbor Industry is nowadays a pillar industries in national economy of Zhoushan. The China central government and local government are contributed to developing Zhoushan New District of Sea Industry as a national project.

Zhoushan is the main maritime open gateway to the world for the eastern coast of China and the Yangtze River basin. Six of the seven international main routes in and out of China pass through Zhoushan waters. Nearly 110,000 international vessels steam through Zhoushan waters, and more than 24,000 international vessels call Zhoushan annually. Whist, Zhoushan has more than 17 million cubic meters of bonded oil depot and can cover a wide range of bonded oil bunker scenes, such as inner and outer anchorage in port, berthing call in port, and cross-custom port area. With the most



EAST-OCEAN SHIP SERVICE LIMITED

complete bunker oil types and the most transparent prices in China, Zhoushan is the most efficient and comprehensive maritime service port in China, the first largest bunker supply port in China and the fourth largest bunker supply port in the world currently. In order to provide international shipowners with more convenient guide information on bunker supply in Zhoushan



Zhoushan Port and Shipyard Map



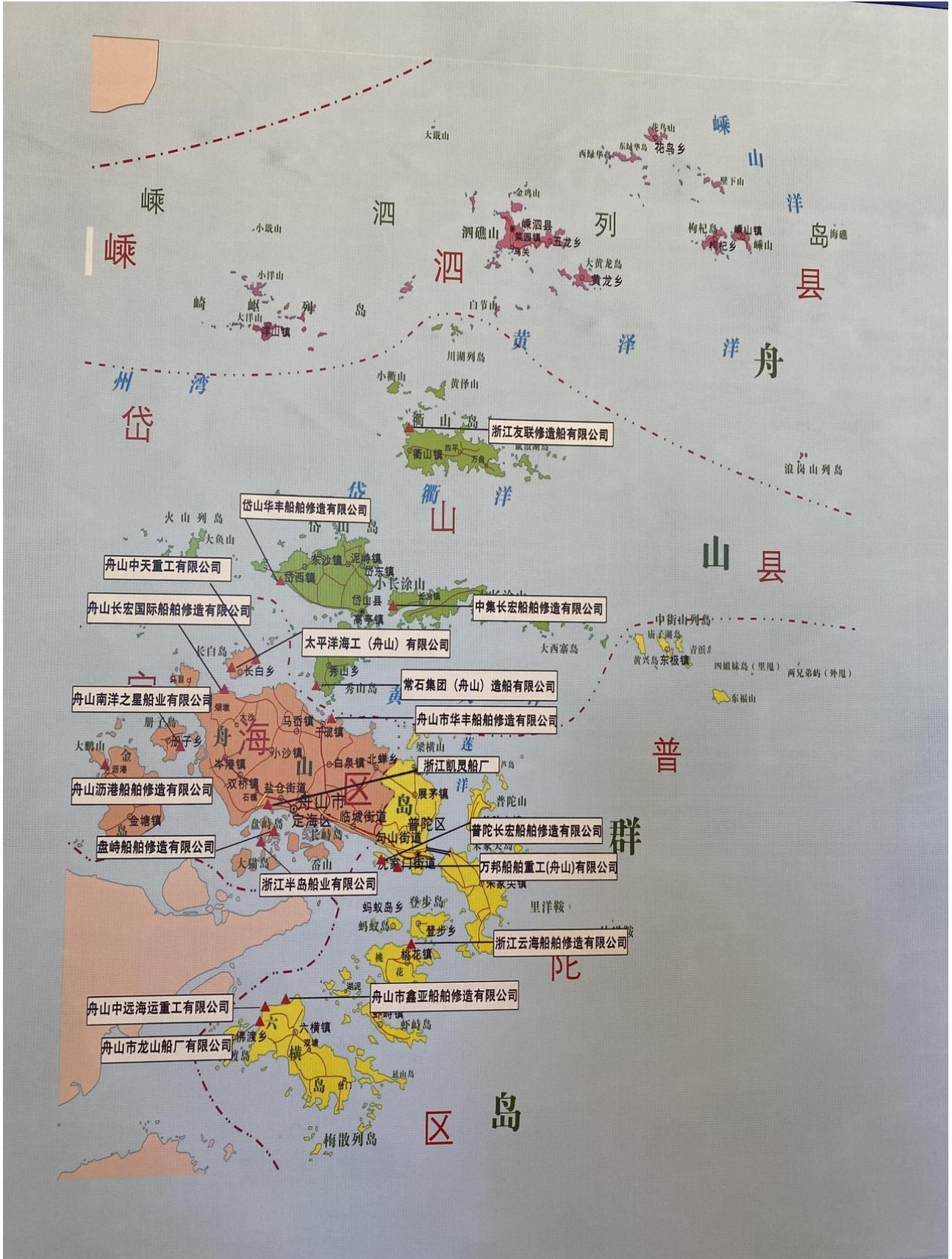


EAST-OCEAN SHIP SERVICE LIMITED





EAST-OCEAN SHIP SERVICE LIMITED





EAST-OCEAN SHIP SERVICE LIMITED

SERVING YOU, SERVING OURSELVES