



---

# Industrial Product Catalogue

Industrial, Oilfield & Engineering Supplies

**Digital Edition | 2026**

Head Office: 12-20 St. Joseph Rd., St. Joseph Village, San Fernando, Trinidad, W.I.  
Email: [industrial@dumore.co](mailto:industrial@dumore.co) | Website: <http://dumore.co>

---

Oilfield & Industrial Supplies  
(868) 225-4440

Transport Division  
(868) 225-5555

Rentals Division  
(868) 225-5555

DutorX Division  
(868) 225-7816

# PRODUCT CATEGORIES



**Fasteners**

**04**



**Lubrication,  
Chemicals &  
Adhesives**

**38**



**Anchors &  
Fixings**

**14**



**Hand Tools &  
Accessories**

**44**



**Screws, Pins  
& Rivets**

**18**



**Storage,  
Shelving &  
Racking**

**46**



**Gaskets &  
Sealing  
Solutions**

**22**



**Gloves & PPE**

**50**



**Pump & Valve  
Packing**

**32**



**Value Added  
Products**

**56**



**Pipe Fittings  
& Valves**

**34**



**BBI Tools**

**62**

# PRODUCT CATEGORIES



**Dutorx**  
**Custom**  
**Solutions**

80



**Connector**  
**Subsea**  
**Engineered**  
**Solutions**

91



**Enerpac**  
**Tooling**

81



**VideoRay**  
**Underwater**  
**Robotic**  
**Systems**

95



**On-Site**  
**Machining &**  
**Pipe Preparation**

83



**Pipeline**  
**Remediation**  
**Solutions**

96



**Torque Tools**  
**& Solutions**

84



**Snap-On**  
**Tools**

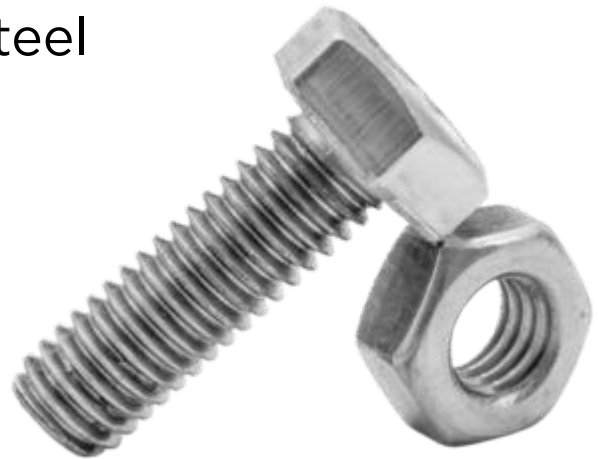
88

# FASTENERS

A comprehensive range of fastening solutions including bolts, nuts, washers, threaded bars, and banding systems, designed for strength, durability and reliability across industrial applications.

Includes:

- Imperial & metric fasteners
- Carbon steel, stainless steel & specialty materials
- Structural and general-purpose options



**Need assistance selecting the correct fastener for your application?**

Our team can advise on materials, standards and sizing.

# BOLTS

## Hex Cap Screws

- Washer face under head with chamfered point
- Commonly used in construction and repair projects
- Suitable for general-purpose fastening



**Available in:**

Imperial & Metric | Stainless steel | Brass | Carbon steel | Plain | Zinc | Galvanized | Silicone bronze

## Hex Flange Screws (Frame Bolts)

- Integrated flange distributes load and reduces need for washers
- Available in serrated and non-serrated options



**Available in:**

Imperial & Metric | Black phosphate | Zinc

## Socket Head Cap Screws

- Ideal for tight spaces where standard tools cannot fit
- Common in machinery, fixtures and clamping applications



**Available in:**

Imperial & Metric | Plain finish | Stainless steel

## Flat Socket-Head Cap Screws

- Used where a strong fastener is required to sit flush with the surface
- Countersunk head allows the screw to remain level once installed
- Commonly used in machinery, vehicles, tools, and tight-space assemblies



**Available in:**

Imperial & Metric | Plain finish | Stainless steel

# BOLTS

## U-Bolts

- U-shaped bolt threaded on both ends
- Commonly used for securing pipes, cables, machinery, and structural components

**Available in:**

Imperial & Metric | Stainless steel | Hot-dip galvanized | Zinc



## J-Bolts

- Hook-shaped bolt used for anchoring into concrete foundations
- Commonly used in structural and construction applications

**Available in:**

Imperial & Metric | Stainless steel | Hot-dip galvanized | Zinc



## Carriage Bolts

- Rounded head with square shoulder to prevent rotation during tightening
- Ideal where the bolt head is inaccessible or a smooth finish is required

**Available in:**

Imperial | Zinc | Stainless steel | Hot-dip galvanized



## Eye Bolts

- Designed for securing cables, wires, and lifting attachments
- Commonly used in rigging and fastening applications

**Available in:**

Imperial forged steel | Metric forged steel



# BOLTS

## Lag Bolts (Lag Screws)

- Heavy-duty fasteners used for connecting large pieces of wood or heavy materials
- Designed to carry high loads with strong holding power

**Available in:**

Imperial | Zinc | Stainless steel



## Tap End Studs

- Threaded on both ends for precise alignment and fastening
- Used where exact thread engagement is required

**Available in:**

Imperial & Metric | Stainless steel | Plain finish | Zinc | Cadmium



## Stud Bolts & Nuts

- Full thread studs and nuts for securing heavy-duty bolted joints
- Suitable for use in pipe flanges, pressure vessels, and machinery
- Designed for high-torque tightening and tensioning applications
- Allows for adjustment and consistent clamping force

**Available in:**

Hot dipped galvanized | Xylan coated | Cadmium | Zinc | Plain finish



# BOLTS

## Nord-Lock Superbolt (Multi-Jackbolt Tensioners)

- Mechanical tensioning systems for accurate tightening of large bolted assemblies
- Replaces standard nuts with multi-jackbolt tensioning technology
- Converts high preload requirements into manageable torque values

### Features:

- Eliminates need for hydraulic or impact tightening methods
- Allows controlled and accurate preload application
- Suitable for large fasteners and critical joint applications
- Designed for use in restricted or confined spaces



## Flange Protector Bands

- External sealing bands for protecting flanged joints from environmental exposure
- Designed to prevent corrosion of flange faces, gaskets, and fasteners
- Suitable for harsh and corrosive environments

### Features:

- Protects against moisture, salt spray, and debris
- Supports corrosion prevention through sealed flange environments
- Allows injection of corrosion-inhibiting grease via integrated fitting
- Extends service life of flanged connections



# NUTS

## Finish Hex Nuts

- General-purpose nut used for standard fastening applications

**Available in:**

Imperial & Metric | Stainless steel | Hot-dip galvanized | Plain finish | Zinc | Silicone bronze | Brass



## Heavy Hex Nuts

- Larger and stronger than standard hex nuts
- Used for structural and heavy-duty fastening

**Available in:**

Imperial & Metric | Stainless steel | Plain finish | Zinc | Galvanized | Xylan



## Hex Lock Nuts

- Built-in locking mechanism to resist loosening due to vibration

**Available in:**

Imperial & Metric | Zinc | Stainless steel



## Slotted (Castellated) Nuts

- Slotted design allows insertion of a cotter pin
- Commonly used in automotive and mechanical applications

**Available in:**

Imperial & Metric | Zinc



## Coupling Nuts

- Used to join threaded rods and other threaded components

**Available in:**

Imperial | Stainless steel | Zinc



# NUTS

## Acorn (Cap) Nuts

- Protective cap prevents thread damage
- Provides a finished appearance

**Available in:**

Imperial & Metric | Stainless steel | Zinc



## Machine Screw Nuts

- Used to secure machine screws in mechanical assemblies

**Available in:**

Imperial & Metric | Stainless steel | Plain finish | Zinc | Brass



## Wing Nuts

- Designed for hand tightening without tools
- Commonly used for adjustable or removable assemblies

**Available in:**

Imperial & Metric | Zinc | Stainless steel



## Tee Nuts

- Inserted into wood, plastic, or metal to create a flush threaded anchor

**Available in:**

Imperial & Metric | Zinc



# WASHERS

## Flat Washers

- Distributes load beneath the bolt head or nut
- Protects surfaces during tightening

**Available in:**

Imperial & Metric | Stainless steel | Zinc | Brass | Silicone bronze | Hot-dip galvanized | Plain finish | Copper finish | Xylan



## Lock Washers

- Prevents loosening caused by vibration and torque
- Commonly used with flat washers

**Available in:**

Various sizes and materials



## Belleville Washers

- Conical spring washer used to manage vibration and thermal expansion
- Helps maintain bolt tension

**Available in:**

Zinc | Stainless steel



## Beveled Washers

- Angled washer used to compensate for surface imperfections
- Commonly used with structural connections



# WASHERS

## Fender Washers

- Larger outer diameter for improved load distribution
- Frequently used with thin materials



## Neoprene Bonded Washers

- Rubber bonded washer creates a tight seal
- Ideal for plumbing and outdoor applications



## Nord-Lock Washers

- Wedge-locking washers designed to secure bolted joints under vibration and dynamic loads
- Uses tension-based locking rather than friction
- Pair of washers with cam faces and radial teeth create a locking wedge effect
- Prevents unintentional loosening in critical applications



# THREADED BAR

- Used for anchoring, bracing, and structural support
- Supplied in standard lengths and cut-to-size options
- Suitable for structural, industrial, and fabrication use
- ASTM High Strength threaded bars available in different strengths and exotic alloys

## Materials:

- ASTM A193 B16
- ASTM A193 B7
- ASTM A193 B7 / ASTM A320 L7 (Dual)
- ASTM A307 A & B
- ASTM A320 L7
- ASTM F1554 Grade 36
- Stainless steel 304
- Stainless steel 316
- Specialty alloys available

## Sizes:

- Imperial: #8 to 1½"
- Metric: M5 to M64



# ANCHORS & FIXINGS

Anchoring solutions designed for secure fastening into concrete, masonry, and structural substrates across industrial and construction applications.

Includes:

- Mechanical anchors for concrete and masonry
- Chemical anchoring systems
- Threaded rods and fixing accessories
- Specialty anchoring tools



## Need assistance selecting the right anchor for your application?

Our team can advise on anchor selection based on load requirements, substrate type, and installation conditions.

# CONCRETE & MASONRY ANCHORS

## Wedge Anchors

- Designed for anchoring into solid concrete
- Expands during installation for a secure hold

**Available in:**

Imperial | Stainless steel | Zinc | Hot-dip galvanized



## Sleeve Anchors

- Expands inside masonry materials for secure fastening
- Suitable for concrete and brick

**Available in:**

Imperial | Zinc | Stainless steel



## Screw Anchors

- Used in drywall or masonry to receive screws
- Provides holding strength in softer materials

**Available in:**

Imperial | blue coated



## Drop-In Anchors

- Internally threaded anchor installed flush with concrete
- Commonly used overhead

**Available in:**

Imperial



# ANCHORING SYSTEMS & ACCESSORIES

## Hammer Set Anchors

- Installed by driving a pin into a pre-drilled hole
- Used for light loads in masonry

**Available in:**  
Imperial



## Threaded Rods / Studs

- Used for anchoring and structural fastening
- Compatible with multiple anchor systems

**Available in:**  
Imperial & Metric | Zinc | Stainless steel | Plain finish | Cadmium plated | Galvanized



## Epoxy Anchoring Systems

Used to anchor threaded rods, rebar, and bolts into concrete

### G6+ Epoxy

- Performs in dry, wet, and water-filled holes
- Suitable for a wide range of environmental conditions



### Epoxy Injection Tool

- Used for application of anchoring epoxies



# SPECIALTY FIXINGS

## Powder-Activated Tools

- Used for fastening into concrete and steel
- Suitable for high-speed installation

### Available Models:

ISA270 | T3 | MD380 | D45



## Teflon Bar

- Used for specialty sealing and industrial applications



# SCREWS, PINS & RIVETS

Fastening and securing solutions designed for mechanical, construction, and general industrial applications.

Includes:

- Self-drilling, self-tapping, and machine screws
- Pins and riveting products
- Solutions for metal, wood, drywall, and machinery



**Need help selecting the right screw or fastening solution?**

Our team can advise on material selection, application suitability, and sizing.

# SCREWS

## Self-Drilling Screws

- Designed to drill their own hole without the need for a pilot hole
- Commonly used in metal-to-metal fastening



**Available in:**

Dacromet coated 410 Stainless steel | 316 Stainless steel | Zinc coated

## Drywall Screws

- Designed to fasten drywall without damaging the surface
- Can also be used for fastening into wood



**Available in:**

Black | Zinc

## Machine Screws

- Used to secure machine parts and mechanical components
- Commonly used in appliances and equipment



**Available in:**

Zinc | Stainless steel | Brass

## Socket Set Screws (Set Screws)

- Used to fasten objects within or against other objects without a nut
- Commonly used in mechanical assemblies

**Available in:**

Metric | Stainless steel | Plain finish



# SCREWS

## Thread-Cutting Screws

- Designed to create threads in pre-drilled holes
- Used for fastening into metal

**Available in:**

Stainless steel | Zinc | Plain finish



## Self-Tapping Screws

- Taps its own threads while being driven into materials
- Suitable for a variety of fastening applications

**Available in:**

Stainless steel | Zinc



## Wood Screws

- Designed for joining wood to wood
- Commonly used in construction and carpentry

**Available in:**

Zinc | Plain finish | Brass



# PINS & RIVETING PRODUCTS

## Cotter Pins

- Split pin used to secure clevis pins and other fasteners
- Prevents loosening during operation

**Available in:**

Imperial | Stainless steel | Zinc



## Rivets

- Permanent fastening solution for joining materials
- Commonly used in metal fabrication and assembly

**Available in:**

Imperial | Stainless steel | Aluminum | Steel



# GASKETS & SEALING SOLUTIONS

Sealing products designed to prevent leakage and maintain pressure integrity across industrial, oilfield, and mechanical applications.

Includes:

- Soft cut and semi-metallic gaskets
- Metallic and ring joint gaskets
- Flange insulation kits and sealing accessories



## Need help selecting the right gasket or sealing solution?

Our team can advise based on flange type, pressure rating, temperature, and application requirements.

# SOFT CUT GASKETS

- Used for low to medium pressure sealing applications
- Available in a wide range of materials and configurations

## Available:

- Sizes from ½" to 96"
- Ring, full-face, custom shapes, or full sheets
- Thicknesses from 1/100" to ½" (selected materials)

## Materials include:

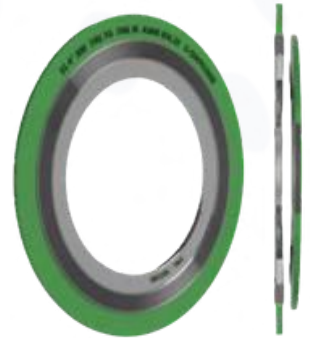
- Pilot Seal 164
- Pilot Flon 570
- TPilot 34 / Pilot 34R (wire reinforced)
- Pilot Seal 178
- Pilot Acid
- GHR Graphite Laminate
- Teflon
- Red rubber
- Insertion rubber
- Neoprene rubber
- EPDM rubber
- Viton rubber
- Butyl rubber
- Mule 166 jointed



# SEMI-METALLIC & METALLIC GASKETS

## Spiral Wound Gaskets

- Spiral-wound gaskets for sealing flanged joints across industrial applications
- Constructed with profiled metal winding and soft filler material
- Designed to provide compressibility and recovery under varying operating conditions
- Suitable for pressure and temperature-critical sealing applications



### Available in:

Various sizes and thicknesses | Multiple metal and filler material combinations | Standard and application-specific configurations

## Spiral Wound High Temperature Gaskets (VRM)

- Semi-metallic gaskets designed for high temperature and high pressure applications
- Utilises vermiculite filler material for thermal resistance and sealing performance
- Suitable for operation within flange design temperature and pressure limits
- Designed for critical sealing applications across industrial environments

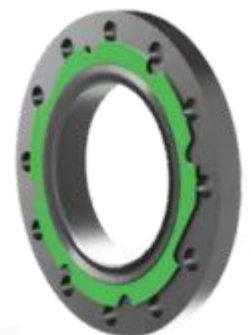


### Available in:

Spiral Wound Gasket (GSI) | Kammprofile (KP1, KP2 & KP3) | Extra Recovery Gasket (XRG, XRG-O)

## Spiral Wound Gasket - Dual Service

- Constructed with profiled metal winding and soft filler material
- “V” section metal winding provides compressibility and recovery under varying operating conditions
- Soft filler material improves sealing performance against flange faces
- Suitable for high pressure and temperature sealing applications



### Available in:

Various sizes and thicknesses | Multiple metal and filler material combinations | Standard and application-specific configurations

## Spiral Wound Gaskets - Low Load

- Constructed with profiled metal winding and soft filler material
- “V” section metal winding provides compressibility and recovery under varying operating conditions
- Soft filler material improves sealing performance against flange faces
- Suitable for pressure and temperature-critical sealing applications



### Features:

- Manufactured to ASME B16.20-2017 and EN1514-2 standards
- Available in a range of filler and alloy material combinations
- Suitable for pressure and temperature-critical sealing applications

## Spiral Wound Gaskets - Anti Buckling

- Constructed with profiled metal winding and soft filler material
- “V” section metal winding provides compressibility and recovery under varying operating conditions
- Soft filler material improves sealing performance against flange faces
- Suitable for pressure and temperature-critical sealing applications



## Spiral Wound Gaskets - MIL-G-24716A

- Constructed with profiled metal winding and soft filler material
- “V” section metal winding provides compressibility and recovery under varying operating conditions
- Soft filler material improves sealing performance against flange faces
- Suitable for pressure and temperature-critical sealing applications



### Available in:

- Style S (TY1) - Spiral wound gasket with metal winding and soft filler material
- Style GS (TY2) - Spiral wound gasket with solid metal outer guide ring

# SEMI-METALLIC & METALLIC GASKETS

## Kammprofile Gaskets

- Metal core gaskets with concentric serrations and flexible sealing material
- Designed for pressure vessels, heat exchangers, and thermal cycling applications
- Suitable for applications requiring lower gasket seating stress
- Solid metal core provides stability and blowout resistance



### Available in:

- KP-1: Serrated metal core for confined space and tongue & groove flange applications
- KP-2: Integral outer guide ring for alignment on raised face and flat face flanges
- KP-3 - Loose-fitting guide ring design for applications with thermal expansion

## ACHE Gaskets (Air Cooled Heat Exchanger)

- Kammprofile KP-1 style gaskets with serrated metal core and sealing layers
- Suitable for heat exchanger and critical sealing applications
- Available with 1/16" (1.6 mm) or 1/8" (3.2 mm) core thicknesses



### Available in:

Carbon steel | 304 stainless steel | 316 stainless steel  
Sealing Layers: Graphite | PTFE | Mica | Ceramic | CNAF |  
Additional materials available on request

## High Temperature Gaskets - HTG

- High temperature gaskets designed for applications exceeding standard graphite limits
- Combines mica and APX2<sup>®</sup> graphite sealing layers for thermal resistance
- Mica layers act as an oxidation barrier for improved high temperature performance
- Suitable for temperatures up to 1500°F (815°C)
- Designed for thermal cycling and oxidizing environments



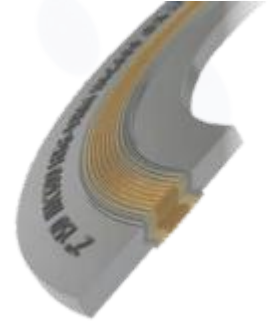
### Available in:

Spiral wound gasket styles S, SI, GS & GSI | Kammprofile styles KP-1, KP-2 & KP-3 |  
CMG-HTG configurations for thermal expansion and recovery applications

# SEMI-METALLIC & METALLIC GASKETS

## Vermiculite Gaskets (HTG-VRM)

- Semi-metallic gaskets designed for high temperature and high pressure applications
- Utilises vermiculite filler material with moisture and oxidation-resistant mica sealing layers
- Suitable for operation within flange design temperature and pressure limits
- Full material traceability available through etched MTR identification

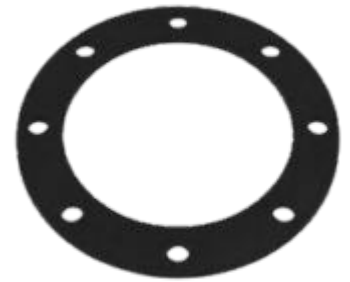


### Available in:

Spiral Wound Gasket (GSI) | Kammprofile (KP1, KP2 & KP3) | Extra Recovery Gasket (XRG, XRG-O)

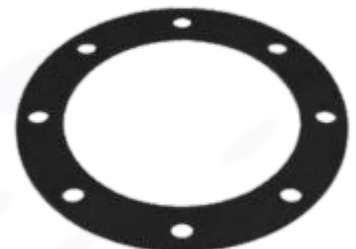
## Style GF Graphite Sheet

- High purity flexible graphite sheet with 316L stainless steel foil reinforcement
- Constructed with minimum 98% graphite without fillers or binders
- Designed for applications requiring lower bolt loads and reliable sealing performance
- Flexible graphite material conforms to irregular flange surfaces for improved sealing
- Suitable for a wide range of chemical applications, excluding strong oxidizing acids
- Offers low creep relaxation and chemical resistance properties



## Style GT Graphite Sheet

- High purity flexible graphite sheet with 316L stainless steel tanged reinforcement
- Constructed with minimum 98% graphite without fillers or binders
- Mechanically bonded to stainless steel core for added strength and stability
- Designed for reliable sealing performance in lower bolt load applications
- Suitable for irregular flange surfaces and a wide range of chemical applications
- Offers low creep relaxation and chemical resistance properties



# SEMI-METALLIC, METALLIC GASKETS & RING JOINT GASKETS

## NA-3S Sheet Jointing Material

- General-purpose sheet jointing material for light to medium gasket stress applications
- Constructed with aramid (Kevlar®) and synthetic fibres
- Bonded with high-quality nitrile rubber binder
- Suitable for a range of industrial sealing applications



## Jacketed & Solid Metal Gaskets

- Available in single jacketed, double jacketed, or solid metal designs
- Used for high-temperature & high-pressure applications

### Available in:

- Multiple styles to suit flange facing
- Exotic metal configurations



## Ring Joint Gaskets (RTJ)

- Manufactured in accordance with API 6A and ASME B16.20
- Designed for high-pressure oilfield applications

### Available in:

- RTJ Oval
- RTJ Octagonal
- RTJ RX
- RTJ BX
- Transition 377T
- Standard and exotic metals



# SPECIALTY GASKETS

## Boiler & Manhole Gaskets

- High temperature gaskets for boiler, manhole, and industrial sealing applications
- Manufactured with full material traceability through etched MTR identification
- Suitable for pressure and temperature-critical applications

**Available in:**

Spiral Wound | Kammprofile | Corrugated Metal  
Shapes: Round, Oval, Obround, Pear, Diamond



## Corrugated Metal Gaskets (CMG)

- Corrugated metal gaskets for piping, heat exchanger, and industrial sealing applications
- Suitable for Class 600lb piping systems and leak-prone applications
- Commonly used as a replacement for double jacketed gaskets
- Available with graphite or PTFE sealing facings
- Full material traceability through etched MTR identification

**Available in:**

CMG Graphite | CMG-PTFE (EPTFE) | CMG-FG-PTFE (EPTFE)



## Double Jacketed Gaskets (DJ)

- Double jacketed gaskets for heat exchanger and piping applications
- Manufactured with metallic jacket and soft filler material
- Available with graphite or PTFE filler options for varied operating conditions
- Suitable for pressure and temperature-critical sealing applications

**Available in:**

DJ100 - Standard double jacketed gasket | DJ200 - Double jacketed gasket with soft facing material | DJ300 - Corrugated double jacketed gasket | DJ400 - Multiple corrugated double jacketed gasket | DJ500 - Multiple corrugated double jacketed gasket with soft filler material



# SPECIALTY GASKETS

## Heat Exchanger Gaskets

- High performance gaskets for heat exchanger and industrial sealing applications
- Available in a range of metallic and sealing material combinations
- Suitable for pressure and temperature-critical environments

### Available in:

- Spiral Wound | Kamprofile | Corrugated Metal
- Shapes: Round, Oval, Obround, Pear, Diamond



## Valve Gaskets

- High performance gaskets for industrial valve sealing applications
- Suitable for gate, ball, butterfly, globe, check, plug, and relief valves
- Manufactured with full material traceability through etched MTR identification
- Available in a range of metallic and sealing material combinations

### Available in:

Spiral Wound Gaskets | Kamprofile Gaskets | Corrugated Metal Gaskets (CMG) | XRG (Extra Recovery Gaskets)



## Flange Isolation Gasket Kits

- Used to electrically isolate flanges and prevent corrosion

### Available in:

- RF and FF styles
- Compressed fiber
- Phenolic
- Rubber faced
- G10 glass epoxy



## Specialty Flange Isolation Kits

- Metallic Kammprofile isolation kits
- Used for demanding industrial applications

## Flange Protector Bands

- Protects flange faces during storage and transport
- Available in various styles and materials

# PUMP & VALVE PACKING

Compression packing and sealing solutions used to control leakage in pumps, valves, and rotating equipment operating under pressure and temperature.

Includes:

- Pump shaft packing
- Valve stem packing
- Braided packing materials
- Specialty sealing packing



## **Need help selecting the right packing material?**

Our team can advise based on media type, pressure, temperature, and equipment design.

# PUMP & VALVE PACKING

## Compression Packing

- Braided sealing packing material
- Used for pump and valve sealing applications

### Applications:

- Pumps
- Valves
- Rotating equipment



## Pump Packing

- Compression packing for rotating pump shafts
- Installed in pump stuffing boxes

### Applications:

- Centrifugal pumps
- Process pumps
- Utility pumps



## Valve Packing

- Compression packing for valve stem sealing
- Installed in valve packing glands

### Applications:

- Gate valves
- Globe valves
- Control valves



# PIPE FITTINGS & VALVES

Components used to connect, control, and direct the flow of liquids and gases across industrial and mechanical systems.

Includes:

- Threaded and flanged pipe fittings
- Valves for flow control and isolation
- Pipe and connection accessories



**Need help selecting the right pipe fitting or valve?**

Our team can advise based on system requirements, pressure ratings, and application conditions.

# PIPE FITTINGS

## Bushings

- Used to connect pipes of different diameters
- Commonly used in threaded piping systems

**Available in:**

- Imperial sizes: ½" to 4"



## Couplings

- Used to join two sections of pipe
- Suitable for repair and extension applications

**Available in:**

- Imperial sizes: 1/4" to 2"



## End Caps

- Used to close the end of a pipe or fitting
- Provides a secure seal

**Available in:**

- Imperial sizes: ½" to 1"



## Elbows

- Used to change the direction of pipe runs
- Available in various angles

**Available in:**

- Imperial sizes: ½" to 4"



## Flanges

- Used to connect pipes, valves, and equipment
- Allows for easy assembly and disassembly

**Available in:**

- Imperial sizes: ½" to 16"



# PIPE FITTINGS

## Nipples

- Short lengths of pipe used to connect fittings
- Common in threaded piping systems

**Available in:**

- Imperial sizes: 1/4" x 6"



## Pipe

- Used for the conveyance of liquids and gases
- Suitable for industrial piping systems

**Available in:**

- Imperial sizes: 1/2" to 6"



## Plugs

- Used to seal the end of a pipe or fitting
- Commonly used in maintenance applications

**Available in:**

- Imperial sizes: 1/2" to 1"



## Tees

- Used to combine or split fluid flow
- Common in branching pipe systems

**Available in:**

- Imperial sizes: 1/2" to 6"



## Unions

- Allows pipes to be disconnected without cutting
- Used where frequent maintenance is required

**Available in:**

- Imperial sizes: 1/2" to 1"



# VALVES

## Ball Valves

- Used for quick shut-off and flow control
- Provides tight sealing when closed

**Available in:**

- Imperial sizes: ½" to 2"



## Gate Valves

- Used to fully open or fully close flow
- Suitable for isolation applications

**Available in:**

- Imperial sizes: ¾" to 2"



## Pipe Cleaning Solutions (Pig)

- Pipeline pigging tools for internal pipe cleaning and maintenance
- Used to remove debris, buildup, and residue from pipe systems

**Applications:**

- Pipeline cleaning
- Line maintenance
- Flow assurance operations



# LUBRICATION, CHEMICALS & ADHESIVES

38

Industrial lubrication, sealing, and chemical solutions designed to reduce friction, protect components, and enhance equipment performance.

Includes:

- Industrial and food-grade lubricants
- Anti-seize compounds and threadlockers
- Sealants, adhesives, and specialty chemicals



**Need help selecting the right lubricant or chemical solution?**

Our team can advise based on application, environment, and compatibility requirements.

# INDUSTRIAL & FOOD-GRADE LUBRICATION

## Klüber Lubricants

High-performance industrial and specialty lubricants designed to reduce friction, extend equipment life, and improve operational reliability across demanding environments.

### Suitable for:

- Oil & Gas
- Petrochemical
- Marine
- Mining
- Power Generation
- Pumps & Rotating Equipment
- Overhead Cranes
- Food & Beverage Facilities

### Product Categories:

- Synthetic oils and greases
- Food-grade lubricants
- Gear and bearing lubricants
- Hydraulic oils
- Anti-seize compounds
- High-temperature lubricants
- Chain and compressor oils



# ANTI-SEIZE & THREAD LUBRICATION

## Vibra-Tite Anti-Seize Compounds

### Vibra-Tite 908 Food-Grade Anti-Seize

- Protects metal parts from seizing and corrosion
- Suitable where incidental food contact may occur



### Vibra-Tite 9072 Nickel Anti-Seize

- Designed for extreme temperature applications
- Resistant to harsh chemical environments



### Vibra-Tite 9071 Copper Anti-Seize

- Ideal for softer metals
- Provides protection against galling and corrosion



### Vibra-Tite 906 Marine-Grade Anti-Seize

- Protects assemblies exposed to fresh and salt water
- Suitable for high-humidity environments



## Torque Wrench Moly Paste

- Lubricating paste for threaded fasteners including bolts, nuts, and studs
- Reduces friction for controlled and consistent bolt tightening
- Designed for reliable assembly and disassembly under heat, load, and vibration
- Suitable for operating temperatures from -29°C to 400°C (-20°F to 750°F)



# THREADLOCKERS & SEALANTS

## Vibra-Tite Threadlockers

### Vibra-Tite 121 Medium-Strength Threadlocker

- Designed to secure threaded fasteners
- Allows disassembly with standard hand tools



### Vibra-Tite VC-3 Threadmate

- Flexible, reusable threadlocking solution
- Absorbs vibration without forming a hard bond



### Vibra-Tite 125 Medium-Strength Gel Threadlocker

- No-drip gel formulation
- Suitable for vertical applications

<https://www.youtube.com/watch?v=JFuqKGVYtG4>



### Vibra-Tite 131 High-Strength Threadlocker

- Designed for permanent fastening applications



### Vibra-Tite 135 High-Strength Gel Threadlocker

- High-strength locking with no-drip gel formulation

<https://www.youtube.com/watch?v=JFuqKGVYtG4>



# THREADLOCKERS & SEALANTS

## Vibra-Tite Sealants & Gasket Makers

### Thread Sealant

- Seals metal pipe threads to prevent leakage
- Suitable for low and high-pressure systems



### 710 High-Temperature Rigid Flange Sealant

- Designed for rigid machined metal flanges



### 730 Flexible Solvent-Resistant Gasket Maker

- Provides an instant low-pressure seal
- Suitable for rigid metal surfaces



### 732 Flexible Gasket Maker

- Forms a tough, flexible gasket in place
- Commonly used in pumps and gearbox covers



### RTV Silicone Gasket Makers

- Copper (992)
- Heavy Body Black (993)
- Clear RTV (995)
- Red RTV (996)
- Black RTV (998)
- Grey RTV (999)



# SPECIALTY CHEMICALS & MAINTENANCE PRODUCTS

## WD-40 Specialist Products

- Dry Lube PTFE Spray
- Spray & Stay Gel Lubricant
- Water-Resistant Silicone Lubricant
- White Lithium Grease
- Rust Release Penetrant
- Rust Remover Soak
- Long-Term Corrosion Inhibitor
- Industrial-Strength Degreaser
- Electrical Contact Cleaner
- Machine & Engine Degreaser



## Vibra-Tite Drive-Grip

- Anti cam-out compound for screw fastening
- Increases grip between tool and fastener



## Vibra-Tite Super Glue

- Instant adhesive for fast bonding
- Suitable for multiple material types



General-purpose tools and accessories, including hand tools, power tools, and specialty equipment used for installation, maintenance, and repair across industrial applications.

Includes:

- Threading and drilling tools
- Safety and specialty accessories
- Hand and power tools



**Need help selecting the right tool for the job?**

Our team can advise on tool selection based on application and material type.

# HAND TOOLS & ACCESSORIES

## Taps

- Used to cut internal threads
- Suitable for maintenance and fabrication

### Available in:

- Imperial: No. 10 to 1"
- Metric: M6 to M24



## Dies

- Used to cut external threads
- Commonly used in threading applications

### Available in:

- Imperial: No. 10 to 1"
- Metric: M6 to M24

## Drill Bits

- Used for drilling holes prior to fastening
- Suitable for various materials

### Available in:

- Imperial and Metric sizes



## The Finger Saver

- Keeps hands away from impact and pinch points
- Used with flogging spanners and torque equipment

### Available in:

- 14.75" (37.5 cm)
- 33.5" (85.1 cm)
- <https://www.youtube.com/watch?v=9ZqxAbm5w1U>



Organised storage and structural support solutions designed to improve efficiency, safety, and space utilisation in industrial environments.

Includes:

- Framing and support systems
- Modular shelving and bin storage
- Pallet racking and warehouse solutions



## Need help selecting the right storage solution?

Our team can advise based on load requirements, space constraints, and application needs.

# FRAMING & SUPPORT SYSTEMS

## Engineered Strut Solutions

### Channels

- Structural framing channels used for mounting and support



### Prime Angle

- Angled framing component used for bracing and structural support



### Spring Nuts

- Used with Unistrut channels for quick installation



### Flat Plate Fittings

- Connects channels and components



### Pipe Clamps

- Secures pipes to framing systems



### Beam Clamps

- Attaches framing to structural beams



### 90-Degree Fittings

- Used for right-angle connections



### End Caps

- Finishing caps for channel ends



### Trolley Assemblies

- Allows movement along channel systems



# MODULAR SHELVING & BIN STORAGE

## Quantum Storage

### Shelving Post Kits

- Modular shelving system components

#### Available in:

- 39" height
- 75" height

<http://www.quantumstorage.com/>

### Shelving Bins

- Plastic storage bins for small parts organisation
- Designed for shelf and rack storage systems
- Suitable for workshops, warehouses, and maintenance stores

#### Available in:

- Sizes from 4 1/8" - 16 1/2"

### Shelves

- Steel shelving units for modular systems

#### Available in:

- 18" x 36"
- 24" x 36"



# PALLET RACKING SYSTEMS

## Pallet Racking

- Heavy-duty storage system for warehouse and industrial use

## Uprights

- Vertical support structures

### Available in:

- Heights from 7 ft to 14 ft

## Beams

- Horizontal load-bearing members

### Available in:

- 108" length

## Wire Decks

- Supports pallets and improves safety

### Available in:

- 36" × 52"
- 42" × 52"

## Post Protectors

- Protects rack uprights from impact damage



# GLOVES & PPE

Protective handwear designed for safety, durability, and performance across industrial and maintenance environments.

Includes:

- Task-specific industrial gloves
- Mechanical and chemical handling protection
- General and specialty hand protection



## Need help selecting the right glove for the job?

Our team can advise based on hazard type, work environment, and protection level.

# GLOVES & PPE

## Kong® Original

- Oil & gas industry protection glove with reinforced back-of-hand impact protection
- Designed for heavy industrial and field environments

### Best Uses:

- Oil & gas operations
- Heavy industrial work



## Kong® Rigger

- Designed specifically for rigging and cable handling
- Reinforced rope channel for extended wear resistance

### Best Uses:

- Rigging
- Cable and rope handling



## Kong® Operator

- Lightweight, breathable glove with impact protection
- Designed for light-duty field and rig work

### Best Uses:

- Crane operation
- Field supervision
- Mechanical tasks



## Industrial Impact Rigger

- Insulated and waterproof
- Reinforced palm and impact protection design
- Built for cold and wet heavy-duty environments

### Best Uses:

- Cold weather work
- Wet industrial environments
- Heavy rigging



# GLOVES & PPE

## Framer

- Reinforced palm and fingertip durability
- Designed for framing and construction tasks

### Best Uses:

- Framing and carpentry work
- Construction site tasks
- Repetitive hammer and hand-tool use



## Workcrew Ironclad

- Light-duty all-purpose work glove
- Comfort fit with everyday protection

### Best Uses:

- Mechanical work
- Tool handling
- Shop and maintenance tasks



## Vibration Impact

- Gel-padded palm zones to reduce vibration fatigue
- Designed for extended power tool operation

### Best Uses:

- Impact tool use
- Vibrating equipment



## Box Handler®

- High-grip palm with reinforced handling surface
- Designed for secure grip on packages and materials

### Best Uses:

- Material handling
- Heavy cable and wire handling
- Equipment operation



# GLOVES & PPE

## Dexterity Super Grip (Kong®)

- High-dexterity glove with enhanced grip performance
- Maintains control on wet and oily surfaces

### Best Uses:

- Precision handling
- Oily or slippery materials



## Heavy Utility

- Long-wearing utility glove with reinforced durability zones
- Designed for abrasion resistance and tactile control

### Best Uses:

- Construction
- Landscaping
- Cable and wire work



## Kong® Deck Crew Cut 5

- Multi-layer palm with high abrasion resistance
- Cut-resistant protection with oil and water treatment

### Best Uses:

- High-risk handling tasks
- Oil & gas environments



## Kong® Slip & Oil Resistant

- Full-palm oil-resistant grip technology
- Channels oil and sludge away from contact surface

### Best Uses:

- Slippery materials
- Oily environments



# GLOVES & PPE

## General Utility

- Multi-purpose protective glove
- Designed for everyday industrial tasks

### Best Uses:

- General maintenance work
- Warehouse and shop handling
- Light construction tasks



## Ironclad Stick Welder

- Heat-resistant glove for welding tasks
- Extended cuff and spark protection

### Best Uses:

- Stick welding operations
- Hot work environments
- Metal fabrication tasks



## Knit Cut 3

- Cut-resistant knit glove
- Designed for moderate cut hazards

### Best Uses:

- Moderate cut-risk handling
- Sheet material handling
- Assembly and fabrication work



## Knit Cut Level 5

- High cut-resistant knit glove
- Designed for high-risk cut environments

### Best Uses:

- High cut-risk environments
- Sharp material handling
- Glass and metal work



# GLOVES & PPE

## Modern Water Resistant

- Water-resistant outer construction
- Maintains grip in damp conditions

### Best Uses:

- Wet job sites
- Outdoor maintenance work
- Damp material handling



## Rigger Cut 5

- Rigging glove with cut level 5 protection
- Reinforced for rope and cable handling

### Best Uses:

- Rigging and cable handling
- Lifting operations
- Cut-risk rope work



# VALUE ADDED PRODUCTS

Specialty repair products, threaded insert systems, and electrical and cable management accessories for installation and maintenance applications.

Includes:

- Thread repair and insert systems
- Coatings and repair compounds
- Cable and wire management products
- Banding and strapping systems (Band-It)



## Need help selecting the right repair or insert solution?

Our team can advise based on material type, load needs, and installation method.

# VALUE ADDED PRODUCTS

## Cutting Blades

- Industrial cutting blades for field and shop use
- Suitable for general cutting applications

### Applications:

- Maintenance work
- Shop fabrication
- Field repair tasks

## ZRC Coating

- Zinc-rich galvanizing repair coating
- Designed for hot dip galvanizing touch-up and repair

### Applications:

- Galvanized surface repair
- Field touch-up work
- Corrosion protection

<https://www.youtube.com/watch?v=jzATFrIIN4Y>



## E-Z LOK Threaded Repair

- Thread repair inserts for damaged threads
- Restores stripped or worn threaded holes

### Applications:

- Thread repair
- Maintenance restoration
- Equipment repair

<https://youtu.be/5-eTfunHApk?si=tECXaLxNSS2fi7Ap>



## E-Z LOK Hard Wood Inserts

- Threaded inserts for hard wood applications
- Provides durable machine threads in wood

### Applications:

- Hardwood assemblies
- Furniture and fixtures
- Repeated fastener use



# VALUE ADDED PRODUCTS

## Solid Threaded Inserts for Metal

- Solid steel threaded inserts for metal repair
- Designed for high-strength thread restoration

### Applications:

- Metal thread repair
- High-load fastening points
- Equipment maintenance



## Coil Threaded Inserts

- Coil-style inserts for thread repair in softer metals
- Protects against stripping and wear

### Applications:

- Soft metal threads
- Thread reinforcement
- Repair work



## Hex Drive Inserts for Wood

- Hex-drive threaded inserts for wood
- Installed using hex drive tools

### Applications:

- Wood assemblies
- Furniture builds
- Structural wood fastening



## Press Inserts for Plastic

- Press-fit threaded inserts for plastic components
- Designed for post-molding installation

### Applications:

- Plastic housings
- Molded parts
- Assembly inserts



# VALUE ADDED PRODUCTS

## MICRO PLASTICS & CABLE MANAGEMENT

### Nail-In Cable Clips

- Nail-in clips for securing cable runs
- Designed for fast surface mounting

**Available in:**

- Sizes from 4 mm to 18.7 mm



### Split Loom

- Split tubing for wire and cable protection
- Provides abrasion resistance and bundling

**Available in:**

- 1/2" and 5/8" sizes



### Safety Spiral Wrap

- Spiral wrap for cable bundling and protection
- Flexible routing and abrasion resistance

**Available in:**

- 1/4" to 1" sizes



### Label Tie Cable Ties

- Cable ties with labeling tab
- Allows cable identification and bundling

**Applications:**

- Cable labeling
- Wire management
- Panel work



# VALUE ADDED PRODUCTS

## Wire Connectors

- Twist-on wire connectors
- Used for electrical wire joining

### Applications:

- Electrical connections
- Wire splicing
- Panel wiring



## Cable Glands

- Cable entry glands for enclosure sealing
- Provides strain relief and protection

### Available in:

- ¼" to 1½" sizes



## Hex Jam Nuts

- Thin-profile hex jam nuts
- Used for locking and spacing

### Available in:

- ¼" to 1¼" sizes



## Nylon Ties

- Nylon cable ties for bundling and fastening
- Designed for secure cable management

### Available in:

- 5" to 48" lengths



## Cable Tie Installation Tools

- Installation tools for cable tie tensioning and cutting
- Designed for consistent tie application

### Applications:

- Cable tie installation
- Panel assembly
- Wire bundling



# VALUE ADDED PRODUCTS

## Band-It Banding & Strapping Systems

Stainless steel banding and fastening systems for securing, clamping, and bundling across industrial applications.

### Includes:

- Stainless steel banding
- Buckles and clips
- Banding tools and accessories

### Applications:

- Pipe and cable securing
- Signage and mounting
- Industrial and marine environments





## 1/4" Drive Standard Socket Master Set (48 Piece)

- PROFERRED 1/4" Drive 6-point socket and bit master set
- Includes SAE + Metric sockets plus driver bits and accessories

### Includes:

- SAE + Metric 6-point sockets
- Bit set (Torx / Phillips / Hex - as shown)
- Ratchet handle, extension bar, universal joint, hex adapter



## 3/8" Drive Standard Socket Master Set (37 Piece)

- PROFERRED 3/8" drive master set for general service and maintenance
- Includes SAE + Metric sockets and key drive accessories

### Includes:

- SAE + Metric sockets (6-point - as shown)
- Ratchet handle, flex handle (breaker bar), extensions
- Universal joint and adapters



## 1/2" Drive Standard Socket Master Set (21 Piece)

- PROFERRED 1/2" drive 12-point SAE socket set for heavier-duty fastening
- Built for maintenance and mechanical applications

### Includes:

- SAE 12-point sockets (size range as shown)
- Ratchet handle, flex handle (breaker bar), extensions
- Universal joint / adapter (as shown)



## 3/4" Drive Standard Socket Master Set (15 Piece)

- PROFERRED 3/4" drive 12-point SAE socket master set for high-torque work
- Suitable for heavy industrial applications

### Includes:

- SAE 12-point sockets (size range as shown)
- Ratchet handle, flex handle (breaker bar)
- Extension bars (as shown)



## 1/2" Drive SAE 12-Point Standard/Deep Chrome Sockets

- Chrome sockets for 1/2" drive SAE applications
- Standard and deep options for access and reach

### Sizes:

- Standard chrome sockets: 3/8" to 1-1/4"
- Deep chrome sockets: 5/16" to 1"



## 1/2" Drive Metric 12-Point Standard/Deep Chrome Sockets

- Chrome sockets for 1/2" drive Metric applications
- Standard and deep options for improved access

### Sizes:

- Standard chrome sockets: 10 mm to 24 mm



## 3/4" Drive SAE 6-Point Deep Impact Sockets

- Deep impact sockets designed for high-torque and impact use
- 6-point drive for secure grip and reduced rounding

### Sizes:

- Deep impact sockets: 1" to 1-1/2"



## 3/4" Drive Metric Deep Impact Sockets

- Deep impact sockets for heavy-duty Metric applications
- Designed for impact tools and high-load fastening

### Sizes:

- Metric deep impact sockets: 26 mm to 38 mm



## 1/4" Drive Tiny bone 5-in-1 Ratchet Handle

- Compact ratchet handle designed for tight access areas
- Multi-function design for versatile fastening

### Includes:

- 5-in-1 ratchet handle (as shown)



## Socket Accessories & Ratchets

- Drive accessories for ratchets and socket systems
- Includes extensions, flex handles, adapters, and universal joints

### Available in:

- Ratchet handles (multiple drive sizes)
- Flex handles (breaker bars)
- Extension bars (multiple lengths)
- Universal joints and adapters (as shown)



## Aviation Snips

- Aviation snips for sheet metal cutting applications
- Multiple cut styles for jobsite versatility

### Available in:

- Straight cut / Left cut / Right cut
- Notch cut / Long cut

### Features:

- Cuts up to 1.2 mm cold rolled steel or 0.7 mm AISI-304 stainless steel
- Serrated blades; induction-hardened edges
- Chrome-molybdenum alloy steel blades



## Heavy Duty Adjustable Wrench

### Industrial Black Phosphate

- Heavy-duty adjustable wrench for industrial service
- Designed for improved access and stable jaw setting

### Available in:

- Lengths: 6", 8", 10", 12", 15", 18", 24"

### Features:

- Raised head design reduces unintended jaw changes
- 15° offset for tighter working areas
- Thin jaw improves access; wide grip opening



## Heavy Duty Adjustable Wrench

### Chrome Finish

- Adjustable wrench with chrome finish for corrosion resistance
- Designed for general mechanical and industrial use

### Available in:

- Lengths: 4", 6", 8", 10", 12", 15", 18", 24"

### Features:

- Raised head design; 15° offset
- Thin jaw improves access; wide grip opening



## Tiger's Paw™ Adjustable Wrench with Padded Handle

- Adjustable wrench with padded handle for comfort and control
- Designed to reduce slippage while protecting fastener corners

### Available in:

- Lengths: 6", 8", 10", 12"

### Features:

- Jaw teeth protect corners while reducing slippage
- Anti-slip TPR grip for comfort



## Quick Snap Adjustable Wrench

- Quick-release jaw for fast setting and adjustment
- Designed to fit SAE and Metric fastener specifications

### Available in:

- Length: 8"

### Features:

- Quick release jaw for one-pull adjustment
- Dual teeth fit SAE and Metric fasteners
- Micro-adjusting movable pad for convenient operation



## Mining Adjustable Wrench with Hammer

- Multi-function tool combining wrench and hammer capability
- Designed for rugged industrial and mining environments

### Available in:

- Length: 12"

### Features:

- Rust resistant SAE 6140 steel
- Fully heat treated; ergonomically designed grip
- Includes holster belt clip with chain (as shown)



## Pipe Wrench

- Forged steel pipe wrench for gripping and turning pipe
- Long weighted handle for stability and leverage

### Available in:

- Lengths: 14" and 18"

### Features:

- 14" handles up to 2" diameter pipe
- 18" handles up to 2-1/2" diameter pipe



## High Leverage Heavy Duty Lineman's Pliers - TPR Grip

- High leverage design for increased cutting power
- Diamond teeth design for improved grip

### Available in:

- Lengths: 8.5" and 9.5"

### Features:

- Hardened cutting edge for wire cutting
- Ergonomic anti-fatigue comfort grip



## Straight Jaw Groove Joint Pliers - Coated Grip

- Wide jaw adjustment range with machined jaw grooves
- Slip-joint design for versatility

### Available in:

- Lengths: 8", 10", 12", 16", 20"

### Features:

- Non-slip cushion grips
- Wide range of jaw adjustments



## Diagonal Cutting Pliers - TPR Grip

- Hardened cutting edge for wire cutting
- Designed for durability and extended cutting life

### Available in:

- Length: 6"

### Features:

- Ergonomic anti-fatigue comfort grip



## High Leverage Heavy Duty Diagonal Pliers - TPR Grip

- High leverage design for increased cutting power
- Hardened cutting edge for durability

### Available in:

- Lengths: 7", 8"

### Features:

- Ergonomic anti-fatigue comfort grip



## Side Cutting Long Nose Pliers - TPR Grip

- Long nose profile for access in tight spaces
- Diamond tooth design for improved gripping

### Available in:

- Lengths: 6", 7"

### Features:

- Hardened cutting edge for wire cutting
- Ergonomic anti-fatigue comfort grip



## Long Nose Pliers Without Cutter - TPR Grip

- Long nose profile for tight and narrow spaces
- Designed for gripping and positioning

### Available in:

- Length: 6"

### Features:

- Diamond tooth design for improved grip
- Ergonomic anti-fatigue comfort grip



## All Purpose 7-in-1 Angle Nose Pliers

- Multi-function pliers for crimping, stripping, and cutting
- Angled head design improves access and flexibility

### Available in:

- Length: 8"

### Features:

- Crimps & strips multiple wire ranges (as shown)
- Induction-hardened cutting edges
- Thumb lock mechanism; ergonomic comfort grip



## Curved Jaw Locking Pliers

- Locking pliers for firm gripping and controlled release
- Designed for durable clamping performance

### Features:

- Cr-Mo steel jaw and handle
- Heat treated body; easy release grip
- Knurled torque adjustment screw



## Locking C-Clamp

- Locking clamp tool for secure holding and fastening
- Designed for durability and adjustable fit

### Features:

- Chrome vanadium steel construction
- Hardened teeth for longevity
- Quick adjust and release
- Nickel plated for corrosion resistance



## Long Nose Jaw Locking Pliers

- Long nose locking pliers for narrow access areas
- Designed for gripping and wire cutting capability

### Features:

- Cr-Mo steel jaw and handle
- Heat treated body; nickel plated
- Easy release grip; torque adjustment screw with wire cutter



## Retaining Snap Ring Pliers

- Internal and external snap ring pliers
- Adjustable design with interchangeable tips

### Features:

- Spring loaded handle
- Tip change set (45°, 90°, straight)
- Extra tips included



## Acetate Cushion Grip Screwdriver

- Color-coded handle for quick identification (Slotted / Phillips)
- Cushion grip provides slip resistance to chemicals and oils

### Available in:

- Slotted: 3/16"x4", 3/16"x6", 1/4"x4", 1/4"x6", 1/4"x8"
- Phillips: #1x4", #2x4", #2x6", #2x8", #3x6", #3x8"

### Features:

- Treated tip ensures improved fit
- Cellulose acetate handle material



## Insulated (1000V) Screwdriver

- Dual-layer insulated design for electrical work
- Cushion grip provides slip resistance to chemicals and oils

### Available in:

- Slotted: 3/32"x3", 1/8"x4", 7/32"x5", 1/4"x6", 5/16"x7"
- Phillips: #0x2-3/8", #1x3-3/16", #2x4", #3x6"

### Features:

- Designed for protection against electric shock
- Dual material PP & TPV grip



## 5-in-1 Stubby Bit Drive Set

- Compact stubby driver for tight access areas
- Includes interchangeable bits and nut driver

### Includes:

- Bit holder driver
- Phillips bits #1, #2
- Slotted bits 3/16", 1/4"
- Nut driver 1/4"



## 9-in-1 Regular Bit Drive Set

- Multi-bit driver set for general fastening tasks
- Cushion grip handle with interchangeable bits

### Includes:

- Phillips Bits: #1, #2,
- Slotted Bits: 3/16", 1/4"
- TORX® Bits: T15, T20, Nut Drivers: 1/4", 5/16", 3/8" "



## 14-in-1 Precision Bit Drive Set

- Precision bit driver set for fine mechanical work
- Locking bit holder system maintains blade length

### Includes:

- Phillips Bits: #000, #00, #0
- Slotted Bits: 1/16", 5/64", 1/8"
- TORX® Bits: T5, T6, T7, T8
- Hex Bits: 5/64", 3/32", 1/8", 5/32
- Precision driver handle and case



## 19-in-1 Ratcheting Screwdriver Drive Set

- Ratcheting screwdriver set with interchangeable bits
- Designed for high-speed fastening action

### Includes:

- Phillips Bits: #1, #2, #3
- Slotted Bits: 3/16", 1/4", 5/16"
- TORX® Bits: T15, T20, T25, T30,
- Square Bits: #1, #2, Hex Bits: 1/8", 5/32", 3/16", 1/4"
- Nut Drivers: 1/4", 5/16", 7/16"
- Ratcheting handle with bit storage



## 8 Piece T-Handle Hex Key Set - SAE

- T-handle hex key set for improved torque and control
- Ergonomic soft-grip handles

**Available in:**

- SAE sizes: 5/64" to 3/8"



## 8 Piece T-Handle Hex Key Set - Metric

- T-handle hex key set for metric fasteners
- Chrome vanadium steel construction

**Available in:**

- Metric sizes: 2 mm to 10 mm



## Long Arm Ball Point Hex Key Set

- Long arm hex keys with ball-point entry
- Allows angled access up to 25°

**Available in:**

- SAE: 0.05", 1/16", 5/64", 3/32", 7/64", 1/8", 9/64", 5/32", 3/16", 7/32", 1/4", 5/16", 3/8"
- Metric: 1.5, 2, 2.5, 3, 4, 4.5, 5, 5.5, 6, 7, 8, 10 mm



## Steel Staple Gun / Hammer Tacker

- All-steel staple gun and hammer tacker
- Bottom-loading magazine design

**Features:**

- Durable steel construction
- Ergonomic handle grip



## Flex Ratcheting Wrench Set

- Flex-head ratcheting box wrenches
- 72-tooth ratcheting action

### Available in:

- SAE: 1/4", 5/16", 3/8", 7/16", 1/2", 9/16", 5/8", 11/16", 3/4"
- Metric: 8, 9, 10, 11, 12, 13, 14, 15, 16, 17, 18, 19 mm



## Combination Wrenches

- Combination wrench sets manufactured to ANSI / DIN standards
- Chrome vanadium steel, heat treated

### Available in:

- Imperial sizes: 1/4" to 1-1/2"
- Metric sizes: 8 mm to 22 mm



## Hammers - Framing / Claw / Curved / Ball Peen / Drywall

- Assorted forged hammers for construction and shop use
- Medium carbon steel heads

### Available in:

- 12 oz, 16 oz, 20 oz, 21 oz options



## 3lb One Piece Forged Club Hammer

- One-piece forged club hammer
- Polished striking face

### Features:

- Reduced vibration design
- Double injection grip handle



## 16oz Rubber Mallet

- Rubber mallet for non-marring strikes
- Natural hickory handle



## 20 Piece Slotted Drive Bits

- Slotted drive bits set
- Durable plastic storage case

### Features:

- S2 steel construction
- Slotted Size: 4F-5R X 1" to 20F-22R X 1-1/4"



## Phillips Drive Bits

- Phillips drive bits in multiple lengths and sizes
- Heat treated modified steel

### Available in:

- S2 steel construction
- Phillips size ranges: PH1 X 1" to PH3 X 2"



## 25'/8M Tape Measure

- Dual scale tape measure (imperial + metric)
- Impact-resistant housing

### Features:

- Magnetic tip
- Nylon coated blade
- Framing marks and stud indicators



## Retractable Utility Knife 6"

- Quick-release blade change system
- Integrated blade storage dispenser

### Includes:

- Carbon Steel Utility knife with TPR Grip
- SK2 high-carbon steel blade storage and dispenser holds up to 5 additional blades



## Hacksaw Frame 12"

- Adjustable tension hacksaw frame
- Quick-release blade change

### Features:

- Multi-angle cutting positions
- Ergonomic grip



## Hacksaw Blade

- Bi-metal hacksaw blades
- Designed for metal cutting

### Features:

- 24T blade pattern
- Cuts material 3.2 mm - 6.4 mm, 1/8"-1/4"
- Suitable for conduit and sheet metal



## Hand & Tool Wipes - Canister

- Heavy-duty cleaning wipes for hands and tools
- Dual-surface textured wipes

### Features:

- Cuts grease, oil, grime, lubricants
- No water required



## Shop Towels

- High-absorbency shop towels
- Suitable for tool and surface cleaning

### Features:

- Large format towels
- Designed for grease and oil cleanup





---

Mechanical and technical solutions for petrochemical, industrial, and manufacturing applications, supported by specialised equipment and experienced technical teams.

#### Capabilities:

- Bolt torquing and tensioning
- Cold pipe cutting and on-site machining
- Hydro-testing and flange management
- Joint integrity and quality control

#### Solutions Include:

- Enerpac tooling
- On-site machining and pipe preparation
- Torque tools and Norbar torque systems
- Snap-on tools and equipment
- Engineered connection systems
- VideoRaySubsea inspection systems
- Pipeline remediation solutions

## Cylinders & Jacks

- Hydraulic cylinders, jacks, and rams for lifting, pushing, pulling, bending, and holding applications
- Suitable for industrial and commercial work environments
- Wide range of configurations for general and specialised use
- Portable jacks for confined spaces and tight access
- Engineered lifting systems for controlled, multi-point operations



## High Pressure Hydraulic Pumps

- High pressure hydraulic pumps designed for force application across industrial operations
- Suitable for use with hydraulic tools and system components
- Includes manual, battery, electric, air, and gas-powered pump options
- Designed for reliable performance, durability, and safe operation



## Torque and Tension Tools

- Controlled bolting tools for joint integrity across industrial applications
- Suitable for a range of tightening and tensioning requirements
- Includes torque multipliers, torque wrenches, and bolt tensioning systems
- Available in manual, pneumatic, electric, and hydraulic options
- Designed for accurate, controlled fastening and critical joint applications



# ENERPAC TOOLING

## Equalizer Flange Tools

- Hydraulic and mechanical tools for industrial flange maintenance applications
- Suitable for a range of maintenance and repair requirements
- Includes flange spreaders, nut splitters, alignment tools, flange pullers, and valve change-out sets
- Designed for safe, reliable operation in critical maintenance environments



## Flange Spreader Tools

- Mechanical and hydraulic tools for separating flange joints
- Suitable for small, medium, and large flange applications
- Designed for use across a range of maintenance and repair tasks
- Selection based on access gap, flange size, and application requirements



## Clamshell Cutters

- Portable split frame machine for large diameter, heavy wall pipe applications
- Suitable for pipe cutting, bevelling, facing, ID boring, and OD turning
- Designed to handle a wide range of pipe sizes and wall thicknesses
- Robust construction for demanding industrial environments



## Cold Pipe Cutting & Bevelling

- Cold cutting solutions for safe pipe preparation
- Eliminates the need for hot work



## Facing and End Prepping Machines

- Used to prepare pipe ends and flange faces for mechanical connectors or welding
- Ensures accurate alignment and sealing surfaces



Precision tools and equipment designed for controlled tightening, accurate torque application, and industrial maintenance operations.

Includes:

- Torque tools and multipliers
- Hydraulic torque wrenches and bolt tensioners
- Accessories and calibration support



## Need help selecting the right tool for your application?

Our team can advise on torque requirements, accuracy standards, and tool selection.

# TORQUE TOOLS

## Enerpac Bolting Solutions

### Hydraulic Torque Wrenches

- High-pressure hydraulic tools designed for controlled bolting
- Used in critical joint tightening applications

#### Applications:

- Oil & gas
- Industrial maintenance
- Power generation



### Hydraulic Bolt Tensioners

- Applies precise tension directly to the bolt
- Eliminates torsional stress during tightening

#### Applications:

- Critical flange connections
- High-load bolting applications



# NORBAR TORQUE SOLUTIONS

## Norbar Torque Tools

### Torque Screwdrivers

- Designed for accurate torque application in low-torque assemblies
- Engineered for comfort, consistency, and repeatability

#### Features:

- Supplied with Declaration of Conformance
- Compliant with ISO 6789-1:2017 standards



### Torque Wrenches

- Designed for controlled tightening across a wide torque range
- Suitable for industrial, mechanical, and maintenance applications

#### Features:

- Torque range from 1 N·m to 2000 N·m
- Manufactured to meet international accuracy standards



### Manual Torque Multipliers

- Gear-driven tools for achieving high torque values safely
- Reduces operator effort during tightening

#### Features:

- Torque multiplication accuracy of  $\pm 4\%$
- Precision-engineered gearboxes



# NORBAR TORQUE SOLUTIONS

## Norbar Torque Tools

### Pneumatic Torque Multipliers

- Air-powered tools designed for repetitive high-torque applications
- Reduces operator fatigue while maintaining torque accuracy

#### Features:

- Suitable for production and maintenance environments
- Consistent torque output with controlled operation



### Electronic Torque Multipliers

- Digitally controlled torque tools for precision tightening
- Provides real-time torque feedback and data

#### Features:

- Torque range from 1 N·m to 2000 N·m
- Manufactured to meet international accuracy standards



### Battery Operated Torque Guns (Norbar EBT Series)

Battery-operated torque tools designed for accurate, controlled tightening in industrial applications.

#### Includes:

- EBT-C-1100, EBT-1350-AUT BLE, EBT-4000-AUT BLE

#### Key Features:

- Torque accuracy of  $\pm 3\%$
- Cordless operation for improved mobility
- Bluetooth and USB connectivity for data and diagnostics
- Thermal management for continuous operation
- Suitable for high-torque applications
- Data logging and job tracking capability

#### Supplied With:

- Rechargeable batteries and charger
- Carry case
- Calibration certificate



# SNAP-ON TOOLS

Professional-grade hand tools, power tools, and tool storage systems for automotive and industrial applications.

Includes:

- Cordless and pneumatic power tools
- Hand tools for maintenance and repair
- Tool storage and organisation systems available on request



## Need help selecting the right tool for the job?

Our team can advise based on application, access requirements, and performance needs.

## Snap-on Tools

### 18V 3/4" Drive Impact Wrench Kit (CT9175K2)

- 1,250 ft-lb torque output; 1,550 ft-lb breakaway torque
- Three torque settings for multiple applications
- Brushless motor for durability and run time
- Variable-speed trigger for control
- Integrated LED work light
- Ergonomic design with cushion grip

#### Includes:

- Tool, (2) batteries, charger



### 18V 1/2" Drive Cordless Drill Kit (CDR9015K2)

- 470 in-lb torque output
- Two-speed gearbox (420 / 2,000 RPM)
- Keyless 1/2" metal chuck
- 18 clutch settings for application control
- Brushless motor for durability
- Variable-speed trigger and LED light

#### Includes:

- Tool, (2) batteries, charger



# SNAP-ON TOOLS

## 14.4V 1/4" Hex Toggle Screwdriver Kit (CTS861MK2)

- 200 in-lb torque output
- Two-speed gearbox (450 / 1,550 RPM)
- Nine-position clutch for torque control
- Manual spindle lock
- LED work light and battery indicator
- Compact, durable housing



### Includes:

- Tool, (2) batteries, charger

## 14.4V Right Angle Mini Drill Kit (CDRR2005K2)

- Compact 90° head for tight access
- Low runout for precision drilling
- Accepts 1/4"-28 threaded accessories
- LED light and battery indicator
- Durable geared construction



### Includes:

- Tool, (2) batteries, charger

## 18V Reciprocating Saw Kit (CTRS8850AK1)

- 2,400 strokes per minute
- Variable-speed trigger for control
- Tool-free blade change system
- Anti-vibration grip for stability
- Sealed mechanism for durability



### Includes:

- Tool, battery, blades, charger

# CONNECTOR SUBSEA ENGINEERED SOLUTIONS

91

Engineered mechanical connection and on-site machining solutions for pipeline, process, and industrial applications.

Includes:

- Mechanical pipe connectors
- Topside and subsea connection systems
- On-site machining and pipe preparation equipment



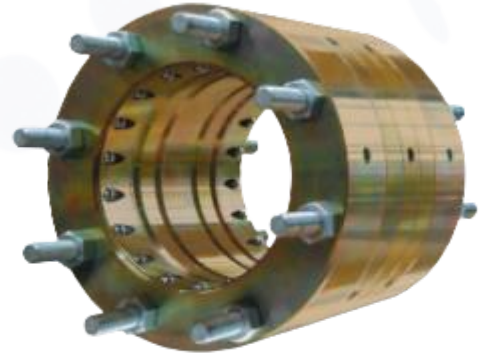
**Need an engineered connection or machining solution?**

Our team can advise based on system requirements, operating conditions, and project scope.

# CONNECTOR SUB-SEA ENGINEERED SOLUTIONS

## Mechanical Connectors

- Non-welded mechanical connectors for pipe repair and connection
- Suitable for permanent or temporary pipeline applications



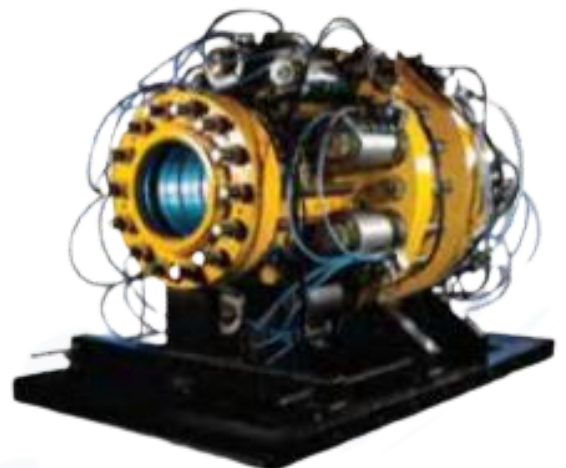
## Topside Connectors

- Designed for above-ground pipeline systems
- Used in oil & gas, industrial, and process applications



## Subsea Connectors

- Engineered for underwater pipeline repair and connection
- Designed to perform in harsh subsea environments



# MORGRIP SUBSEA ENGINEERED SOLUTIONS

Subsea mechanical connector and clamp systems designed for pipeline repair and connection in deep water environments.

## Includes:

- Morgrip subsea connectors
- Morgrip clamp systems

## Features:

- DNV type-approved pipeline repair solutions
- Suitable for deep water applications
- Diver-less or diver-assisted installation
- High-performance structural repair capability

## Applications

- Subsea pipeline repair
- Structural connection and reinforcement
- Offshore and energy sector operations



# CONNECTOR SUBSEA ENGINEERED SOLUTIONS

91

Engineered mechanical connection and on-site machining solutions for pipeline, process, and industrial applications.

Includes:

- Mechanical pipe connectors
- Topside and subsea connection systems
- On-site machining and pipe preparation equipment



**Need an engineered connection or machining solution?**

Our team can advise based on system requirements, operating conditions, and project scope.

# VIDEORAY UNDERWATER ROBOTIC SYSTEMS <sup>95</sup>

Compact underwater robotic systems designed for inspection, monitoring, and intervention in challenging subsea environments.

## Includes:

- Remotely operated underwater vehicles (ROVs)
- Subsea inspection and monitoring systems
- Portable underwater robotic solutions

## Applications

- Subsea inspection and maintenance
- Infrastructure and asset monitoring
- Offshore and industrial operations



Mission Specialist Pro 5



Mission Specialist Defender



Mission Specialist Ally



Mission Specialist Wraith

## Ideal Energy

Pipeline remediation and production maintenance solutions designed to optimise flow, remove blockages, and extend asset life across oil and gas operations.

### **Includes:**

- PipeRenew pipeline flow optimisation solutions
- WellRenew production optimisation solutions

### **Features:**

- Chemical treatment solutions for pipeline and production
- Restores flow by removing blockages and build-up
- Helps prevent future restrictions and downtime
- Supports production efficiency and system longevity
- Suitable for midstream and upstream applications

### **Applications:**

- Pipeline flow optimisation
- Production maintenance and recovery
- Oil and gas processing systems





## Industrial Fasteners • Sealing Systems • Tools • Engineered Solutions

---

Product specifications, sizes, and availability are subject to change without notice. Images are for reference only.

**For technical support and product enquiries, contact our team.**

12-20 St. Joseph Rd., **San Fernando** (868) 225-4440  
Coral Cove Marina, **Chaguaramas** (868) 220-3212  
Lots #20-21, St. Ann's Village, **Mayaro** (868) 221-3681

**Email:** [industrial@dumore.co](mailto:industrial@dumore.co) **Website:** <http://dumore.co>

---



Oilfield & Industrial Supplies  
(868) 225-4440



Transport Division  
(868) 225-5555



Rentals Division  
(868) 225-5555



DutorX Division  
(868) 225-7816