



# Uptime Solutions You Can Count On

Fast, Reliable Parts & Services

---

The Go-To Experts

# Uptime Solutions You Can Count On

At Radwell, we deliver unparalleled equipment, expertise, technology, and service to support your operations. Your experience and satisfaction are at the heart of everything we do. Our mission is to shape a brighter future for industry by prioritizing your needs and ensuring your success. With our global reach, we offer tailored solutions to meet your specific requirements, providing the support and service you need.

We optimize the industrial supply chain with **tech-driven sourcing, repairs, and automation solutions** – reducing downtime, cutting costs, and driving sustainability.

## Why Choose Radwell?

- ✓ Over 90 Locations Worldwide
- ✓ Free Repair Assessment and Pick-Up
- ✓ Authorized Distributor for Top Brands
- ✓ Emergency Service Offerings
- ✓ Asset LifeCycle Analytics & Maintenance
- ✓ Dedicated Account Managers



Established  
**1979**



Engineers/Technicians  
**350+**



Value of Stock  
**\$2+BILLION**



Authorized Lines  
**450+**



SKUs ready to ship  
**2+MILLION**



Locations  
**90+**



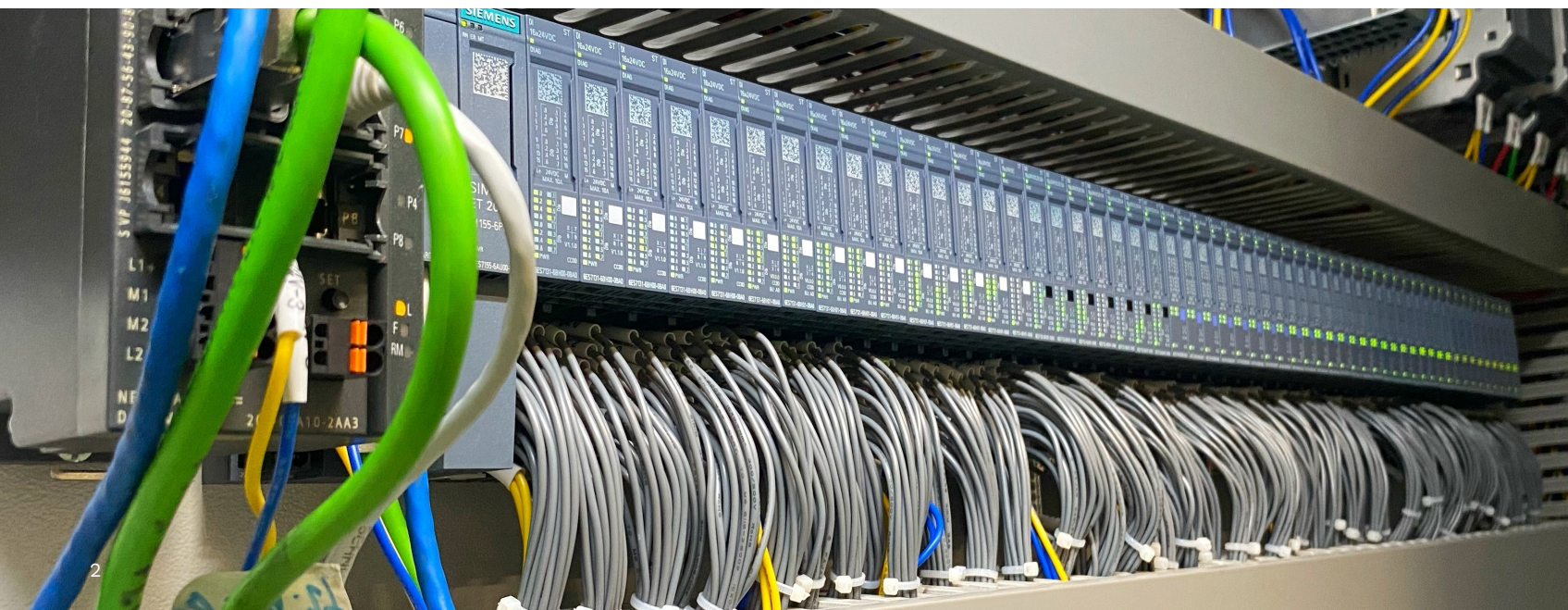
Countries shipped  
**100+**



SKUs available  
**20+MILLION**



9001:2015  
**ISO Certified**





# Diverse Product Selection

## New & Never Used



Radwell offers a comprehensive selection of factory OEM components across a broad range of categories, ensuring top-tier quality and fast delivery. With products sourced from top manufacturers, Radwell is your trusted partner to ensure reliability and quality for all your industrial automation needs.

## Surplus



Radwell's surplus inventory includes high-quality, cost-effective PLCs, HMIs, motors, drives, and electrical components. Carefully sourced and inspected, these products are ideal for maintaining or upgrading systems with both discontinued and current parts.

### Surplus Obsolete:

Extend the life of legacy systems by sourcing hard-to-find, discontinued parts.

## Obsolete & Refurbished



We specialize in hard-to-find obsolete products, delivering solutions that keep legacy automation and electronic equipment operational. By helping businesses extend the life of their existing machinery and avoid costly upgrades, Radwell remains a trusted partner for industries that depend on reliable, long-lasting systems.

### Surplus Non-Obsolete:

Access like-new, in-stock current parts at competitive prices with industry-leading lead times.

## Popular Manufacturers

- ABB / BALDOR
- ALLEN-BRADLEY
- AMETEK
- AUTOMATION DIRECT
- B&R AUTOMATION
- BANNER ENGINEERING
- BECKHOFF AUTOMATION
- BOSCH-REXROTH
- DANFOSS
- EATON
- EMERSON
- FANUC
- FESTO
- FUJI ELECTRIC
- GE
- HONEYWELL
- HUBBELL
- IDEC
- IFM EFECTOR
- JOHNSON CONTROLS
- KEYENCE
- KOLLMORGEN
- LENZE
- MAC VALVES
- MITSUBISHI ELECTRIC AUTOMATION
- MURRELEKTRONIK
- NIDEC CONTROL TECHNIQUES
- NUMATICS
- OMRON
- PARKER
- PENTAIR
- RED LION
- SCHNEIDER ELECTRIC
- SICK
- SIEMENS
- TOSHIBA
- TURCK
- UNITRONICS
- WAGO

# We Deliver Value Across Multiple Industries



Agriculture



Life Science / Medical



Power Generation



Asphalt / Chemical Manufacturing



Machine Tool



Pulp, Paper, & Printing



Automotive



Material Handling



Renewable Energy



Construction



Mining



Rail



Data Centers



Oil & Gas



Steel



Distribution



Packaging & Handling



Tire Manufacturing



Food & Beverage



Pharmaceutical



Universities



Government



Plastics



Water/Wastewater



## 2 YEAR WARRANTY

"The product was exactly as described, super easy to order, great updates on shipping, packed with care, and arrived faster than expected!"



# Expert Repair Solutions That Minimize Downtime

## Fast, Reliable, Expert Repairs

Radwell's repair services are designed to get your equipment back up and running fast. With state-of-the-art test rigs and a team of skilled technicians, we're equipped to handle a wide range of industrial automation repairs.

- ✓ Drives
- ✓ HMI's
- ✓ PLCs
- ✓ PCBs
- ✓ And Much More!
- ✓ Servo Drives
- ✓ Servo Motors
- ✓ Controls
- ✓ Robotics

## Our Repairs Are Guaranteed

All our repair solutions come with a 2-year warranty, with the option to extend to 3 years for additional premium coverage. Through our multi-award-winning industrial automation expertise, Radwell delivers reliable repair solutions every day.

Our customer-focused teams ensure you receive quality support at every step, providing lasting confidence in the performance of our repaired products.

## The Repair Process



### STEP 1

Describe Your Problem



### STEP 2

Print a Packing List From Us



### STEP 3

Ship To Us For Free Repair Evaluation



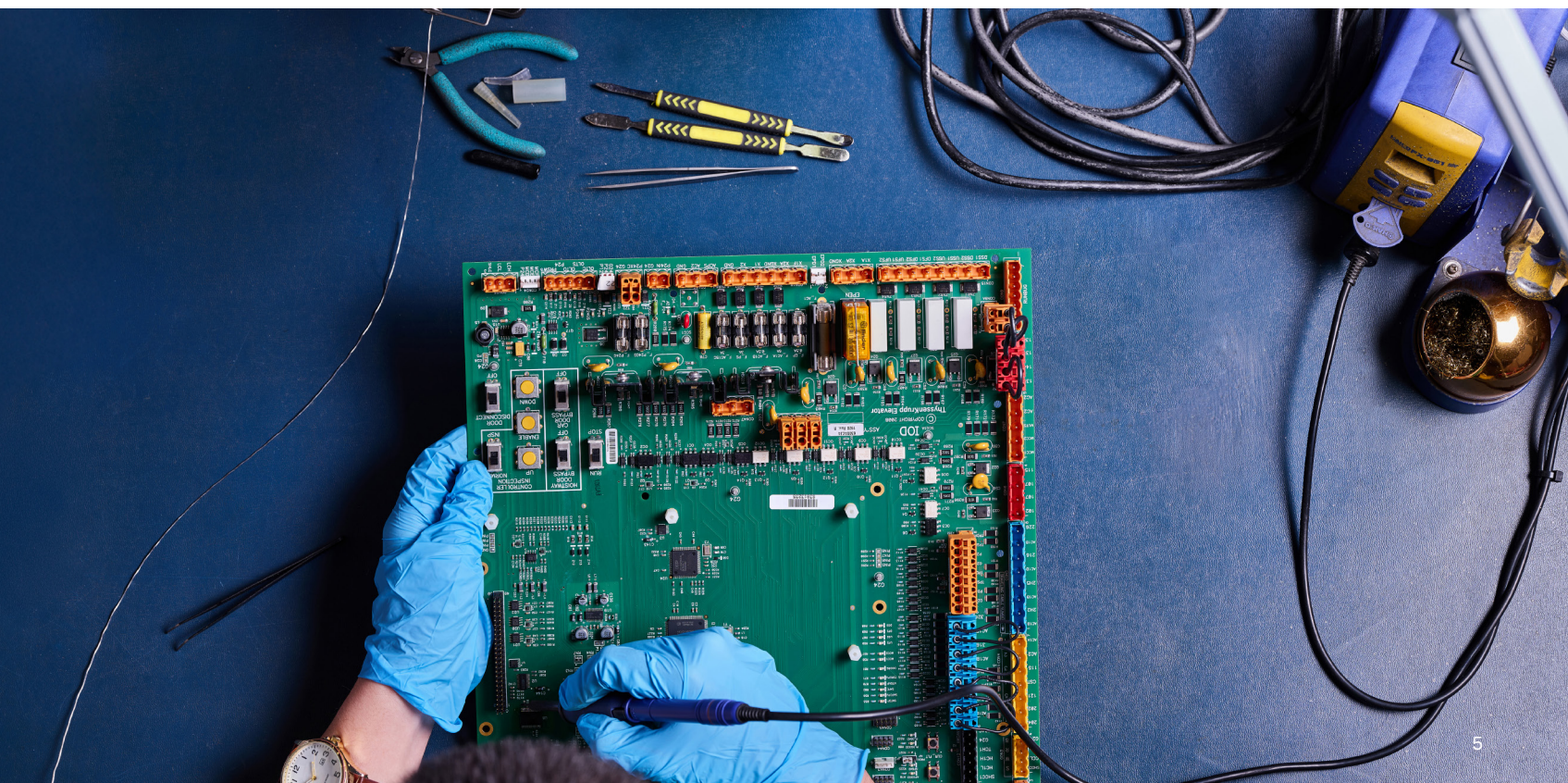
### STEP 4

Approve the Price, Timelines & Pay



### STEP 5

Receive Your Repaired Item



# Our Capabilities

## Asset LifeCycle Analytics (ALA)

[Proactive Equipment Assessments](#) to identify obsolescence risks before they impact your operations.

[Customized Solutions](#) including upgrades, replacements, and alternatives for long-term reliability.

[Real-time Visibility](#) through virtual dashboards to monitor performance and optimize factory uptime.

[Obsolescence-Tracking](#) algorithms monitor manufacturer life cycles to proactively optimize inventory.

[Custom Savings Report](#) delivered quarterly or annually to demonstrate tangible value.

## Technology-Enabled Sourcing

[Data-powered Parts Finder](#) delivers the lowest-cost, fastest-available options using real-time insights.

[Extensive Supplier Network](#) and surplus inventory provide access to rare and discontinued components.

[Robust Digital Platform](#) enables real-time inventory visibility, instant quotes, and frictionless online ordering.

[PunchOut Integration](#) links our catalog with leading eProcurement systems such as Ariba and Coupa for a seamless buying experience.

## Sell Us Your Parts

Radwell's Sell Us Your Parts Program makes it easy to turn surplus parts into cash. We cover shipping, freeing up storage space and unlocking tied-up capital with hassle-free, tailored solutions. Quick, efficient, and easy.

- ✓ Removes outdated excess or slow-moving stock.
- ✓ Frees up valuable storage space.
- ✓ Provides a more sustainable solution than disposal.
- ✓ Increases cash flow through quick asset liquidation.

## Robotics at Radwell

Radwell delivers fast response, expert support, and reliable sourcing to minimize downtime. With deep OEM expertise, our team provides smart solutions every time.

- ✓ Refurbished "Integrator Ready" Robots
- ✓ Preventative Maintenance Programs
- ✓ Comprehensive After-Service Support
- ✓ Automation & Electrical Parts Supply
- ✓ Line Startup & Emergency Support  
Robot Refurbishment Program

## Radwell Verified Substitutes (RVS)

[Fit, Form, Function Alternatives](#) to popular OEM products that meet or exceed factory specifications, providing substantial cost savings.

- ✓ Fast Reliable Availability
- ✓ OEM-Equivalent Performance
- ✓ Rigorous Testing & Quality Assurance
- ✓ Obsolescence & Custom Solutions
- ✓ Market-Leading Warranty Protection
- ✓ Expanding Product Availability

## eProcurement

[Our PunchOut Solution and API Ordering Solutions](#) improve order accuracy with real-time product availability and up-to-date pricing that saves you time, reduces errors, and keeps your operations running smoothly.

- ✓ Real-Time Pricing & Stock Visibility
- ✓ Customer-Specific Discounts
- ✓ Integrated Repair Services
- ✓ Enhanced Product Insights & Images
- ✓ Quote-Free Purchasing
- ✓ Seamless Customer Experience



# Maximize Uptime Minimize Cost



## Increase Operational Uptime & Reliability

We minimize downtime with same-day shipping on a vast inventory of new, surplus, and refurbished parts, alongside emergency repair services – ensuring seamless operations and business continuity.



## Access Obsolete & Hard-To-Find Parts

We source and supply hard-to-find and discontinued components by leveraging a [global sourcing network](#), providing businesses with reliable solutions to maintain legacy systems.



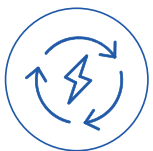
## Unlock Innovative Cost Optimization

We minimize operating expenses, help avoid costly OEM upgrades through automated procurement technology and a global vendor network, streamlining sourcing, reducing administrative burden, and ensuring the lowest total MRO cost.



## Extend Equipment LifeCycle

We extend the lifespan of our customers' equipment by providing cost-effective alternatives, including verified substitutes, reducing capital expenditures while promoting sustainability and circularity.



## Advance Sustainable Procurement Practices

We drive sustainability and circularity by leveraging asset recovery, surplus sourcing, and refurbishment to reduce waste, and build a more resilient and sustainable industrial supply chain.



800.884.5500



[radwell.com](https://radwell.com)

## Get In Touch With a Sales Rep Today

From PLCs and sensors to robotics and repair services, Radwell has the parts and expertise to minimize downtime and maximize productivity.

# Over 90 Locations Worldwide

Global Reach, Local Expertise



**Uptime Solutions You Can Count On**

800.884.5500  
**radwell.com**

© 2025 Radwell International, LLC. All rights reserved. Radwell sells new and surplus products and develops channels to purchase such product. Radwell may not be affiliated with or an authorized distributor or representative of every manufacturer, brand or product listed. Trademarks appearing herein are the property of their respective owners.

