

GEBUWIN WINCHES

QUALITY HAND WINCHES AND SWIVEL DAVIT CRANES



E-mail

sales@nos-as.dk

Phone

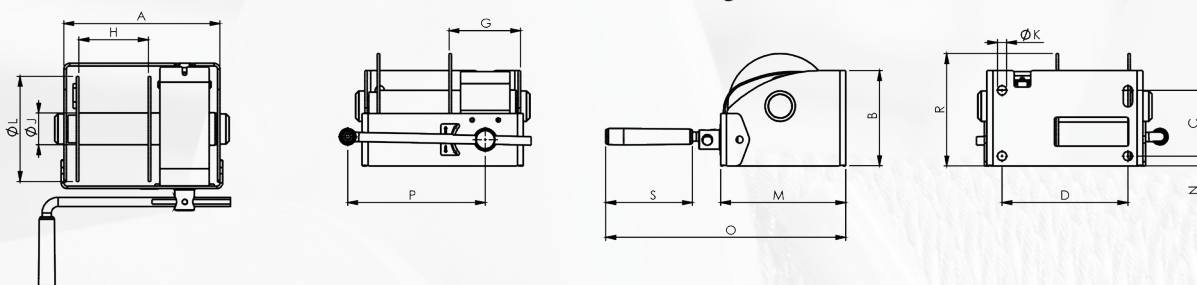
+45 7669 7070

Address

Overholm 7, 8700 Horsens

Worm Gear Winches - WW250 - 1500

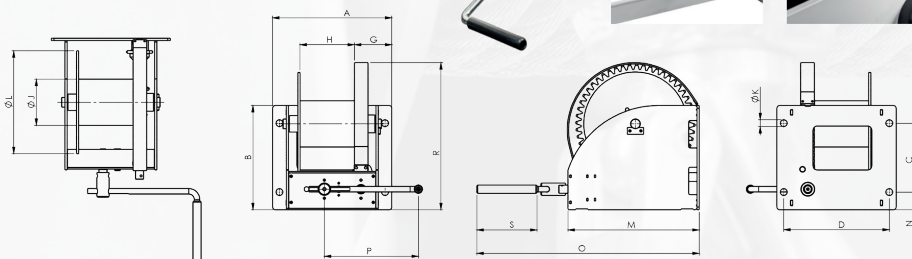
- Hand winch 250 - 1500 kg
- Lifting and pulling winch in compliance with EN13157
- Load pressure brake with double ratchet system
- Suitable for wall and floor mounting
- Approved for lifting and pulling
- Large rope capacity
- Safety factor 4



| Model | Max. Load capacity 1st layer (kg) | Rope dia. (mm) | Dimensions (mm) | | | | | | | | | | | | | | | Weight (kg) |
|--------|-----------------------------------|----------------|-----------------|-----|-----|-----|-----|-----|-----|----|-----|-----|----|-----|-----|-----|-----|-------------|
| | | | A | B | C | D | G | H | J | K | L | M | N | O | P | R | S | |
| WW250 | 250 | 4 | 238 | 145 | 100 | 192 | 107 | 105 | 48 | 14 | 160 | 191 | 15 | 365 | 325 | 171 | 132 | 10 |
| WW500 | 500 | 6 | 269 | 160 | 115 | 223 | 108 | 135 | 70 | 14 | 190 | 221 | 15 | 393 | 325 | 193 | 132 | 13 |
| WW1000 | 1000 | 8 | 302 | 195 | 141 | 254 | 109 | 162 | 102 | 17 | 240 | 266 | 15 | 440 | 350 | 263 | 132 | 22 |
| WW1500 | 1500 | 10 | 302 | 250 | 178 | 254 | 109 | 162 | 102 | 17 | 240 | 178 | 15 | 451 | 350 | 306 | 132 | 24 |

Worm Gear Winch - WW2000-7500

- Hand winch 2000 - 7500 kg
- Lifting and pulling winch in compliance with EN13157
- Load pressure brake with double ratchet system
- Suitable for wall and floor mounting
- Approved for lifting and pulling
- 2 lifting speeds
- Large rope capacity
- Safety factor 4



| Model | Max. Load capacity 1st layer (kg) | Rope dia. (mm) | Dimensions (mm) | | | | | | | | | | | | | | | Weight (kg) |
|--------|-----------------------------------|----------------|-----------------|-----|-----|-----|-----|-----|-----|----|-----|-----|----|-----|-----|-----|-----|-------------|
| | | | A | B | C | D | G | H | J | K | L | M | N | O | P | R | S | |
| WW2000 | 2000 | 12 | 410 | 310 | 196 | 360 | 137 | 177 | 133 | 25 | 312 | 372 | 57 | 705 | 380 | 434 | 220 | 60 |
| WW2500 | 2500 | 12 | 410 | 310 | 196 | 360 | 137 | 177 | 133 | 25 | 312 | 372 | 57 | 705 | 380 | 434 | 220 | 60 |
| WW3000 | 3000 | 14 | 436 | 380 | 251 | 386 | 137 | 203 | 168 | 25 | 375 | 480 | 65 | 813 | 380 | 536 | 220 | 78 |
| WW4000 | 4000 | 16 | 436 | 380 | 251 | 386 | 137 | 203 | 168 | 25 | 375 | 480 | 65 | 813 | 380 | 536 | 220 | 80 |
| WW5000 | 5000 | 18 | 436 | 467 | 316 | 386 | 137 | 200 | 219 | 25 | 437 | 515 | 75 | 847 | 380 | 618 | 220 | 117 |
| WW7500 | 7500 | 22 | 510 | 500 | 350 | 455 | 189 | 202 | 245 | 25 | 630 | 635 | 75 | 968 | 380 | 748 | 220 | 190 |



Spur Gear Winches TL150-1500

- Hand winch 150 - 1500 kg
- Winch in compliance with EN13157
- Very compact and lightweight
- Maintenance free bearings
- Simple and quick attachment
- Suitable for wall mounting
- Approved for lifting and pulling
- Cable outlet upwards
- Ideal for small jobs
- Safety factor 4



TL150



TL300 & TL600



TL1000 & TL1500

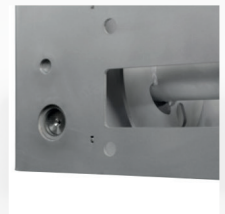
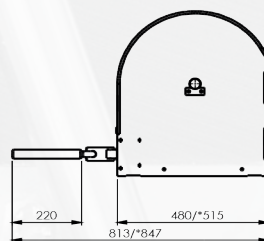
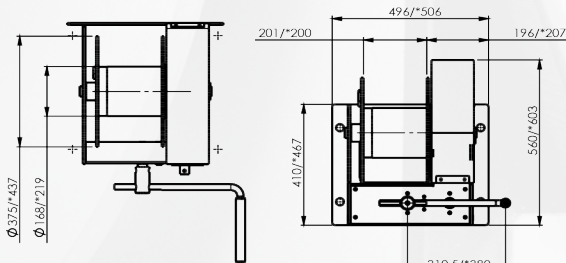
| Model | Max. Load capacity 1st layer (kg) | Rope dia. (mm) | Weight (kg) |
|--------|-----------------------------------|----------------|-------------|
| TL150 | 150 | 4 | 4 |
| TL300 | 300 | 4 | 10 |
| TL600 | 600 | 6 | 11 |
| TL1000 | 1000 | 8 | 27 |
| TL1500 | 1500 | 10 | 27.5 |

Marine Winches MR500-5000

- Stainless steel hand winch 500 - 5000 kg
- Lifting and pulling winch in compliance with EN13157
- Load pressure brake with double ratchet system
- Maintenance free bearings
- Suitable for wall and floor mounting
- Approved for lifting and pulling
- 2 lifting speeds
- Large rope capacity
- Safety factor 4



MR3000-5000



| Model | Max. Load capacity 1st layer (kg) | Rope dia. (mm) | Weight (kg) |
|--------|-----------------------------------|----------------|-------------|
| MR500 | 500 | 8 | 16 |
| MR1500 | 1500 | 12 | 30 |
| MR3000 | 3000 | 16 | 104 |
| MR5000 | 5000 | 20 | 135 |



Swivel Davit Crane

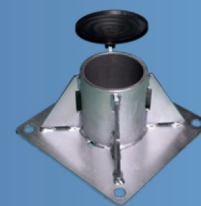
- User-friendly crane
- Crane in compliance with EN13157
- Incl. 8 meter wire rope with hook
- Possible to rotate 360°
- Easy to transport
- Maintenance free
- Quickly ready for use



Swivel Davit Crane SST

- User-friendly stainless steel crane
- Full stainless steel grade 316 body
- Crane in compliance with EN13157
- Incl. 8 meter stainless steel wire rope with hook
- Possible to rotate 360°
- Easy to transport
- Maintenance free
- Quickly ready for use

| Model | Max. Load capacity 1st layer (kg) | Rope dia. (mm) | Lift per crank rotation (mm) | Swivel Davit Weight (kg) | Floor socket Weight (kg) |
|-------|-----------------------------------|----------------|------------------------------|--------------------------|--------------------------|
| SD125 | 125 | 4 | 20 | 30 | 8.9 |
| SD250 | 250 | 4 | 20 | 30 | 8.9 |
| SD500 | 500 | 5 | 20 | 30 | 8.9 |



Accessoires

- Floor and wall sockets
- Carry bag and protection cover

NOS A/S

A GRENE WIS COMPANY

Overholm 7, DK 8700 Horsens

E-mail: sales@nos-as.dk

Phone: +45 7669 7070