

PERKO, INC.

19" SEARCHLIGHTS – 1900 SERIES

All Aluminum – White Perko-Kote Finish 32V, 120V, or 230V

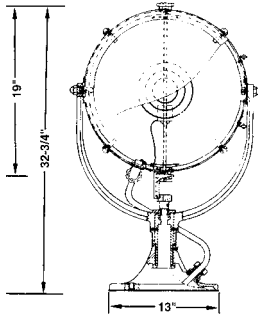


Fig. 1902



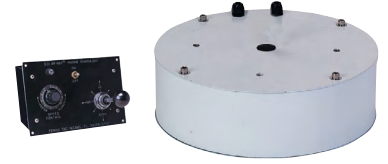
Lever/Gear Control



Wheel Control



Deck Control



Distant Electric Control Base

**SEARCHLIGHT HEAD AND CONTROL ASSEMBLIES**

Description	Catalog No.
Deck Control Searchlight Head Assembly*	1901004WHT
Wheel or Lever/Gear Control Searchlight Head Assembly (Requires Control Assembly Below)	1902004WHT
Searchlight Head Assembly For Distant Electric Control Base	1902DE4WHT
Wheel Control Assembly (For Above)	1922000WHT
Lever/Gear Control Assembly (For Above)	1921000WHT
Distant Electric Control Base	1925000WHT

* Can Not Be Fitted With Controls.

Custom Control Lengths and Pedestal Heights are Available. Specify Measurements.

ELECTRIC SOCKET AND SUPPORT STAND ASSEMBLIES

Searchlights include a socket and support stand based on the bulb or socket information given when ordering. The following chart makes it possible to order and stock different assemblies for field conversion, to meet a large variety of voltage and candlepower requirements with a minimum of inventory.

Socket Type	Socket Code	Socket & Stand Catalog Number	Height Stand Inches
Medium Screw	B	0872004	5-3/4
Medium Prefocus	E	0873004	5-7/16
Mogul Prefocus (1500W)	L	1930004	3-5/8
Mogul Prefocus (1000W & 2000W)	M	1931004	3-1/8
2-Pin Prefocus (900W)	K	0880004	7-5/16

BULB ORDERING INFORMATION (Bulbs are not included in lights)

To give good results, the bulb and reflector must be perfectly compatible; therefore be sure to specify the catalog number of the bulb desired. Peak candlepower is exceedingly sensitive to many factors, (i.e., a light source out of focus by 1/32", under-voltage of only 4%, or differences between

bulb manufacturers can cause a reduction of range of up to 20%). For a More Concentrated Beam, Longer Range, Brighter Light and a Longer Life, the manufacturer recommends the Quartz/Halogen Bulbs.

Voltage	Approx. Range Miles*	Bulb Catalog Number	Bulb Type	Socket Type	Socket Code Letter	Wattage	Rated Life Hours**	Maximum Candlepower Output	Horizontal Beam Spread Degrees	Vertical Beam Spread Degrees	Mfg. Bulb Code
32	1-2/3	0806	Incandescent	Medium Screw	B	500	50	3,520,000	3.5	3.7	DLT
120	1-3/8	0837	Incandescent	Medium Prefocus	E	750	200	2,076,000	3.6	4.2	DDY
120	1-5/8	0845	Quartz/Halogen	Medium Prefocus	E	750	200	2,871,000	3.6	5.4	BTP
120	1-5/8	0807	Incandescent	Medium Prefocus	E	500	25	3,191,000	3.5	4.0	CZX
120	1-2/3	0859	Quartz/Halogen	Mogul Prefocus	M	2000	250	3,633,000	9.4	5.9	BVW
120	1-2/3	0847	Quartz/Halogen	Mogul Prefocus	M	1000	200	3,659,000	4.5	5.4	BVV
120	1-3/4	0844	Quartz/Halogen	Medium Prefocus	E	500	100	4,212,000	3.0	5.4	BTM
120	1-3/4	0809	Incandescent	Medium Prefocus	E	750	25	4,454,000	3.6	4.5	DPJ
120	1-7/8	0846	Quartz/Halogen	Medium Prefocus	E	1000	200	4,601,000	4.5	5.4	BTR
120	2	0848	Quartz/Halogen	Mogul Prefocus	L	1500	100	5,596,000	5.9	5.7	DTA
120	2	0810	Incandescent	Medium Prefocus	E	1000	25	5,622,000	3.6	4.2	DRS
120	2	0839	Quartz/Halogen	2-Pin Prefocus	K	900	75	5,769,000	5.9	5.4	BVA
120	2-1/8	0840	Incandescent	Mogul Prefocus	L	1500	25	5,968,000	5.6	5.4	DRW
230	1-3/8	0860	Quartz/Halogen	Medium Prefocus	E	1000	950	2,162,000	7.9	6.5	FKD

* The approximate ranges listed above are based on photometric measurements of beam candlepower output under ideal conditions. Many factors such as atmospheric conditions, size and color of target, background, etc., may reduce effective range considerably; therefore, these figures are offered only as a guide to compare different bulb and voltage options.

** NOTE: These are the "Rated Average Laboratory Life in Hours" of the Bulb Manufacturer obtained in closely controlled laboratory life testing of groups of lamps at their design voltage. It is not necessarily the same as the service life where conditions such as shock, vibration, voltage fluctuation and environment may result in a shorter average attained life.



RELIABLE | SAFETY | PRODUCTS

TradeNet ID 71412

Alexander/Ryan Marine & Safety

2000 Wayside Drive • Houston, TX 77011 USA

Tel: +1 713 923 1671 • Toll Free: 1 800 923 1672

www.alexanderryan.com

SalesNola@alexanderryan.com