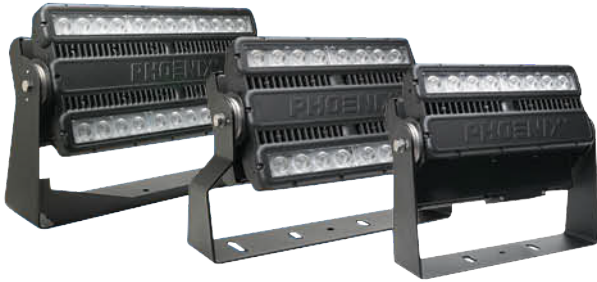


PHOENIX LIGHTING  
**HEAVY DUTY LED FLOODLIGHT – EcoMod® 2 Series**



420 Model

280 Model

140 Model

Introducing the next generation of the proven EcoMod® Series. Expertly engineered with durable, marine grade components and six optic options. Numerous bracket options. LED technology increases efficiency, eliminates maintenance and supports green initiatives.

**Compliances:**

ETL/cETL Certified to:

- UL 1598 Suitable for Wet Locations
- UL 1598A Marine Outside Type (Saltwater)
- CSA C22.2 No. 250.0 equivalent

CE

IP66

ABS

DLC (on select models)

**Dimensions:**

**140 Model** Length: 16.33" (415mm)  
 Height: 14.30" (363mm)  
 Width: 8.68" (220mm)

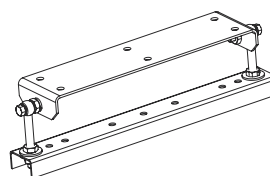
**280 Model** Length: 20.13" (511mm)  
 Height: 15.41" (391mm)  
 Width: 8.68" (220mm)

**420 Model** Length: 23.73" (603mm)  
 Height: 16.39" (416mm)  
 Width: 8.43" (214mm)

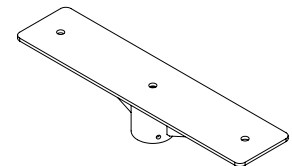
**Options and Accessories:**

DIM Dimmable (0-10V)  
 WW Warm white (2700K)  
 NW Neutral white (4000K)  
 TW Through wire  
 DLC 1 DLC certified  
 EM2-BMK Boom Mount Kit (for all fixtures)  
 PTM-MC2 2 3/4 inch Tenon Mount  
 (140 & 280 fixtures)  
 MCPTM 2 3/4 inch Tenon Mount (420 fixture)

Construction	Marine grade, powder coated cast aluminum housing Adjustable powder coated steel mounting harp
Finish	Black thermoset powder coat finish
Hardware	Marine grade (316) stainless steel
Lens	Clear, tempered glass
Light Source	Cree XHP light emitting diodes (LED) 140, up to 15,900 lumens 280, up to 31,800 lumens 420, up to 47,700 lumens CRI > 70 Cool white (5000K) - standard; neutral white (4000K) - optional; warm white (2700K) - optional 50,000 hour rated life
Power source	120-277V, 50-60Hz; 277-480V, 50-60Hz; replaceable Overload, over-voltage, over-temperature and short-circuit protection 0-10V dimming option (DIM)
Surge protection	4kV line to line; 2kV line to earth
Wiring	Stranded wires 17 gauge, 3 conductor cord - 72.00 inch (1829 mm) standard (CE and UL approved) Through wire optional (TW) (no cord provided) Standard cord grip 0.37 inch - 0.50 inch (9.5 mm - 12.7 mm)
Ambient operating temperature	-40°C to + 50°C Designed for use in areas allowing air flow
Humidity range	0% to 100%
Mounting	Harp rotation 360° Indexed aiming and lockable in 5° increments Boom mount kit (EM2-BMK)
Vibration	Meets requirements of ANSI C136.31-2010 Up to 6G for 100,000 cycles
Weight	140 Model - 23.2 lb (10.5 kg) 280 Model - 32.2 lb (14.6 kg) 420 Model - 54 lb (24.5 kg)
Safety cable	Included
Warranty	5 years



Boom Mount Kit  
EM2-BMK



2 3/4 inch Tenon Mount  
PTM-MC2  
MCPTM

**PHOENIX®**  
 DURABILITY X DESIGN™

**Phoenix Products Company Inc.**

8711 West Port Avenue, Milwaukee, WI 53224 USA

Phone: +1 414.973.3300 • Toll Free: 800.438.1214 • Fax: +1 414.973.3210

[www.phoenixlighting.com](http://www.phoenixlighting.com)