

PHOENIX PRODUCTS COMPANY INC.

## COMPACT LED AREA LIGHT – CUBE-LIGHT



The Cube-Light is a simple, yet durable 13W LED area light. The fixture's compact design makes it ideal for use along accessways and stairways, as well as in small spaces. It replaces up to 32W compact fluorescent vaporproof fixtures.

Construction	Cast aluminum housing
Finish	White thermoset powder coat
Hardware	Marine grade (316) stainless steel
Lens	Impact-resistant, diffuse polycarbonate Diffuse red, green, blue and amber lens accessories available (AMB-CL, BLU-CL, GRN-CL, RED-CL)
Light Source	13W, up to 1000 lumens Conformal coated CRI $\geq$ 70 CCT 5000K 50,000 hour rated life
Power source	120-240V, 50/60Hz 240V, 50/60Hz 13-27V DC
Wiring	Stranded wires Cord not included - standard 72.00 inch (1829 mm) cord with pigtail option (CD) NEMA 5-15 plug (120V only) sold separately (PLG-515)
Through wiring	Continuous row mounting option (TW)
Ambient operating temperature	-30°C to +50°C
Mounting	Flush mount brackets - standard Harp mount available Rail mount available - 2.00 inch overall diameter Fixture can be mounted in any orientation
Weight	2.0 lb (0.9 kg)
Warranty	3 years

### Compliances:

ETL/cETL Listed to:

- UL 1598 Suitable for Wet Locations
- UL 1598A Marine Outside Type (Saltwater)
- CSA C22.2 No. 250.0

CE

ABS

IP66 rated

LM79 and LM80 reports available

### Dimensions:

Width: 6.37" (163mm)

Depth: 4.60" (114mm)

Height: 4.26" (107mm)

### Options and Accessories:

120V – 120V, 50/60Hz (ETL/cETL listed)

240V – 240V, 50/60Hz (CE)

DC – 13-27VDC (no certifications)

CD – 72 inch (1829 mm) cord with pigtail option

TW – Continuous row mounting

HRP-CL – Harp Mount

RLMT-CL – Rail Mount

WG-CL – Wire Guard Kit

VSR-CL – Visor Kit

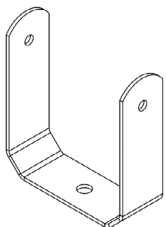
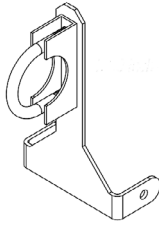
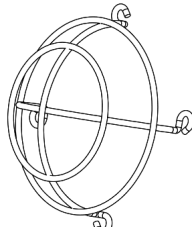
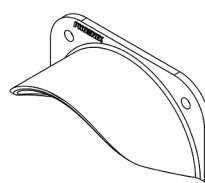
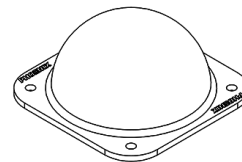
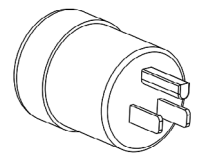
AMB-CL – Amber Lens Kit

BLU-CL – Blue Lens Kit

RED-CL – Red Lens Kit

GRN-CL – Green Lens Kit

PLG-515 – NEMA 5-15 plug (120V only) Accessory

Harp Mount  
HRP-CLRail Mount  
RLMT-CLWire Guard Kit  
WG-CLVisor Kit  
VSR-CLColor Lens Kit  
AMB-CL  
BLU-CL  
GRN-CL  
RED-CLNEMA 5-15 Plug  
(120V only)  
PLG-515

**PHOENIX**<sup>®</sup>  
DURABILITY X DESIGN™