



## Marine Bearings

**Kyodo USA is a leading supplier of marine bearings, bringing world class quality, reliability, and performance to the marine and off-shore industries.**

We maintain stock and manage active points of supply in the U.S. covering a comprehensive range of ball and roller bearing units from highly regarded manufacturers. We offer complete supply chain solutions from individual supply to on-going fleet maintenance programs.

### Scope of Supply:

- Marine standard bearings
- Customized on-board spares kits
- Emergency repair kits
- Fleet wide planned bearings supply programs

### Key Customers:

- Container ships
- Tankers
- Cruise ships
- Bulk carriers
- Ferries
- Tug boats
- Naval vessels
- Off-shore

### Quality Assurance:

- Full manufacturer warrantee
- Factory test certificate
- ISO 9001
- ISO 14001
- Traceability
- Material certificate
- Conform to all leading marine classification societies.

QUALITY MANAGEMENT SYSTEM  
CERTIFIED BY DNV

== **ISO 9001:2008** ==

**We cover the entire spectrum of marine and off-shore applications to include marine engines, pumps, motors, hydraulic systems and all above deck and below deck mechanical machinery.**

17-01 Pollitt Drive, Fair Lawn, NJ 07410 / Tel: 201.703.1400 / Fax: 201.703.1454  
Email: [sales@kyodousa.com](mailto:sales@kyodousa.com) / Web: [www.kyodousa.com](http://www.kyodousa.com)



## About Our Global Fleet Maintenance Program

Customers with repeated orders and projected purchasing requirements are welcome to take advantage of our Global Fleet Maintenance Program.

This program is highly customized and designed to meet your specific technical and spare parts requirements, which will include:

- Warehousing and guaranteed stock position of critical spares
- Dynamic fleet maintenance and supply management program
- Volume discount to meet any budget and safety requirement



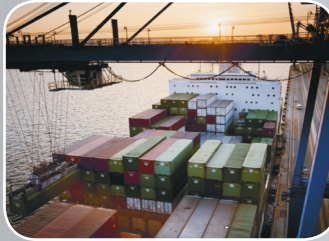
17-01 Pollitt Drive, Fair Lawn, NJ 07410  
Tel: 201.703.1400 / Fax: 201.703.1454

Email: [sales@kyodousa.com](mailto:sales@kyodousa.com)  
Web: [www.kyodousa.com](http://www.kyodousa.com)

## MARINE BEARINGS

BEARINGS TYPES	MARINE & OFF-SHORE APPLICATIONS	MANUFACTURERS
<ul style="list-style-type: none"> <li>• Deep groove bearings</li> <li>• Angular contact ball bearings</li> <li>• Self aligning ball bearings</li> <li>• Cylindrical roller bearings</li> <li>• Cylindrical roller thrust bearings</li> <li>• Tapper roller bearings</li> <li>• Spherical roller bearings</li> <li>• Spherical roller thrust bearings</li> <li>• Thrust ball bearings</li> <li>• Contact bearings</li> <li>• Ceramic Bearings</li> <li>• Shielded / sealed Bearings</li> <li>• High temperature bearings</li> <li>• Needle roller bearings</li> <li>• Slewing bearings</li> <li>• Magnetic bearings</li> <li>• Miniature precision bearings</li> <li>• Y-bearings</li> <li>• Single/double/multi-row bearings</li> <li>• Bearing housing and seals</li> </ul>	<ul style="list-style-type: none"> <li>• Main engines</li> <li>• Auxiliary engines</li> <li>• Turbo chargers</li> <li>• Transmission systems</li> <li>• Hydraulic systems</li> <li>• Gear units</li> <li>• Mooring systems</li> <li>• Cargo handling systems</li> <li>• Compressors</li> <li>• Generators</li> <li>• Pumps</li> <li>• Purifiers</li> <li>• Pulleys</li> <li>• Cranes</li> <li>• Motors</li> <li>• Fans</li> <li>• Winches</li> <li>• Steering gears</li> </ul>	<ul style="list-style-type: none"> <li>• FAG</li> <li>• HARBIN</li> <li>• HRB</li> <li>• MPB</li> <li>• NSK</li> <li>• INA</li> <li>• KOYO</li> <li>• KSB</li> <li>• MCGILL</li> <li>• NTN</li> <li>• RBC</li> <li>• SKF</li> <li>• STC – STEYR</li> <li>• TIMKEN</li> <li>• TORRINGTON</li> <li>• TSB</li> <li>• TSUBAKI</li> </ul>





**Kyodo USA is a leading supplier and distributor of air and electric power tools to the marine and off shore industry bringing world class quality, reliability and performance.**

We maintain stock and manage complete supply chain solutions to ship chandlers and ship owners world-wide. As an approved ISO-9002 quality supplier, our system is in full compliance and up to date with the IMPA and ISSA codes system.

Among the wide range of our power tools products, we are currently featuring the powerful JEX-24 and the JEX-28 multi needle Jet Chisel Needle Scaler.

- Ideal for heavy duty marine, off-shore and industrial applications.
- Effective for de-scaling, cleaning, rust removal, paint and weld slag from hard surfaces.

**JEX -24 JET CHISEL NEEDLE SCALER**



**SPECIFICATIONS:**

Model: JEX-24  
 Air Pressure: 85 PSI  
 Air Consumption: 9.5 CFM  
 Strokes Per minute: 4,000 SPM  
 Standard Needles With Machine: 3 X 180mm  
 Optional Needle Size: 2 or 4 X 180mm  
 Hose Size Requirement: 3/8" ID  
 Dimension (Length): 7-1/2  
 Weight: 6.1 LBS

**Accessories:** 6mm allen wrench, hose nipple PT3/8" X 3/8", threaded adapter PT3/8" X NPT3/8"

**JEX -28 JET CHISEL NEEDLE SCALER**

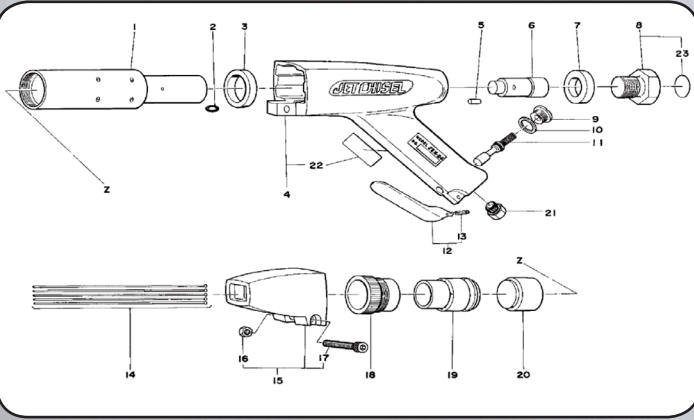


**SPECIFICATIONS:**

Model: JEX-28  
 Air Pressure: 85 PSI  
 Air Consumption: 12.4 CFM  
 Strokes Per minute: 4,500 SPM  
 Standard Needles With Machine: 3 X 180mm  
 Optional Needle Size: 2 or 4 X 180mm  
 Hose Size Requirement: 3/8" ID  
 Dimension (Length): 9-1/2  
 Weight: 7.7 LBS

**Accessories:** 6mm allen wrench, threaded adapter PT3/8" X NPT3/8", hose nipple PT3/8" X 3/8", 4mm needle supporter and needles.

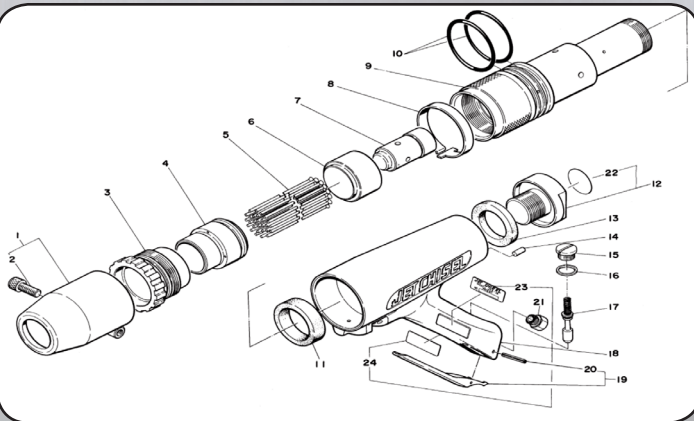
## JET CHISEL JEX-24 ASSEMBLY AND PARTS LIST



### Accessories - JEX 24

TO02350	Bushing PT3/8 X NPT3/8	1
TP00402	Needles-4 X 180mm	12
TP14992	Needle Supporter - 4mm	1

## JET CHISEL JEX-28 ASSEMBLY AND PARTS LIST



### Accessories - JEX 28

TP01462	Needle Supporter - 4mm	1
TP00402	Needles-4 X 180mm	14
TO02350	Bushing PT3/8 X NPT3/8	1



17-01 Pollitt Drive, Fair Lawn, NJ 07410  
Tel: 201.703.1400 / Fax: 201.703.1454

Email: [sales@kyodousa.com](mailto:sales@kyodousa.com)  
Web: [www.kyodousa.com](http://www.kyodousa.com)

No.	Part No.	Part Name	Quantity
1	TP02241	Cylinder	1
2	TP11992	O-Ring KS-9	1 set
3	TP02250	Front Washer 34X46X7	1
4	TA90904	Housing Sub Ass'y	1
5	TP01478	Cylinder Lock Pin	1
6	TP02242	Piston	1
7	TP02249	Rear Washer	1
8	TA93278	Rear Plug Ass'y	1
9	TP00389	Valve Cap	1
10	TP00388	Valve Packing	1
11	TA90037	Throttle Valve Ass'y	1 set
12	TP01557	Throttle Lever	1
13	(TQ00563)	Spring Pin 3 X 20	1
14	TP00341	Needles-3 X 180mm	23
15	TA93189	Needle Guide Ass'y	1
16	(TQ01484)	Hex. Nut M8	1
17	(TP16284)	Hex. Bolt 8 X 45	1
18	TP02246	Lock Ring	1
19	TP02245	Needle Supporter - 3mm	1
20	TP02243	Throttle Anvil	1
21	TQ02349	Reducer M16 XPT3/8	1

No.	Part No.	Part Name	Quantity
1	TA93365	Round Needle Guide Ass'y	1 set
2	(TP00045)	Hex. Bolt 8 X 25	1
3	TP01464	Stop Ring	1
4	TP01461	Needle Supporter - 3mm	1
5	TP00341	Needles - 3X 180mm	1 set
6	TP00399	Throttle Anvil	1
7	TP00395	Piston	1
8	TP01466	Safety Band	1
9	TP01463	Cylinder	1
10	TP01474	O-Ring W-4	2
11	TA90037	Front Washer	1
12	TA90452	Rear Bolt Ass'y	1 set
13	TP01475	Rear Washer	1
14	TP01478	Cylinder Lock Pin	1
15	TP00389	Valve Cap	1
16	TP00388	Valve Packing	1
17	TA90037	Throttle Valve Ass'y	1 set
18	TA90410	Housing Sub Ass'y	1 set
19	TP01557	Throttle Lever	1
20	(TQ00563)	Spring Pin 3 X 20	1
21	TQ02349	Reducer M16 XPT3/8	1