

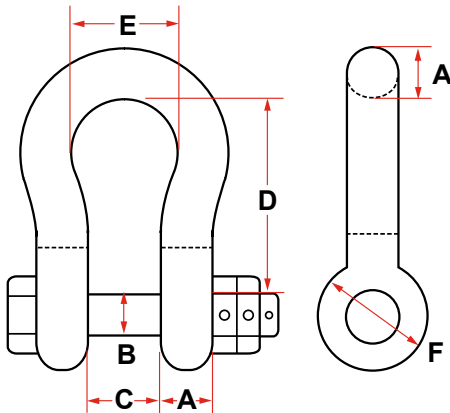


# TOWING/HARDWARE

## SEA-LINK HEAVY LIFT INDUSTRIAL AND MARINE TOWING SHACKLES

MADE WITH PRIDE IN THE USA

### ANCHOR PATTERN – REGULAR JAW



SIZE (A)	WORKING LOAD LIMIT IN TONS	PIN DIAM. IN INCHES (B)	JAW WIDTH INCHES (C)	DIMENSIONS (INCHES)			APPROX. WT. EACH IN POUNDS
				D	E	F	
1-1/2	31	1-3/4	2-3/8	5-3/4	3-7/8	3-1/2	20
1-3/4	41	2	2-7/8	7	5	4-1/4	23
2	52	2-1/4	3-1/4	7-3/4	5-3/4	4-5/8	41
2-1/4	67	2-1/2	4-1/4	9-1/4	6-1/2	5	67
2-1/2	82	2-3/4	4-1/2	10-1/2	7-1/2	5-3/4	88
2-3/4	104	3	4-1/2	11	7-3/4	6-1/8	112
3	123	3-1/4	5	13	8-1/2	6-1/2	133
3-1/2	150	3-3/4	5-3/4	15	9	8-1/4	250
4	200	4-1/4	6-1/2	16	11	9-1/8	358

#### JAW TOLERANCE

\* Anchor Size 1-1/2 - 3 Inches = (+/-).125)  
\* Anchor Size 3-1/2 - 4 Inches = (+/-).250)

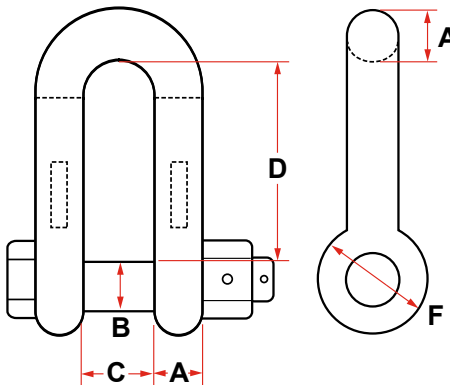
#### REACH TOLERANCE

\* Anchor Size 1-1/2 - 2-1/2 Inches = (+/-).500)  
\* Anchor Size 2-3/4 - 4 Inches = (+/-).750)

#### SAFETY

\* 5:1 Safety Factor

### CHAIN PATTERN – REGULAR JAW



SIZE (A)	WORKING LOAD LIMIT IN TONS	PIN DIAM. IN INCHES (B)	JAW WIDTH INCHES (C)	DIMENSIONS (INCHES)		APPROX. WT. EACH IN POUNDS
				D	F	
1-1/2	31	1-3/4	2-3/8	5-1/2	3-1/2	19
1-3/4	41	2	2-7/8	6-3/4	4-1/4	22
2	52	2-1/4	3-1/4	7-3/4	4-5/8	36
2-1/4	67	2-1/2	4-1/4	9-1/4	5	62
2-1/2	82	2-3/4	4-1/2	10-1/2	5-3/4	86
2-3/4	104	3	4-1/2	11	6-1/8	110
3	123	3-1/4	5	13	6-1/2	125
3-1/2	150	3-3/4	5-3/4	15	8-1/4	218
4	200	4-1/4	6-1/2	16	9-1/8	310

#### JAW TOLERANCE

\* Anchor Size 1-1/2 - 3 Inches = (+/-).125)  
\* Anchor Size 3-1/2 - 4 Inches = (+/-).250)

#### REACH TOLERANCE

\* Anchor Size 1-1/2 - 2-1/2 Inches = (+/-).500)  
\* Anchor Size 2-3/4 - 4 Inches = (+/-).750)

#### SAFETY

\* 5:1 Safety Factor

AVAILABLE WITH SINGLE NUT OR DOUBLE NUT PINS.



P. O. Box 596 (90748) • 910 Mahar Ave., Wilmington, CA 90744

(800) 322-3131 • (310) 522-9698 • Fax: (310) 522-1043

E-Mail: [sales@watermansupply.com](mailto:sales@watermansupply.com)

[www.watermansupply.com](http://www.watermansupply.com)

TradeNet ID 61935