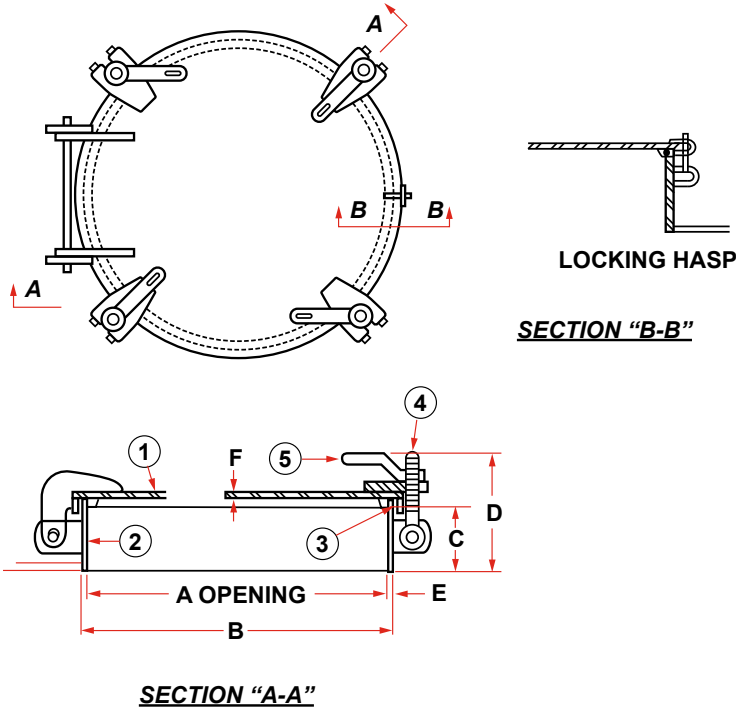




**DOORS/HATCHES**

**RAISED WATERTIGHT HATCH**



PIECE NO.	DESCRIPTION	PART NUMBER	MATERIAL
1	Cover Assembly**	77895	Mild Steel
2	Coaming	75026	Mild Steel
3	Gasket	74497	Neoprene†
4	Tumble Bolt	10774	Bronze
5	Dog Handle	74837	Malleable Iron

MODEL NO.	PART NO.	SIZE	A	B	C	D	E	F	WT. (lbs.)
DF-343-5	74950	19	19	19-3/4	5	8-5/8	3/8	5/16	90

\*OPTIONAL EXTRA  
 \*\* Gasket included w/cover assembly  
 † Other gasket material available  
 Other optional extras include galvanized finish, a flame screen and a variety of coaming heights.  
 The specification and details described by drawings or text in this literature are subject to change without notice.



P. O. Box 596 (90748) • 910 Mahar Ave., Wilmington, CA 90744  
 (800) 322-3131 • (310) 522-9698 • Fax: (310) 522-1043  
 E-Mail: sales@watermansupply.com  
 www.watermansupply.com  
 TradeNet ID 61935