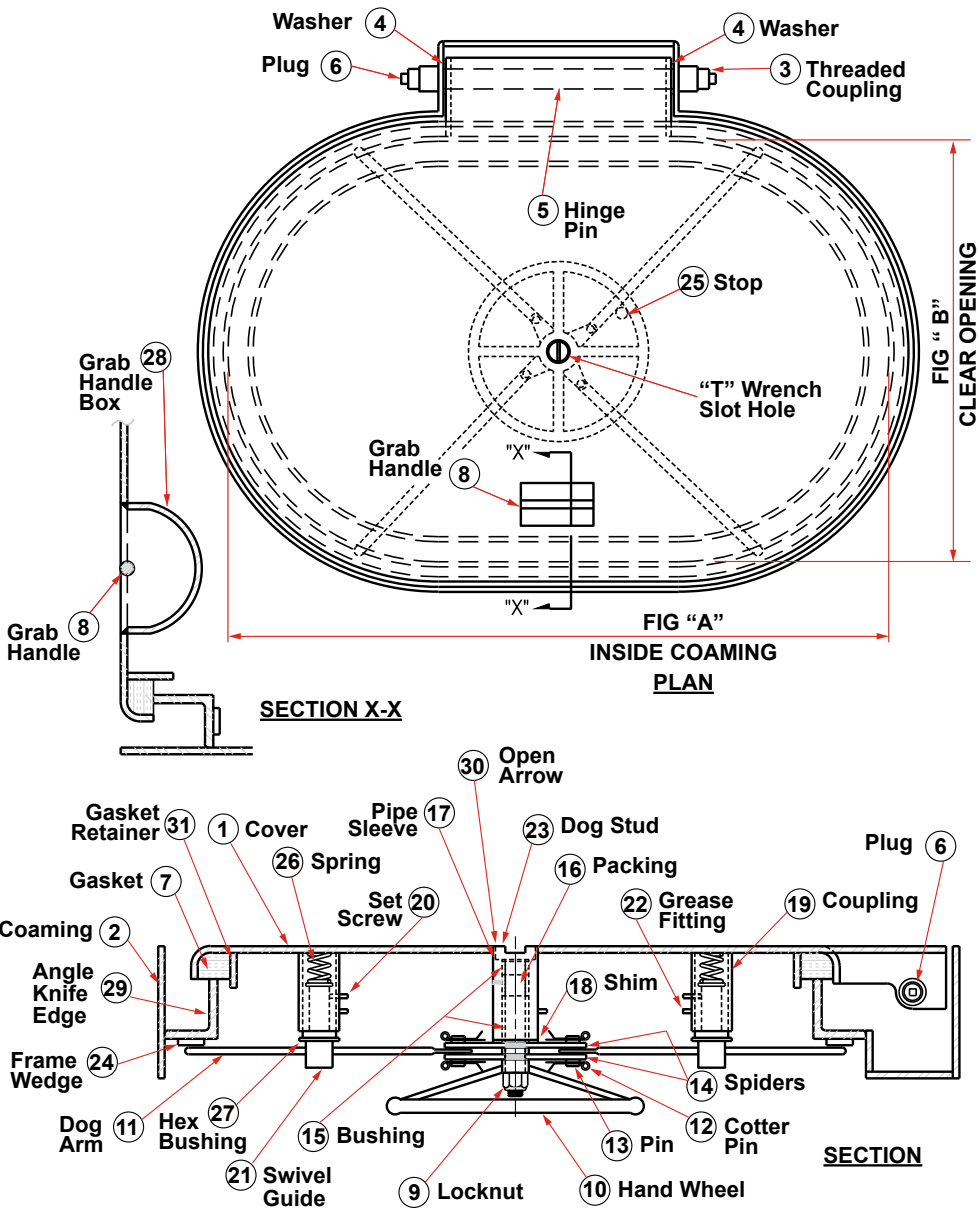




DOORS/HATCHES

**QUICK ACTING FLUSH OVAL HATCH
DRAWING NO. 204**



SCHEDULE OF MATERIAL

PC. NO.	MATERIAL
1	Mild Steel
2	Mild Steel
3	Mild Steel
4	Stainless
5	Cold Finish
6	Steel
7	Neoprene
8	Mild Steel
9	Plated Steel
10	Mild Steel
11	Mild Steel
12	Stainless
13	Brass
14	Mild Steel
15	Delrin
16	Teflon
17	Mild Steel
18	Brass
19	Mild Steel
20	Plated Steel
21	Brass
22	Plated Steel
23	Brass
24	Mild Steel
25	Mild Steel
26	Plated Steel
27	Brass
28	Steel
29	Mild Steel
30	Stainless
31	Mild Steel



P. O. Box 596 (90748) • 910 Mahar Ave., Wilmington, CA 90744
 (800) 322-3131 • (310) 522-9698 • Fax: (310) 522-1043
 E-Mail: sales@watermansupply.com
 www.watermansupply.com
 TradeNet ID 61935