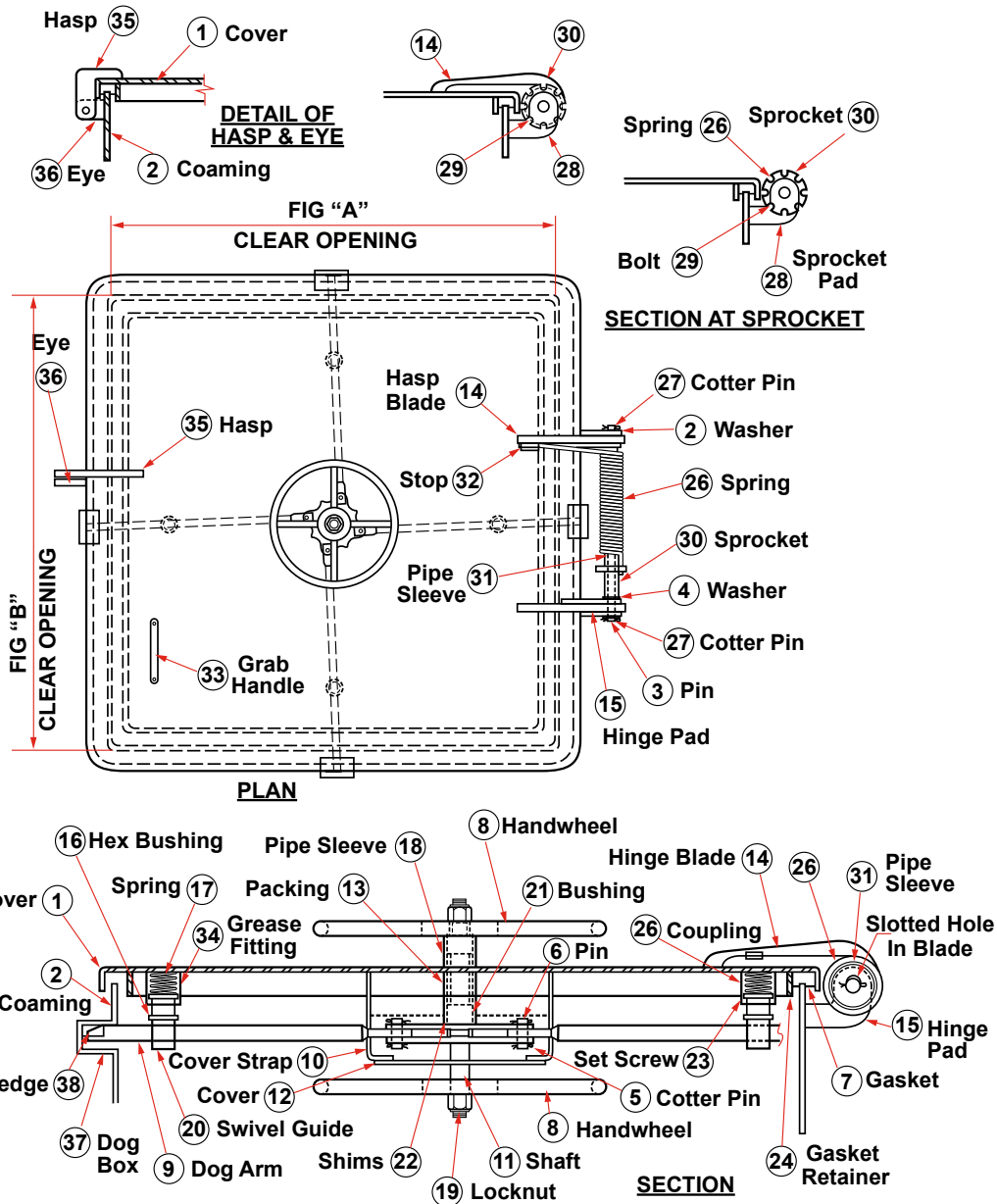




**DOORS/HATCHES**

**SPRING BALANCE QUICK ACTING WATERTIGHT HATCH DRAWING NO. 202**

**SCHEDULE OF MATERIAL**



PC. NO.	MATERIAL
1	Mild Steel
2	Mild Steel
3	Cold Finish
4	Stainless
5	Stainless
6	Brass
7	Neoprene
8	Mild Steel
9	Mild Steel
10	Mild Steel
11	Cold Finish
12	Mild Steel
13	Teflon
14	Mild Steel
15	Mild Steel
16	Brass
17	Plated Steel
18	Mild Steel
19	Plated Steel
20	Brass
21	Derlin
22	Stainless
23	Plated Steel
24	Mild Steel
25	Mild Steel
26	Stainless
27	Stainless
28	Mild Steel
29	Brass
30	Mild Steel
31	Mild Steel
32	Mild Steel
33	Mild Steel
34	Plated Steel
35	Mild Steel
36	Mild Steel
37	Mild Steel
38	Mild Steel
39	Stainless
40	Mild Steel
41	Mild Steel



P. O. Box 596 (90748) • 910 Mahar Ave., Wilmington, CA 90744  
 (800) 322-3131 • (310) 522-9698 • Fax: (310) 522-1043  
 E-Mail: sales@watermansupply.com  
 www.watermansupply.com  
 TradeNet ID 61935