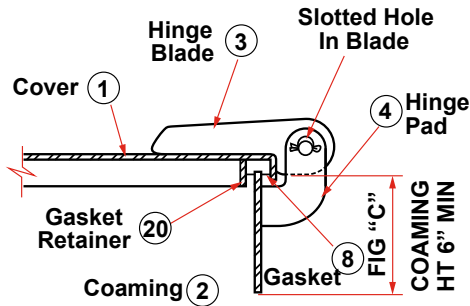
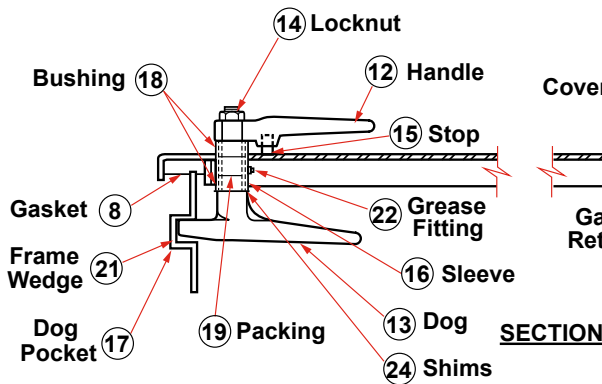
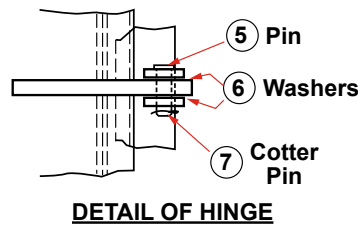
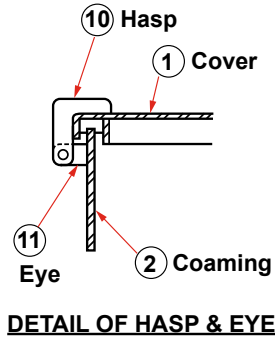
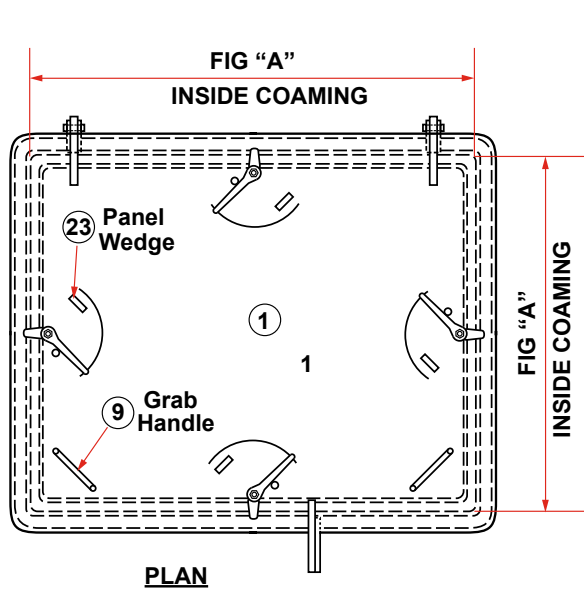




**DOORS/HATCHES**

**DRAWING NO. 201**



**SCHEDULE OF MATERIAL**

PC. NO.	MATERIAL
1	Mild Steel
2	Mild Steel
3	Mild Steel
4	Mild Steel
5	Brass
6	Stainless
7	Stainless
8	Neoprene
9	Steel
10	Mild Steel
11	Mild Steel
12	Frg. Stl.
13	Frg. Stl.
14	Plated Steel
15	Steel
16	Steel
17	Steel
18	Delrin
19	Teflon
20	Mild Steel
21	Frg. Stl.
22	Plated Steel
23	Mild Steel
24	Stainless



P. O. Box 596 (90748) • 910 Mahar Ave., Wilmington, CA 90744  
 (800) 322-3131 • (310) 522-9698 • Fax: (310) 522-1043  
 E-Mail: sales@watermansupply.com  
 www.watermansupply.com  
 TradeNet ID 61935