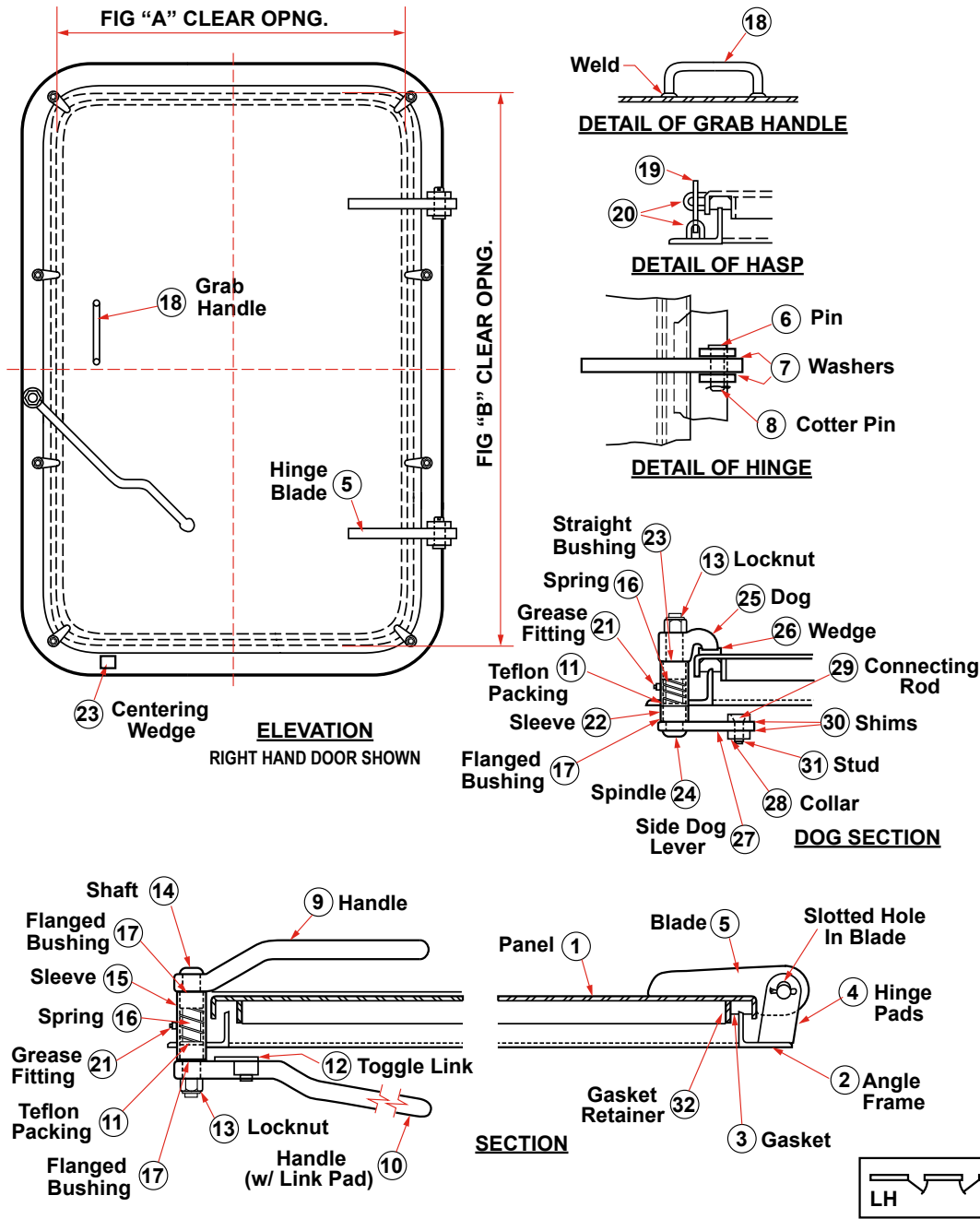




DOORS/HATCHES

**QUICK ACTING LEVER TYPE DOOR
DRAWING NO. 109**



SCHEDULE OF MATERIAL

PC. NO.	MATERIAL
1	Mild Steel
2	Mild Steel
3	Neoprene
4	Mild Steel
5	Mild Steel
6	Brass
7	Stainless
8	Stainless
9	Forged Stl
10	Forged Stl
11	Teflon
12	Mild Steel
13	Plated Steel
14	Cold Finish
15	Mild Steel
16	Plated Steel
17	Olite Bronze
18	Mild Steel
19	Mild Steel
20	Mild Steel
21	Plated Steel
22	Mild Steel
23	Olite Bronze
24	Cold Finish
25	Frg. Stl.
26	Bronze
27	Mild Steel
28	Brass
29	Mild Steel
30	Stainless
31	Mild Steel
32	Mild Steel



P. O. Box 596 (90748) • 910 Mahar Ave., Wilmington, CA 90744
 (800) 322-3131 • (310) 522-9698 • Fax: (310) 522-1043
 E-Mail: sales@watermansupply.com
 www.watermansupply.com
 TradeNet ID 61935