

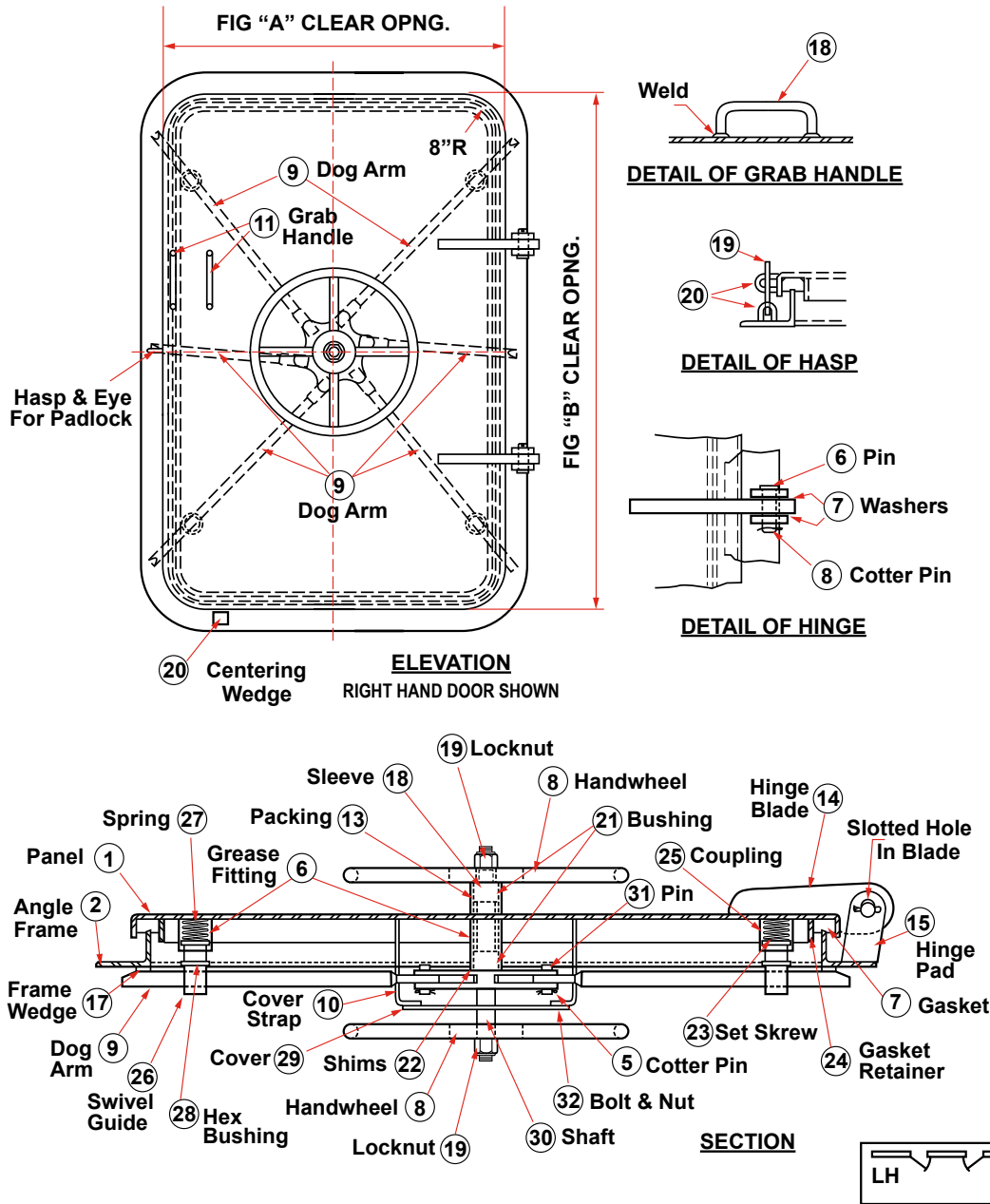


DOORS/HATCHES

QUICK ACTING WATERTIGHT DOOR DRAWING NO. 104

SCHEDULE OF MATERIAL

PC. NO.	MATERIAL
1	Mild Steel
2	Mild Steel
3	Brass
4	Teflon
5	Stainless
6	Plated Steel
7	Neoprene
8	Cold Finish
9	Cold Finish
10	Mild Steel
11	Mild Steel
12	Mild Steel
13	Teflon
14	Mild Steel
15	Mild Steel
16	Mild Steel
17	Stainless
18	Mild Steel
19	Plated Steel
20	Mild Steel
21	Delrin
22	Stainless
23	Plated Steel
24	Mild Steel
25	Mild Steel
26	Brass
27	Spring Steel
28	Brass
29	Mild Steel
30	Cold Finish
31	Brass
32	Plated Steel



P. O. Box 596 (90748) • 910 Mahar Ave., Wilmington, CA 90744
 (800) 322-3131 • (310) 522-9698 • Fax: (310) 522-1043
 E-Mail: sales@watermansupply.com
 www.watermansupply.com
 TradeNet ID 61935