

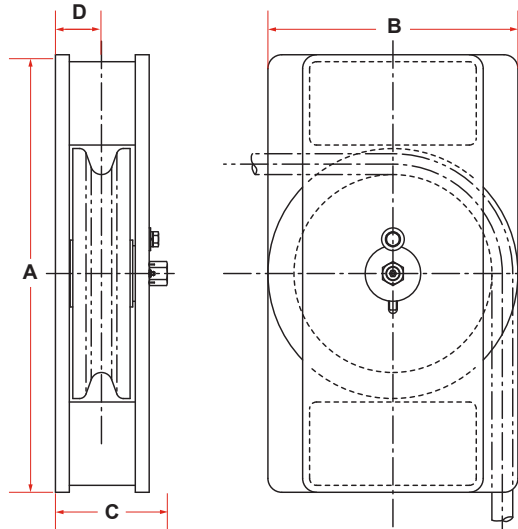


DECK FITTINGS

HORIZONTAL GUIDE SHEAVES



1200 SERIES



MODEL NO.	MAX WIRE SIZE	WIRE BREAKING STRENGTH (LBS)	SHEVE THREAD DIA.	DIMENSIONS (INCHES)				WEIGHT (LBS)
				A	B	C	D	
MD-1210	3/4	58800	8-1/2	17	11	5-1/2	2-3/16	85
MD-1212	1	89800	10	19	12	6-1/2	2-3/4	150
MD-1214	1-1/4	159800	11-7/16	21	14	7	2-3/4	200
MD-1218	1-1/2	228000	14-1/4	31-1/2	18	8	3-5/16	450
MD-1222	1-3/4	266000	18-1/2	41	22	8-1/2	3-1/2	880
MD-1224	2	344000	20	43	25	8-1/2	3-5/8	975
MD-1230	2-1/4	494000	24-7/8	45	30-5/8	11-1/2	4-1/8	1500
MD-1236	2-1/2	524000	30	55	37	13	5-3/4	2800
MD-1252	3	818000	44	83-1/2	53	14	6-1/4	6000
MD-1268	3-1/4	1223775	59-1/16	100	70	17	7	8000

STANDARD FEATURES

- Designed for Breaking Strength of EIPS-IWRC Wire Rope with 90° Wrap on the Sheave
- Cast Steel Sheave with Hardened Rope Groove for Longer Life
- Sealed Grease Lubricated Bronze Bearings in Sheave
- Weld Down Mounting Base
- Epoxy Primer Coating

OPTIONAL FEATURES

- Customized Design to Suit Your Application
- Multiple Sheaves
- Stainless Steel or Nylon Sheaves
- Bolt Down Mounting Base
- Load Monitoring System
- Three Coat Marine Paint System
- Third Party Certification



P. O. Box 596 (90748) • 910 Mahar Ave., Wilmington, CA 90744

(800) 322-3131 • (310) 522-9698 • Fax: (310) 522-1043

E-Mail: sales@watermansupply.comwww.watermansupply.com

TradeNet ID 61935