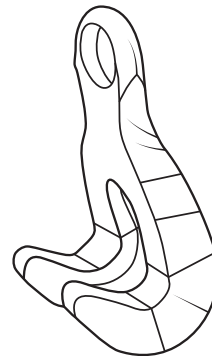
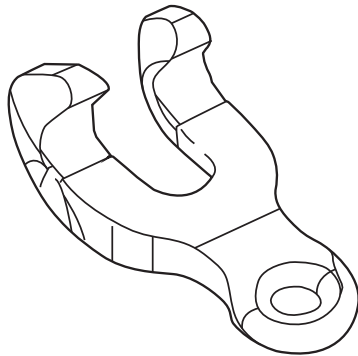




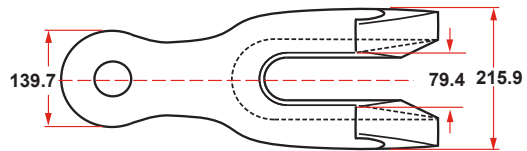
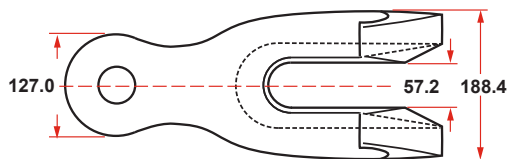
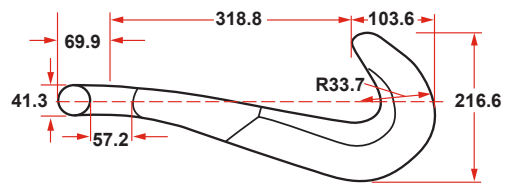
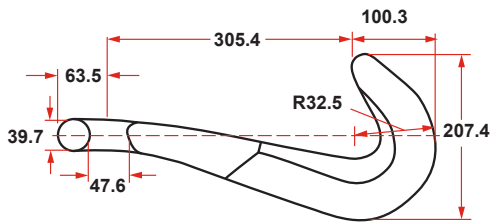
FITTINGS

DEVILS CLAW CHAIN STOPPER
WITH ABS CERTIFICATION



DEVILS CLAW
33 - 41MM (1-5/16" - 1-5/8")
44 LBS

DEVILS CLAW
46 - 60MM (1-11/16" - 2-3/8")
70 LBS



Dimension in millimeter. Other sizes available upon request.



P. O. Box 596 (90748) • 910 Mahar Ave., Wilmington, CA 90744
(800) 322-3131 • (310) 522-9698 • Fax: (310) 522-1043
E-Mail: sales@watermansupply.com
www.watermansupply.com
TradeNet ID 61935