



BUOYS

OCEAN GUARD PENDANT BUOYS



BUOY MODEL	BUOYANCY NET		BUOY WEIGHT		DIAMETER OVERALL		BUOY LENGTH		HEIGHT OVERALL		WORKING LOAD	
	LBS	KG	LBS	KG	FT	M	FT	M	FT	M	LBS	TONS
PB-25	5,511	2,500	1,223	555	4.5	1.4	6.8	2.1	7.3	2.2	150,000	68
PB-50	11,023	5,000	2,123	963	6.0	1.8	7.2	2.2	8.7	2.7	150,000	68
PB-75	16,534	7,500	3,184	1,444	6.5	2.0	9.2	2.8	9.2	2.8	150,000	68
PB-100	22,046	10,000	2,735	1,241	6.5	2.0	11.0	3.4	9.3	2.8	150,000	68
PB-150	33,069	15,000	4,020	1,823	8.0	2.4	11.5	3.5	10.9	3.3	150,000	68
PB-200	44,092	20,000	4,922	2,233	8.5	2.6	13.5	4.1	11.5	3.5	200,000	91
PB-250	55,115	25,000	5,827	2,643	9.0	2.7	15.0	4.6	11.8	3.6	200,000	91
PB-300	66,138	30,000	6,688	3,034	9.5	2.9	16.0	4.9	12.8	3.9	200,000	91
PB-350	77,160	35,000	10,581	4,800	10.3	3.1	16.8	5.1	14.5	4.4	250,000	114
PB-400	88,183	40,000	11,449	5,193	10.5	3.2	18.0	5.5	16.3	5.0	250,000	114

* Actual values for above sizes may vary +/- 15% due to variations in materials and tolerances.



OCEAN GUARD MODULAR ANCHOR PENDANT BUOYS

BUOY MODEL	BUOYANCY NET		NUMBER OF MODULES	DIAMETER OVERALL		THROUGH PIPE DIAMETER	
	LBS	KG		FT	M	IN	MM
MAPB2-4	8,818	4,000	2	6.6	2.0	6.0	152
MAPB4-8	17,637	8,000	4	6.6	2.0	6.0	152
MAPB2-8	17,637	8,000	2	7.5	2.3	6.0	152
MAPB4-16	35,273	16,000	4	7.5	2.3	6.0	152
MAPB2-11	24,250	11,000	2	9.8	3.0	8.0	203
MAPB4-22	48,501	22,000	4	9.8	3.0	8.0	203
MAPB2-17	37,478	17,000	2	10.5	3.2	10.0	254
MAPB4-34	74,956	34,000	4	10.5	3.2	10.0	254
MAPB2-23	50,705	23,000	2	10.5	3.2	10.0	254
MAPB4-46	101,411	46,000	4	10.5	3.2	10.0	254

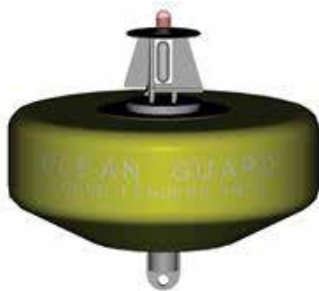
* Actual values for above sizes may vary +/- 15% due to variations in materials and tolerances.



OCEAN GUARD OCEANOGRAPHIC BUOYS

BUOY MODEL	BUOYANCY NET		FLOTATION WEIGHT		TOTAL WEIGHT		DIAMETER OVERALL		DIAMETER INTERNAL		FLOTATION HEIGHT		TOWER HEIGHT	
	LBS	KG	LBS	KG	LBS	KG	FT	M	FT	M	FT	M	FT	M
OG-10	2,205	1,000	60	27	513	233	5.4	1.6	2.2	0.7	2.3	0.7	5.6	1.7
OG-15	3,307	1,500	72	33	606	275	6.1	1.9	2.3	0.7	2.4	0.7	5.6	1.7
OG-20	4,409	2,000	99	45	752	341	6.5	2.0	2.5	0.8	2.6	0.8	6.1	1.9
ATALAS-3	5,000	2,268	130	59	1,200	544	7.4	2.3	3.2	1.0	3.2	1.0	7.0	2.1

* Actual values for above sizes may vary +/- 15% due to variations in materials and tolerances.



OCEAN GUARD NAVIGATIONAL AND MARKER BUOYS

BUOY MODEL	BUOYANCY NET		BUOY WEIGHT		BUOY DIAMETER		BUOY BODY HEIGHT	
	LBS	KG	LBS	KG	FT	M	FT	M
NAV-100	221	100	194	88	3.0	0.9	2.3	0.7
NAV-200	441	200	399	181	3.8	1.2	3.0	0.9
NAV-500	1,103	500	650	295	4.9	1.5	3.0	0.9
NAV-750	1,654	750	981	445	6.7	2.0	3.3	1.0
NAV-1000	2,205	1,000	1,816	824	8.5	2.6	4.2	1.3
NAV-3000	6,615	3,000	3,112	1,412	10.0	3.0	4.5	1.4
NAV-5000	11,025	5,000	4,462	2,024	10.2	3.1	6.0	1.8
NAV-7500	16,538	7,500	6,703	3,040	11.8	3.6	6.6	2.0
NAV-10000	22,050	10,000	7,845	3,558	13.2	4.0	6.0	1.8

* Actual values for above sizes may vary +/- 15% due to variations in materials and tolerances.



P. O. Box 596 (90748) • 910 Mahar Ave., Wilmington, CA 90744
 (800) 322-3131 • (310) 522-9698 • Fax: (310) 522-1043
 E-Mail: sales@watermansupply.com
 www.watermansupply.com
 TradeNet ID 61935