

KAHLENBERG INDUSTRIES, INC.

## MODEL M-512 WHISTLE CONTROL

### For Automated Control of Ship's Whistles

The M-512 Whistle Control is a fully enclosed, flush mount electronic device that provides for the automatic control of the ship's whistle and morse light. Besides serving as a fog signal timer for sounding codes in restricted visibility, the compact M-512 performs maneuvering codes, danger code, IMO/SOLAS General Alarm, and incorporates an "at-will" push button.



- International/Inland Fog Signal Codes (USCG/IMO Navigation Rule 35)
- Maneuvering Codes: Altering Course to Starboard, Port, Astern, Danger
- At-Will and Automatic Control of up to two horns and/or two morse lights
- Produces SOLAS General Emergency Alarm Code or pass through from external alarms
- Mute Connection for external Sound Surveillance Systems
- Illuminated, Dimmable display with red L.E.D. indicator lamps
- Waterproof Console Mount
- Integrates with other external controls, includes CAN connection for PC
- Controlled by 12 or 24 volt D.C. power, relays 12-240 volts A.C/D.C. to connected devices
- Faceplate Dimensions: 5.75" x 3" x 2.42" (146 x 76 x 62 mm)

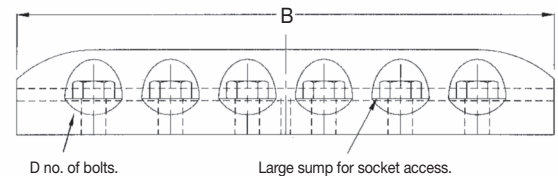
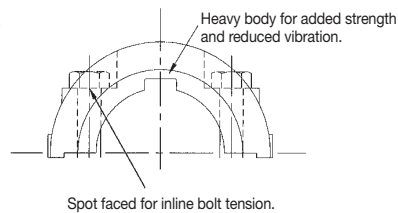
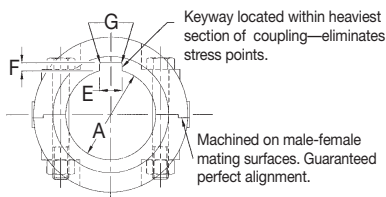
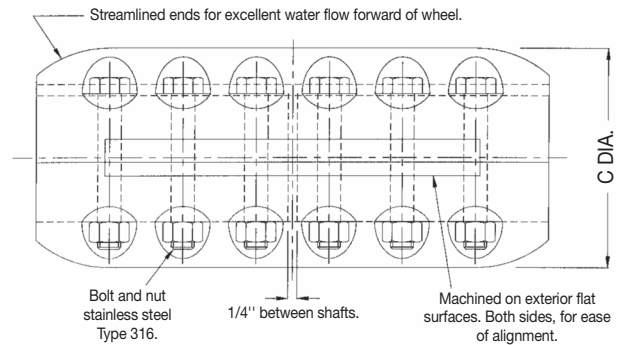
## MUFF COUPLINGS

Available in manganese bronze or stainless steel with matching bolts.

### SPECIFICATIONS / DIMENSIONS

Shaft Size (A)	Overall Length (B)	Coupling Diameter (C)	Bolt Quantity (D)	Keyway Dimensions			Assembly No.	Drawing No.	Approx. Weight (Bronze)
				(E)	(F)	(G)			
1-1/2"	7-1/2"	3-1/4"	8	3/8"	3/16"	1/16"	G165-1	2-3795	16 lbs.
1-3/4"	9"	4"	8	7/16"	7/32"	1/16"	G165-7	3-4707	28 lbs.
2"	10"	4-1/4"	8	1/2"	1/4"	1/16"	G165-6	3-4699	32 lbs.
2-1/4"	10-1/2"	4-1/2"	8	9/16"	9/32"	3/32"	G165-5	3-4697	36 lbs.
2-1/2"	11"	4-3/4"	8	5/8"	5/16"	3/32"	G165-3	3-4689	40 lbs.
2-3/4"	11-3/4"	5"	12	5/8"	5/16"	3/32"	G165-4	3-4688	44 lbs.
3"	12-1/2"	5-1/2"	12	3/4"	5/16"	3/32"	G165-2	3-4575	55 lbs.
3-1/2"	14"	6"	12	7/8"	5/16"	1/8"	G165-8	3-4886	80 lbs.
4"	16-3/4"	6-3/4"	12	1"	5/16"	1/8"	G165-9	3-4860	126 lbs.

Larger sizes available on request



## KAHLENBERG INDUSTRIES, INC.

Tel: 920.793.4507



Fax: 920.793.1346

SINCE 1895

1700 12th STREET • P.O. BOX 358 • TWO RIVERS, WISCONSIN 54241 U.S.A.

## MARINE PRODUCTS SINCE 1895

See and hear Kahlenberg air horns at  
[www.kahlenberg.com](http://www.kahlenberg.com)