

EATON CROUSE-HINDS PAULUHN

VAPOR & WATERTIGHT LIGHTING FIXTURES



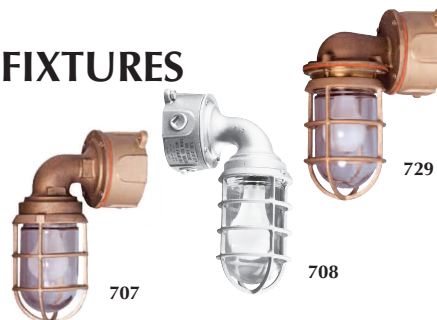
Incandescent and/or Compact Fluorescent

CONSTRUCTION: Cast brass or copper-free aluminum with stainless steel hardware. Guard of same material is provided as standard, except when polycarbonate globes are requested.

APPROVALS: UL 1598 (Marine Outside Type Saltwater), ABS, and conforms to IP66.

OUTLETS: All units are supplied undrilled although are suitable for up to 1" N.P.T. four way.

GASKET: One-piece silicone gasket provides a watertight seal between the lens and housing.



LAMP HOLDERS: A phenolic lampholder with nickel plated copper screw shell is supplied as standard. For porcelain lampholder, add suffix -P to incandescent part numbers below. For shockproof lampholder, add suffix -SP to any part number.

REFLECTOR: (for 717 and 718): For shallow dome reflector, add suffix -L to part number below. For 30° angle dome reflector, add suffix -N to part number.

VOLTAGE: (for 717 and 718): Fluorescent luminaires are supplied to operate on 120V AC 60 Hz as standard. Incandescent luminaires are rated to 300V AC.

GLOBE: A clear glass globe is supplied as standard. To order the following options, add the appropriate suffix to the part number below.

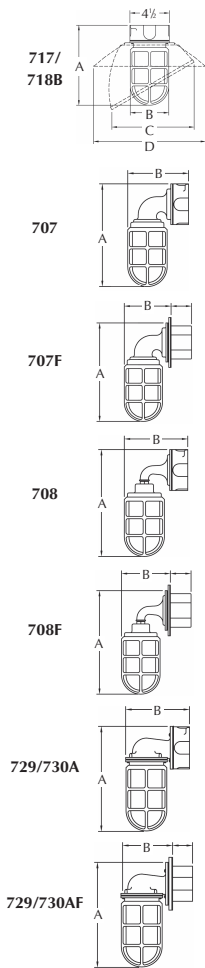
Polycarbonate (for 100W incandescent or compact fluorescent only; guard not provided): -PG, Frosted: -FST, Heat Resistant Clear Glass: -HR, Red: -RED, Blue: -BLU, Green: -GRN, Yellow: -YEL

BALLAST: (for 707, 708, 729 and 730): Fluorescent luminaires are supplied complete with ballasts rated to operate on 120V AC 60 Hz as standard. Also available as 277V 60 Hz. To order, add -276 to part number below. Incandescent luminaires are rated to 300V AC.

LAMPS: Compact fluorescent luminaires are supplied with lamps. Incandescent are supplied without lamps.

TERMINAL BLOCK: A four pole or six pole terminal block is available as an option for incandescents. To order four pole block, add suffix -T to part number below; to order six pole block, add suffix -T6 to part number.

DOUBLE POLE TOGGLE SWITCH: Available as an option (not for Flush Mounted Boxes). To order, add suffix -K to part number below.



INCANDESCENT LUMINAIRES

Description	Lamp Size	Brass Wt. (lbs.)	Brass (B)	Aluminum (A)	Dimensions (in.)				
Ceiling Mount					Box Depth	A	B	C Option N	D Option L
Round Box	100W max	8.5	717B	717A	2	9-1/8	4-1/4	9-1/4	12-1/2
Round Box	150W max	8.5	717B7	717A7	2	9-7/8	4-1/4	9-1/4	12-1/2
Round Box	200W max	10.5	718B8	718A8	2	11-1/8	5-3/8	10-3/4	15-3/4
Round Box	300W max	10.5	718B	718A	2	12-1/2	6	10-3/4	15-3/4
Square Box	100W max	7.25	717BQ	717AQ	2	9-1/8	4-1/4	9-1/4	12-1/2
Square Box	150W max	7.25	717BQ7	717AQ7	2	9-7/8	4-1/4	9-1/4	12-1/2
Square Box	200W max	10.25	718BQ8	718AQ8	2	11-1/8	5-3/8	10-3/4	15-3/4
Square Box	300W max	10.25	718BQ	718AQ	2	12-1/2	6	10-3/4	15-3/4
Wall or Flush Mount									
Wall	100W max	7.0	707B	707A	2	11	5		
		8.0	729B	729A	2	10-1/8	7-1/8		
Wall	150W max	7.0	707B7	707A7	2	11-3/4	5		
		8.5	729B7	729A7	2	10-7/8	7-1/8		
Wall	200W max	10.25	708B8	708A8	2	14-5/8	5-3/4		
		10.5	730B8	730A8	2	12-1/8	9-1/4		
Wall	300W max	10.25	708B	708A	2	15-1/2	6-1/16		
		10.5	730B	730A	2	13-1/2	9-9/16		
Flush	100W max	8.25	707BF	707AF	2-3/8	11	6-3/4		
		9.3	729BF	729AF	2-3/8	10-1/8	5-3/8		
Flush	150W max	8.25	707BF7	707AF7	2-3/8	11-3/4	6-3/4		
		9.3	729BF7	729AF7	2-3/8	10-7/8	5-3/8		
Flush	200W max	11.25	708BF8	708AF8	2-3/8	14-5/8	7-1/2		
		11.8	730BF8	730AF8	2-3/8	12-1/8	7-1/2		
Flush	300W max	11.25	708BF	708AF	2-3/8	15-1/2	7-13/16		
		11.8	730BF	730AF	2-3/8	13-1/2	7-13/16		

COMPACT FLUORESCENT LUMINAIRES

Available in 13, 18, 26 and 32W versions. These lamps will fit the corresponding 150W incandescent luminaires. To order, choose the part number of the similar style incandescent luminaire above, prefix the number with the letter F, and add the desired lamp size as a suffix: -13 for 13W, -18 for 18W, -26 for 26W, or -32 for 32W lamp. Example: F729B7-18 is a bracket mounted marine brass 18W compact fluorescent with a 2" deep junction box.