

FAST-ACTING FUSES

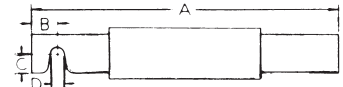
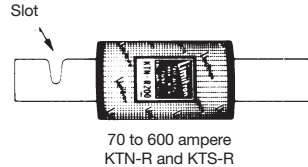
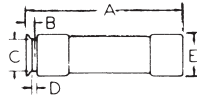
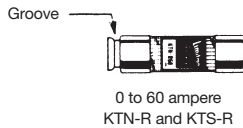
200,000 Ampere Interrupting Rating

Listed by Underwriters Laboratories, Inc. as Class RK1

U.L. Class RK1 Current-Limiting Fuses

For Use in Rejection Fuse Clips or Ordinary Fuse Clips

KTN-R (250V a-c) and KTS-R (600V a-c) fuses have the same electrical characteristics as the KTN and KTS fuses. However, KTN-R and KTS-R LIMITRON Fast-Acting Fuses are Class RK1 rejection type fuses.



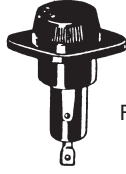
Symbol	Ampere					
	Rating	A	B	C	D	E
KTN-R (250V a-c)	0-30	2"	5/32"	3/8"	5/64"	9/16"
	35-60	3"	3/16"	5/8"	3/32"	13/16"
KTS-R (600V a-c)	0-30	5"	3/16"	5/6"	3/32"	13/16"
	35-60	5-1/2"	1/4"	7/8"	3/32"	1-1/16"

Symbol	Ampere				
	Rating	A	B	C	D
KTN-R (250V a-c)	70-100	5-7/8"	1/2"	23/64"	9/32"
	110-200	7-1/8"	11/16"	35/64"	9/32"
	225-400	8-5/6"	15/16"	51/64"	13/32"
	450-600	10-3/8"	1-1/8"	63/64"	17/32"
KTS-R (600V a-c)	70-100	7-7/8"	1/2"	23/64"	9/32"
	110-200	9-5/8"	11/16"	35/64"	9/32"
	225-400	11-5/8"	15/16"	51/64"	13/32"
	450-600	13-3/8"	1-1/8"	63/64"	17/32"

FUSEHOLDERS



FHN55W



FHN23W



FHN26G1

Panel mounted, extractor post type electrical fuseholders. Type FHL is indicating and FHN is non indicating. The U is unsealed, the G is dripproof, the W is waterproof.

MIL Specification	Military Type Designation	Electrical Rating	Fuse Accommodated	Basic Design
MIL-F-19207/1	FHL 10U	30A, 90-250V	F02, F03	HGA-C*
MIL-F-19207/2	FHL11U	30A, 90-250V	F02, F03	HGB-C*
MIL-F-19207/3	FHL12U	30A, 90-500V	F60, F07, F09	HGC*
MIL-F-19207/8	FHL17G1	20A, 90-250V	F02, F03	HKL*
	FHL18G1-1	20A, 12-22V	F02, F03	
	FHL18G1-2	20A, 23-33V	F02, F03	
	FHL18G1-3	20A, 34-45V	F02, F03	
	FHL18G1-4	20A, 46-60V	F02, F03	
	FHL18G1-5	20A, 61-80V	F02, F03	
	FHL18G1-6	20A, 81-90V	F02, F03	
	FHL18G1-7	20A, 2.5-4V	F02, F03	
	FHL18G1-8	20A, 5-7V	F02, F03	
MIL-F-19207/9	FHL18G1-9	20A, 8-12V	F02, F03	
				HKX*

MIL Specification	Military Type Designation	Electrical Rating	Fuse Accommodated	Basic Design	
MIL-F-19207/10	FHN19G	15A, 250V	F05, F06	HCM*	
MIL-F-19207/11	FHN20G	20A, 250V	F02, F03	HTA*	
MIL-F-19207/12	FHL22W	20A, 250V	F10	HPF*C*	
MIL-F-19207/13	FHN23W	30A, 250V	F60, F09	HPC-D*	
MIL-F-19207/16	FHN26G1	30A, 250V	F02, F03	HKP*	
	FHL29G-1	30A, 12-22V	F02, F03		
	FHL29G-2	30A, 23-33V	F02, F03		
	MIL-F-19207/18	FHL29G-3	30A, 34-45V	F02, F03	HGN-CI*
	FHL29G-4	30A, 46-60V	F02, F03		
	FHL29G-5	30A, 61-80V	F02, F03		
MIL-F-19207/19	FHL29G-6	30A, 81-90V	F02, F03		
	FHL30G-1	30A, 12-22V	F02, F03		
	FHL30G-2	30A, 23-33V	F02, F03		
	FHL30G-3	30A, 34-45V	F02, F03	HGF-C*	
	FHL30G-4	30A, 46-60V	F02, F03		
	FHL30G-5	30A, 61-80V	F02, F03		
MIL-F-19207/20	FHL30G-6	30A, 81-90V	F02, F03		
	FHN31G1	5A, 250V	F01	HJM*	
	MIL-F-19207/26	FHN42W	5A, 125V	FM01	HWA-AF*
MIL-F-19207/36	FHN55W	30A, 250V	F02, F03	HKP/RFI*	
MIL-F-19207/38	FHL57G	15A, 125V	F77A		
MIL-F-19207/39	FHL58G	15A, 125V	F77A		

* Commercial equivalent part number is for basic design reference only, NOT intended to be used as a substitute for the military part number.



154 27th Street, Brooklyn, NY 11232

www.manning-electric.com

Stocking Distributor for
Cooper Bussmann

TradeNet ID 53046



Tel: (718) 832-2488 • Fax: (718) 832-2493