

EATON CROUSE-HINDS PAULUHN



FN215

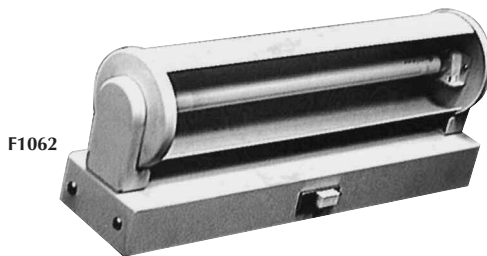
FLUORESCENT BERTH/ MIRROR LIGHT

CSA ABS IP44

- Corrosion resistant housing in heavy duty extruded copper-free marine grade aluminum with an oven polyester powder coated white high gloss protective finish.
- The diffuser is clear prismatic, high impact acrylic.
- The reflector is aluminum with a high gloss white polyester powder coat.
- The ballast is a high power factor 120V 60 Hz.
- The unit comes with a single pole toggle.
A double pole switch is available as an option.
- The unit accommodates 1 or 2 fluorescent lamps, F15T8, FT10 or T12.
- The unit comes with a 125V 3 wire 2 pole "U" ground convenience outlet.

Description	Lamp Size	Aluminum Catalog No.
Berth & Mirror Light	(1)-15W T8 or T10	FN115
Berth & Mirror Light	(2)-15W T8 or T10	FN215
Berth & Mirror Light	(2)-17W T8	FN217
Berth & Mirror Light	(2)-20W T12	FN220
Hallway/Under Counter	(1)-32W T8	FN132
Hallway/Under Counter	(1)-40W T12	FN140

FLUORESCENT BERTH/MIRROR LIGHT 1 – 8W Surface Mount ABS IP40



F1062

CONSTRUCTION: Corrosion resistant housing in copper-free marine grade aluminum with a polyester powder coated anodized type finish. **BALLAST:** A high power factor 120V, 60 Hz is provided. **SWITCH:** A push type momentary contact switch is provided as standard. **LAMP TYPE:** One fluorescent 8W F8T5. **CONVENIENCE OUTLET:** A 125V 3 wire 2 pole "U" ground is standard. **SHADE:** Adjustable for light control. **OPTIONS:** **Ballast:** Other voltages and 50 Hz are available as options. **Convenience Outlet:** The fixture, less the convenience outlet, is available as an option. Add the suffix "LCO".

Description	Lamp Size	Alum. Weight	Alum. Cat. No.
Inside Drip Proof Fixture	(1) F8T5	6 lbs. (2.72 kg)	F1062

FLUORESCENT CEILING FIXTURES

Surface or Recessed Mount

U.L. 1598A Marine, U.L. 1571 Fluorescent
U.S.C.G. Accepted—20 Watt – 40 WattFR220
Recessed Mount

CONSTRUCTION: Aluminum housing with a high gloss polyester powder coat protection. The diffuser frame is of extruded aluminum with a polyester powder coating anodized type finish. An access plate is provided with a terminal block and an extra knock out. The fixtures are prewired at the factory.

DIFFUSER: A standard flat prismatic DR acrylic lens is held to the frame by spring clips. The lens frame assembly is fastened to the housing with a sliding hinge arrangement which allows the lens frame assembly to slide down and swing away. Captive knurled thumb screws hold the frame in position.

REFLECTOR: Aluminum with a white, high gloss polyester powder coated finish.

TERMINAL BLOCK: A phenolic terminal block is supplied on the access plate for convenience and ease of wiring.

BALLAST: Standard ballast supplied is H.P.F. 120V 60 Hz.

LAMPHOLDER: The spring loaded lampholders provide positive contact and maximum resistance to shock and vibration.

OPTIONS:

Diffuser: Also available: Dropdish prismatic suffix "H"; and flat prismatic suffix "J".

Ballast: Others are available as options, including L.P.F., low voltages, dimmer, low temperature, electronic, T8, compact fluorescent and emergency ballasts.

Description	Lamp Size	Aluminum Weight	Drip Proof
Recessed Mount Ceiling Fixture	1-20W	11 lbs. (5.00 kg)	FR120J
	2-20W	12 lbs. (5.45 kg)	FR220J
	3-20W	16 lbs. (7.27 kg)	FR320J
	4-20W	26 lbs. (11.82 kg)	FR420J
Recessed Mount Ceiling Fixture	1-40W	16 lbs. (7.27 kg)	FR140J
	2-40W	17 lbs. (7.73 kg)	FR240J
	3-40W	20 lbs. (9.09 kg)	FR340J
	4-40W	29 lbs. (13.18 kg)	FR440J