

EATON CROUSE HINDS PAULUHN CEILING MOUNT LED LUMINAIRES

Operational saving LED versions of LRS recessed mount ceiling fixtures.

Applications include: Marine/offshore interiors, pilot house, state room/office, corridor/passageway and galley.

LED: Neutral white (4000K, 80 CRI)

HOUSING: Type 5052H32 aluminum with an electrostatically applied polyester powder coat finish.

LENS FRAME: Type 6063T6 aluminum with an electrostatically applied polyester powder coat finish

REFLECTOR: Type 5052H32 aluminum with an electrostatically applied white polyester powder coat finish.

LENS: Flat prismatic DR acrylic

ENTRIES: Access plates with 1/2" and 3/4" NPT knockouts at each end

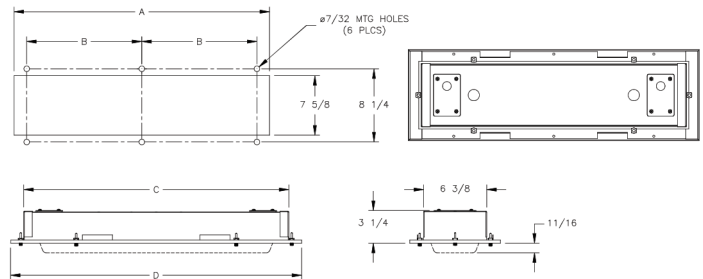
MOUNTING: Recessed ceiling type

TERMINAL BLOCK: Internal 2-pole - (1) at each end

LED DRIVER: 120 to 277 volt 50/60 Hz electronic

FEATURES:

- 2 foot, 2 lamp, T8 equivalent; 4 foot, 2 lamp, T8 equivalent.
- Reduces energy consumption up to 66% compared to equivalent fluorescent models as well as providing cooler interiors which lessens the demand on HVAC systems.
- Efficient fixtures delivering 103 lumens/watt.
- Ease of wiring and installation via access panels on back of fixture and terminal blocks.
- Rated life of 50,000+ hours @ 40°C operating ambient and 24/7 continuous operation for 365 days.



Part No.	Length	Amps	Watts	Lumens	Start Temp.	Max. Ambient	Supply Wire	Weight (lbs.)
LRS22L	2 ft.	0.12	14	1,444	-30°C	40°C	90°C	8.5
LRS44L	4 ft.	0.24	28	2,870	-30°C	40°C	90°C	14.0

LED FLOODLIGHTS

These floodlights provide full-spectrum, crisp, white light.

MOUNTING STYLE: Yoke mounted

WATTAGES: 263W (PFM25L); 531W (PFM50L)

VOLTAGE RANGE, VAC: 120-277V 50/60 HZ; 347-480V 50/60 HZ (UNV34)

HOUSING: Die cast aluminum with Corro-free™ epoxy powder coat

EXTERNAL HARDWARE: Stainless steel

LENS: Heat- and impact-resistant glass

GASKET: Silicone

WEIGHTS: 52 lbs. (PFM25L), 110 lbs. (PFM50L)



FEATURES:

- Instant illumination and restrike
- Cold temperature operation/no warm-up required
- Redundancy in drivers with multiple series circuits connected to each driver to avoid complete loss of illumination
- Easy installation - yoke design to mount to SFA6
- Energy-efficient technology - up to 65% energy savings over HID fixtures
- Provides up to 100,000 hours of life - eliminates need for frequent lamp replacement
- Contains no mercury or other hazardous substances
- Shock- and vibration-resistant solid-state luminaires have no filaments or glass components that could break - greatly reduces the risk of premature failure
- Operating ambient -40°C to +40°C
- Dark sky compliant (with dark sky visor)

Part No.	Lumens
PFM25LCY/UNV1 76	26,240
PFM25LCY/UNV1 33	32,041
PFM50LCY/UNV1 76	53,890
PFM50LCY/UNV1 33	64,082