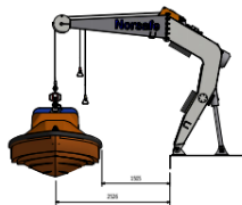
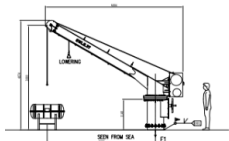
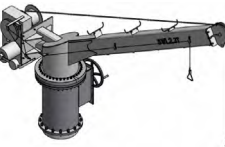
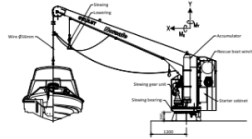
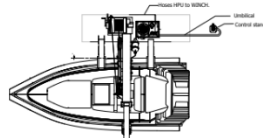
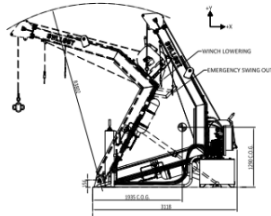
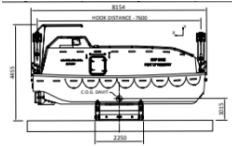


## VIKING LIFE-SAVING EQUIPMENT, INC. Norsafe - Conventional Davits, Rescue Boat Davits

The davits are designed and manufactured in accordance with SOLAS and National Authority requirements.



LHP – Conventional Lifeboat Davit Series		
Davit type	Max lifting/lowering (kg)	System weight (kg)
LHP-110	11,214	12,000
LHP-150	15,290	14,200

Winch: Hydraulic, Lowering height: 37 m

NDA – Rescue Boat Davit Series			
Davit type	Max lifting/lowering (kg)	System weight (kg)	Lowering height (m)
NDA-16	1,650	1,400	38.8
NDA-25	2,854	2,500	38.8
NDA-28	2,800	3,000	38.8
NDA-40	4,000	3,200	62.9
NDA-40 (NORSOK R-002)	4,000	3,200	75
NDA-65	6,625	7,800	38.8
NDA-100	TBA	TBA	TBA

Winch: Hydraulic (except for NDA-100, which is TBA)

NDC – Rescue Boat Davit Series			
Davit type	Max lifting/lowering (kg)	System weight (kg)	Lowering height (m)
NDC-40	4,000	1,950	62.9
NDC-40 NO (NORSOK R-002)	4,000	1,950	75
NDC-65	6,625	2,550	62.1

Winch: Hydraulic

NRC – Rescue Boat Davit Series				
Davit type	Max lifting/lowering (kg)	System weight (kg)	Lowering height (m)	Winch
NRC-25	2,500	2,300	40.0	Electrical

NDSC – Combi Davit Series				
Davit type	Max lifting/lowering (kg)	System weight (kg)	Lowering height (m)	Winch
NDSC-R-23	2,300	1,750	40	Gravity lowering/ manually hoisting
NDSC-25	2,500	2,000	40	Electrical
NDSC-34	3,465	2,800	40	Electrical

NRB – Rescue Boat Davit Series				
Davit type	Max lifting/lowering (kg)	System weight (kg)	Lowering height (m)	Winch
NRB-20	2,038	2,500	30	Hydraulic
NRB-30	3,058	3,150	35	Hydraulic
NRB-40	4,077	3,600	31	Hydraulic



**VIKING  
NORSAFE**

270 Certified Servicing Stations worldwide  
– see [www.VIKING-life.com](http://www.VIKING-life.com)

**VIKING Norsafe**  
668 Distributors Row, Suite D, New Orleans, LA 70123 USA

Tel: +1 504 733 0100 | TradeNet ID 52643