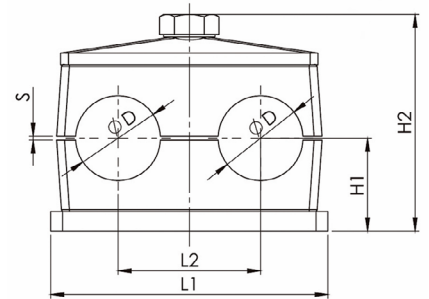
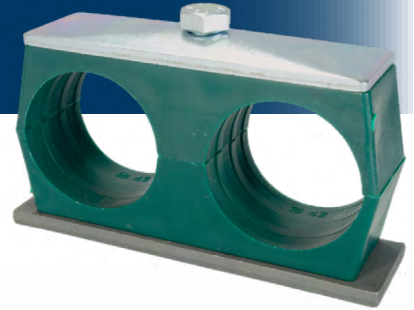


## WORLD WIDE METRIC

## Twin Series Clamp Kits

DIN 3015/3



Group	Ø mm	NB in	Ø in	L1	L2	H1	H2	S min.	Item No.
T1	6			37	20	16.5	41	0.6	HCT-006.0-STU*
	6.4		1/4						HCT-006.4-STU
	8		5/16						HCT-008.0-STU
	9.5		3/8						HCT-009.5-STU
	10	R 1/8							HCT-010.0-STU
	12								HCT-012.0-STU
T2	12.7		1/2	55	29	18.5	44.5	0.7	HCT-012.7-STU
	13.5	R 1/4							HCT-013.5-STU
	14								HCT-014.0-STU
	15								HCT-015.0-STU
	16		3/8						HCT-016.0-STU
	17.2	R 3/8							HCT-017.2-STU
T3	18			70	36	23.5	54.5	0.7	HCT-018.0-STU
	19		3/4						HCT-019.0-STU
	20								HCT-020.0-STU
	21.3	R 1/2							HCT-021.3-STU
	22		7/8						HCT-022.0-STU
	23								HCT-023.0-STU
T4	25			85	45	25.5	58.5	0.7	HCT-025.0-STU
	25.4		1						HCT-025.4-STU
	26.9	R 3/4							HCT-026.9-STU
T5	28			110	56	32	71.5	0.7	HCT-028.0-STU
	30								HCT-030.0-STU
	32		1-1/4						HCT-032.0-STU
	33.7	R1							HCT-033.7-STU
	35								HCT-035.0-STU
	38		1-1/2						HCT-038.0-STU
T5	40			110	56	32	71.5	0.7	HCT-040.0-STU
	42	R 1-1/4							HCT-042.0-STU

## KIT CONTENTS

- (1) Polypropylene Clamp Body
- (1) Galvanized Steel Cover Plate
- (1) Phosphated Steel Weld Plate
- (2) Galvanized Steel Hex Head Bolts

Twin Series Clamp Kits are also available with 316 Stainless Steel hardware.

## KIT OPTIONS

## HARDWARE MATERIAL

Carbon Steel (ST 37-2) is standard

For 316 Stainless Steel, **CHANGE -ST to -SS** on the item number.

\* ORDERING EXAMPLE  
HCT-006.0-SSU

## THREAD

UNC is standard

For metric, **CHANGE "U" to "M"** on the item number

\* ORDERING EXAMPLE  
HCT-006.0-STM



**EAST COAST**  
Branchburg, NJ  
Tel: 732.247.2300  
Fax: 732.247.7258

**GULF COAST**  
Houston, TX  
Tel: 713.682.2400  
Fax: 713.682.2624

**SOUTHEAST**  
Davie, FL  
Tel: 954.321.0784  
Fax: 954.321.2591

**WEST COAST**  
Paramount, CA  
Tel: 562.633.4141  
Fax: 562.633.3280