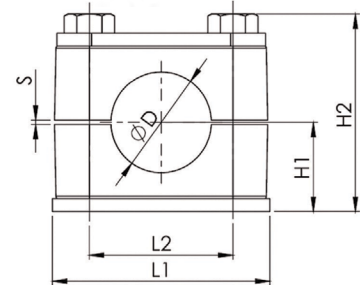
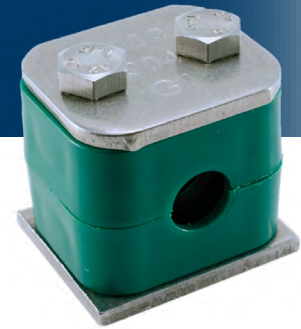


WORLD WIDE METRIC

Standard Series Clamp Kits

DIN 3015/1



Group	Ø mm	NB in	Ø in	L1	L2	H1	H2	S min.	Item No.
S1	6			36	20	16.5	37	0.4	HCS-006.0-STU*
	6.4		1/4						HCS-006.4-STU
	8		5/16						HCS-008.0-STU
	9.5		3/8						HCS-009.5-STU
	10	R 1/8							HCS-010.0-STU
	12								HCS-012.0-STU
S2	12.7		1/2	42	26	19.5	43	0.6	HCS-012.7-STU
	13.5	R 1/4							HCS-013.5-STU
	14								HCS-014.0-STU
	15								HCS-015.0-STU
	16		5/8						HCS-016.0-STU
	17.2	R 3/8							HCS-017.2-STU
S3	18			50	33	21	46	0.6	HCS-018.0-STU
	19		3/4						HCS-019.0-STU
	20								HCS-020.0-STU
	21.3	R 1/2							HCS-021.3-STU
	22		7/8						HCS-022.0-STU
	23								HCS-023.0-STU
S4	25			60	40	24	52	0.6	HCS-025.0-STU
	25.4		1						HCS-025.4-STU
	26.9	R 3/4							HCS-026.9-STU
S5	28			71	52	32	68	0.8	HCS-028.0-STU
	30								HCS-030.0-STU
	32		1-1/4						HCS-032.0-STU
	33.7	R 1							HCS-033.7-STU
	35								HCS-035.0-STU
	38		1-1/2						HCS-038.0-STU
S6	40			86	66	36	76	0.8	HCS-040.0-STU
	42	R 1-1/4							HCS-042.0-STU
	44.5		1-3/4						HCS-044.5-STU
S7	48.3	R 1-1/2		122	94	51.5	107	0.8	HCS-048.3-STU
	50.8		2						HCS-050.8-STU
	57.2		2-1/4						HCS-057.2-STU
	60.3	R 2							HCS-060.3-STU
	63.5		2-1/2						HCS-063.5-STU
	70		2-3/4						HCS-070.0-STU
S8	73			148	120	64	132	0.8	HCS-073.0-STU
	76.1	R 2-1/2	3						HCS-076.1-STU
	88.9	R 3	3-1/2						HCS-088.9-STU
	101.6		4						HCS-101.6-STU

KIT CONTENTS

- (1) Polypropylene Clamp Body
- (1) Galvanized Steel Cover Plate
- (1) Phosphated Steel Weld Plate
- (2) Galvanized Steel Hex Head Bolts

Standard Series Clamp Kits are also available with 316 Stainless Steel hardware.

KIT OPTIONS

HARDWARE MATERIAL

Carbon Steel (ST 37-2) is standard

For 316 Stainless Steel, **CHANGE -ST to -SS** on the item number.

* **ORDERING EXAMPLE**
HCS-006.0-SSU

THREAD

UNC is standard

For metric, **CHANGE "U" to "M"** on the item number

NOTE: Groups S1 - S8 are 1/4-20 UNC or M6 thread

* **ORDERING EXAMPLE**
HCS-006.0-STM



EAST COAST
Branchburg, NJ
Tel: 732.247.2300
Fax: 732.247.7258

GULF COAST
Houston, TX
Tel: 713.682.2400
Fax: 713.682.2624

SOUTHEAST
Davie, FL
Tel: 954.321.0784
Fax: 954.321.2591

WEST COAST
Paramount, CA
Tel: 562.633.4141
Fax: 562.633.3280