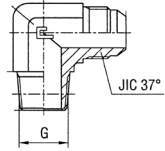


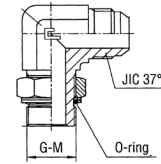
CAST S.P.A.

FLARED STEEL TUBE FITTINGS – CONVERSION ADAPTERS



Male Stud Elbow – Thread: BSP Taper

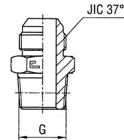
Bar	Ø Tube		G	JIC 37°	Part No. Standard Body
	mm	in.			
350	6	1/4	1/8	7/16-20	201001.3
350	8	5/16	1/8	1/2-20	201002.3
350	10	3/8	1/4	9/16-18	201003.3
350	12	1/2	3/8	3/4-16	201004.3
350	14-15-16	5/8	1/2	7/8-14	201005.3
350	18-20	3/4	3/4	1-1/16-12	201006.3
290	25	1	1	1-5/16-12	201007.3
240	30-32	1-1/4	1-1/4	1-5/8-12	201008.3
240	38	1-1/2	1-1/2	1-7/8-12	201009.3
350	6	1/4	1/4	7/16-20	201010.3
350	8	5/16	1/4	1/2-20	201011.3
350	10	3/8	1/8	9/16-18	201012.3
350	10	3/8	3/8	9/16-18	201013.3
350	10	3/8	1/2	9/16-18	201014.3
350	12	1/2	1/4	3/4-16	201015.3
350	12	1/2	1/2	3/4-16	201016.3
350	12	1/2	3/4	3/4-16	201017.3
350	14-15-16	5/8	3/8	7/8-14	201018.3
350	14-15-16	5/8	3/4	7/8-14	201019.3
350	18-20	3/4	1/2	1-1/16-12	201020.3
290	18-20	3/4	1	1-1/16-12	201021.3
290	25	1	3/4	1-5/16-12	201022.3
240	30-32	1-1/4	1	1-5/8-12	201023.3



Adjustable Male Stud Elbow with O-Ring & Washer
Thread: BSP Taper

Bar	Ø Tube		G	JIC 37°	Part No. Standard Body
	mm	in.			
350	6	1/4	1/8	7/16-20	204401.3
315	8	5/16	1/8	1/2-20	204402.3
315	10	3/8	1/4	9/16-18	204403.3
250	12	1/2	3/8	3/4-16	204404.3
250	14-15-16	5/8	1/2	7/8-14	204405.3
250	18-20	3/4	3/4	1-1/16-12	204406.3
200	25	1	1	1-5/16-12	204407.3
200	30-32	1-1/4	1-1/4	1-5/8-12	204408.3
160	38	1-1/2	1-1/2	1-7/8-12	204409.3
315	6	1/4	1/4	7/16-20	204410.3
250	6	1/4	3/8	7/16-20	204411.3
250	6	1/4	1/2	7/16-20	204412.3
350	8	5/16	1/8	1/2-20	204413.3
250	8	5/16	3/8	1/2-20	204414.3
250	10	3/8	3/8	9/16-18	204415.3
250	10	3/8	1/2	9/16-18	204416.3
315	12	1/2	1/2	3/4-16	204417.3
250	12	1/2	1/2	3/4-16	204418.3
250	12	1/2	3/4	3/4-16	204419.3
250	14-15-16	5/8	3/8	7/8-14	204420.3
250	14-15-16	5/8	3/4	7/8-14	204421.3
250	18-20	3/4	1/2	1-1/16-12	204422.3
200	18-20	3/4	1	1-1/16-12	204423.3
250	25	1	3/4	1-5/16-12	204424.3
200	25	1	1-1/4	1-5/16-12	204425.3
200	30-32	1-1/4	1	1-5/8-12	204426.3
200	38	1-1/2	1-1/4	1-7/8-12	204427.3

Male Stud Coupling
Thread: BSP Taper



Bar	Ø Tube		G	JIC 37°	Part No. Standard Body
	mm	in.			
350	6	1/4	1/8	7/16-20	200801.3
350	8	5/16	1/8	1/2-20	200802.3
350	10	3/8	1/4	9/16-18	200803.3
350	12	1/2	3/8	3/4-16	200804.3
350	14-15-16	5/8	1/2	7/8-14	200805.3
350	18-20	3/4	3/4	1-1/16-12	200806.3
290	25	1	1	1-5/16-12	200807.3
240	30-32	1-1/4	1-1/4	1-5/8-12	200808.3
240	38	1-1/2	1-1/2	1-7/8-12	200809.3
350	6	1/4	1/4	7/16-20	200810.3
350	8	5/16	1/4	1/2-20	200811.3
350	10	3/8	1/8	9/16-18	200812.3
350	10	3/8	3/8	9/16-18	200813.3
350	10	3/8	1/2	9/16-18	200814.3
350	12	1/2	1/4	3/4-16	200815.3
350	12	1/2	1/2	3/4-16	200816.3
350	12	1/2	3/4	3/4-16	200817.3
350	14-15-16	5/8	3/8	7/8-14	200818.3
350	14-15-16	5/8	3/4	7/8-14	200819.3
350	18-20	3/4	1/2	1-1/16-12	200820.3
290	18-20	3/4	1	1-1/16-12	200821.3
290	25	1	3/4	1-5/16-12	200822.3
240	30-32	1-1/4	1	1-5/8-12	200823.3
240	38	1-1/2	1-1/4	1-7/8-12	200824.3

Adjustable Male Stud Elbow with O-Ring & Washer
Thread: Metric

Bar	Ø Tube		M	JIC 37°	Part No. Standard Body
	mm	in.			
350	6	1/4	10x1	7/16-20	204501.3
315	8	5/16	12x1,5	1/2-20	204502.3
315	10	3/8	14x1,5	9/16-18	204503.3
315	12	1/2	16x1,5	3/4-16	204504.3
250	14-15-16	5/8	22x1,5	7/8-14	204505.3
250	18-20	3/4	27x2	1-1/16-12	204506.3
200	25	1	33x2	1-5/16-12	204507.3
200	30-32	1-1/4	42x2	1-5/8-12	204508.3
160	38	1-1/2	48x2	1-7/8-12	204509.3
315	6	1/4	12x1,5	7/16-20	204510.3
350	8	5/16	10x1	1/2-20	204511.3
315	8	5/16	14x1,5	1/2-20	204512.3
315	10	3/8	16x1,5	9/16-18	204513.3
315	12	1/2	18x1,5	3/4-16	204514.3
315	14-15-16	5/8	18x1,5	7/8-14	204515.3
250	14-15-16	5/8	20x1,5	7/8-14	204516.3
250	18-20	3/4	22x1,5	1-1/16-12	204517.3
250	25	1	27x2	1-5/16-12	204518.3



Distributed in North America by
World Wide Metric Inc.

EAST COAST
Branchburg, NJ
Tel: 732.247.2300
Fax: 732.247.7258

GULF COAST
Houston, TX
Tel: 713.682.2400
Fax: 713.682.2624

SOUTHEAST
Davie, FL
Tel: 954.321.0784
Fax: 954.321.2591

WEST COAST
Paramount, CA
Tel: 562.633.4141
Fax: 562.633.3280