

STI MARINE

Marine Fire Rated Pathways – MDM400

Cable raceway device consisting of heavy gauge steel shell with self-adjusting intumescent liners to allow cables to pass through fire-rated bulkheads and decks on ships while providing a maintenance-free alternative to traditional cable transits in non-water-tight divisions.

PRODUCT FEATURES:

- Tested to IMO A.754 FTP (Class A0-A60, B0-B30, and H0-H120 Bulkheads and Decks)
- Most cost-effective solution for new cable installations
- Self-adjusting cable sealing liners allow for easy retrofit of cable moves, additions, and changes for existing installations
- Modular units can be installed together with available gang plates
- Device splits apart to allow for retrofit around existing cables
- Rapid intumescent expansion under fire conditions quickly seals off the path for fire, gases, and smoke
- Allows 0 to 100% visual fill of cables
- Empty devices can be installed for future use
- Maximizes volume of cable that can be installed into a given space while reducing the overall footprint
- Protection of cable jacketing and insulation materials
- Galvanized steel shell with marine-grade powder coating used with single or gang plates
- Flexible intumescent liners accommodate vibration
- Resistant to aging and weathering

MAINTENANCE:

This product is maintenance free. Observed damage can be repaired per the original approved design.

ORDERING INFORMATION

WWM Item #	Description
STI-MDM400A	Marine 400 Single Solid Plate Kit and Pathway Unit
STI-MDM400B	Marine 400 Single Split Plate Kit and Pathway Unit
STI-MDM400C	Marine Two-Gang Solid Plate Kit w/ (2) Pathway Units
STI-MDM400D	Marine Two-Gang Split Plate Kit w/ (2) Pathway Units
STI-MDM400G	Marine 400 Four-Gang Solid Plate Kit w/ (4) Pathway Units

WARRANTY INFORMATION:

STI typically warrants its products for one full year. For complete details of our standard warranty, please visit www.stimarine.com/warranty.

THIRD PARTY APPROVALS:



PHYSICAL PROPERTIES:

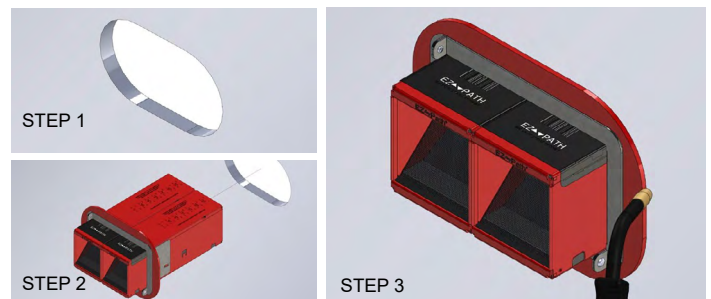
Property (As Supplied)	Value
Shell Composition:	0.059 in. thick galvanized steel (1.5mm)
Flange Composition: Integrated Flange	No. 50 KSI ABS-approved mild steel
Powder Coating:	Marine Grade Red (Custom Colors Available)
Physical Dimensions:	4 x 4-5/8 x 14 in. (102 x 118 x 359 mm)
Cable Loading Area:	12.7 sq. in. / 3-3/8 in. max diameter (82 cm ² /79 mm)
Expansion Begins:	320°F (160°C)
Expansion Volume:	800%
In-Service Temperature:	-10°F – 120°F (-23°C - 49 °C)
Storage Temperature:	< 120°F (49 °C)

INSTALLATION INSTRUCTIONS:

General Note: Read Safety Data Sheets (SDS) and product label for safe handling.

Step 1: Cut a circular or square opening into deck or bulkhead

Step 2: Insert device(s) through opening and secure the plate to deck or bulkhead by means of steel screws or welds.

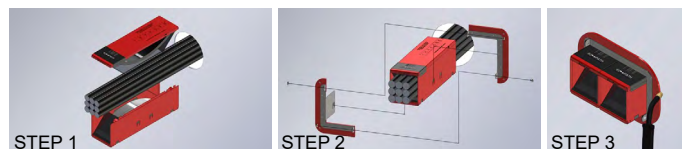


RETROFIT INSTALLATION INSTRUCTIONS:

Step 1: Remove lid from device to capture cable bundle, re-install lid.

Step 2: Slide device through opening and secure with split plate kit. If installing multiple devices, connect devices together with integral hook and eye attachments on side of each unit.

Step 3: Secure plate to deck or bulkhead with steel screws or welds.



EAST COAST
Branchburg, NJ
Tel: 732.247.2300
Fax: 732.247.7258

GULF COAST
Houston, TX
Tel: 713.682.2400
Fax: 713.682.2624

SOUTHEAST
Davie, FL
Tel: 954.321.0784
Fax: 954.321.2591

WEST COAST
Paramount, CA
Tel: 562.633.4141
Fax: 562.633.3280