

STI MARINE

Marine Fire Rated Pathways – MDM300

Cable raceway device consisting of heavy gauge steel shell with self-adjusting intumescent liners to allow cables to pass through fire-rated bulkheads and decks on ships while providing a maintenance-free alternative to traditional cable transits in non-water-tight divisions.

PRODUCT FEATURES:

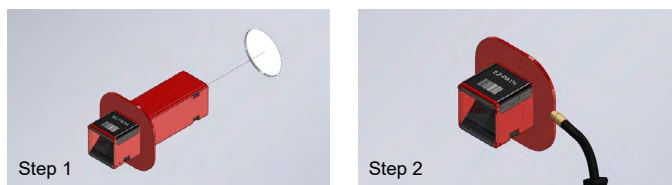
- Tested to IMO FTP Code 2010, Part 3 (Class A0-A60, B0-B30 Bulkheads and Decks)
- Most cost-effective solution for new cable installations
- Rapid intumescent expansion under fire conditions quickly seals off the path for fire, gases, and smoke
- Allows 0 to 100% visual fill of cables
- Empty devices can be installed for future use
- Maximizes volume of cable that can be installed into a given space while reducing the overall footprint
- Protection of cable jacketing and insulation materials
- Steel shell with marine-grade powder coating and integral mild steel flange
- Flexible intumescent liners accommodate vibration
- Resistant to aging and weathering

INSTALLATION INSTRUCTIONS:

General Note: Read Safety Data Sheets (SDS) and product label for safe handling.

Step 1: Cut a circular or square opening into deck or bulkhead.

Step 2: Insert the device through opening and mechanically attach the integral steel plate by means of welds.

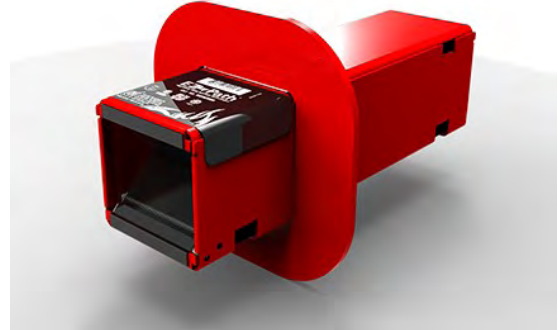


MAINTENANCE:

This product is maintenance free. Observed damage can be repaired per the original approved design.

ORDERING INFORMATION

WWM Item #	Description
STI-MDM300A	Series 300 EZ-Path® with Integrated Solid Plate



PHYSICAL PROPERTIES:

Property (As Supplied)	Value
Shell Composition:	0.059 in. thick galvanized steel (1.5mm)
Flange Composition: Integrated Flange	No. 50 KSI ABS-approved mild steel
Powder Coating:	Marine Grade
Physical Dimensions:	3 x 3 x 10.5 in. (76 x 76 x 267 mm)
Cable Loading Area:	5 sq. in. / 1.75 in. max diameter (32 cm ² / 44 mm)
Expansion Begins:	320°F (160°C)
Expansion Volume:	800%
In-Service Temperature:	-10°F – 120°F (-23°C - 49 °C)
Storage Temperature:	< 120°F (49 °C)
Shelf-Life:	No Limit

WARRANTY INFORMATION:

STI typically warrants its products for one full year. For complete details of our standard warranty, please visit www.stimarine.com/warranty.

THIRD PARTY APPROVALS:



EAST COAST
Branchburg, NJ
Tel: 732.247.2300
Fax: 732.247.7258

GULF COAST
Houston, TX
Tel: 713.682.2400
Fax: 713.682.2624

SOUTHEAST
Davie, FL
Tel: 954.321.0784
Fax: 954.321.2591

WEST COAST
Paramount, CA
Tel: 562.633.4141
Fax: 562.633.3280