

OCEAN MARINE SERVICES

www.oceanma.com

OCEANMARINES
OCEAN MARINE SERVICES CO.,LTD

Address : OCEAN BUILDING NO.273, JANGSAENGPO-GORAERO,
NAM-KU, ULSAN, KOREA 680-050

TEL : +82.52.226.0700(BOARD)

FAX : +82.52.265.9991, +82.52.267.9030

WEB : www.oceanma.com

E-MAIL : ocean@oceanma.com



OCEANMARINES
OCEAN MARINE SERVICES CO.,LTD

2015 EDITION

"Our effort is moving our customers"

CONTENTS

03 CEO's Message

04 History

05 Overview_Vision/Business/Certifications

06 Ocean Scope_Products & Services / Agents

08 Business

10 Hyundai Ballast Water Treatment System

CEO's Message

Dear Sir and Madam,

We are very much pleased to take this opportunity to introduce our company. Ocean Marine Services Co., Ltd. has founded in 1986 and running the business for more than 25 years successfully.

We are a authorized sales agent of Hyundai Heavy Ind Co., Ltd(HHI-EMD) and we deal with Engine and Spare Parts, Korean Machinery Parts, Marine Equipment Supply, General Stores (registered with ISSA & IMPA) and Total Lubricants.

We always provide the highest level of professional marketing & sales services to our principals. We consist of professional staffs with maritime background to ensuring our representative & sales network provide our customers the best solution in order to meet their requirements.

Our vision is 'be reliable, responsible and proactive.'

To achieve our vision we will always support and provide the best service to our customers and we promise to supply the best products with reasonable price on fast delivery time in world-wide.

"WE THINK ABOUT CUSTOMER SATISFACTION BEFORE WE ACT."

Sincerely yours,

James (JM) Kim / Managing Director

OCEANMARINE
OCEAN MARINE SERVICES CO., LTD.



Overview

VISION

Reliable

The customers may rely on us. Ocean will kindly reply on any related enquiries in 24 hours. Ocean is experienced therefore, you may trust and we will provide the best goods and services to satisfy the customers.

Responsible

Ocean is responsible on every enquiries and orders. As an authorized agent of Hyundai, we promise to supply qualified genuine engines and spare parts to our customers.

We are responsible for every product and every customer.

Proactive

Ocean is thinking ahead to provide the best goods with services. We are always planning and organizing the issue to communicate with existing and future customers. Ocean is a dting ahead to suggest the solutions to the customers.

BUSINESS

- Spare Parts Sales for Hyundai-MAN B&W/ Wärtsilä/ HIMSSEN (Authorized Sales Agent of Hyundai Heavy Industries)
- Spare Parts Sales for DOOSAN/ STX-Engine/ Japanese-Engine
- Spare Parts Sales for Korea Made Machineries
- Technical Sales for BWTS, Re-Engine
- Packaged Major Overhaul Service for HIMSSEN Engine
- Reconditioning and Repairing Jobs (All ports in Korea)
- General Marine Store / Provision Supply (All ports in Korea)
- Lubricants Oil Sales (Authorized Sales Agent of TOTAL Lubricants)

History

1980 - 1989

- 1986 04 - Established company
- 11 - Established the Busan branch
- 1987 06 - Registered a member of ISSA(UK)
- 1988 10 - Contracted sales agent with MANHO ROME MFG CO, Ltd.

1990 - 1999

- 1990 06 - Registered a member of IMPA(UK)
- 1991 02 - Appointed as a supplier of Hyundai Mipo Dockyard Co, Ltd
- 1992 03 - Appointed as a supplier of Hyundai Merchant Marine Co, Ltd(HMM)
- 1993 09 - Registered to KFTA for import and export
- 1998 11 - Registered to Korea Shipping Agencies Association

2000 - 2010

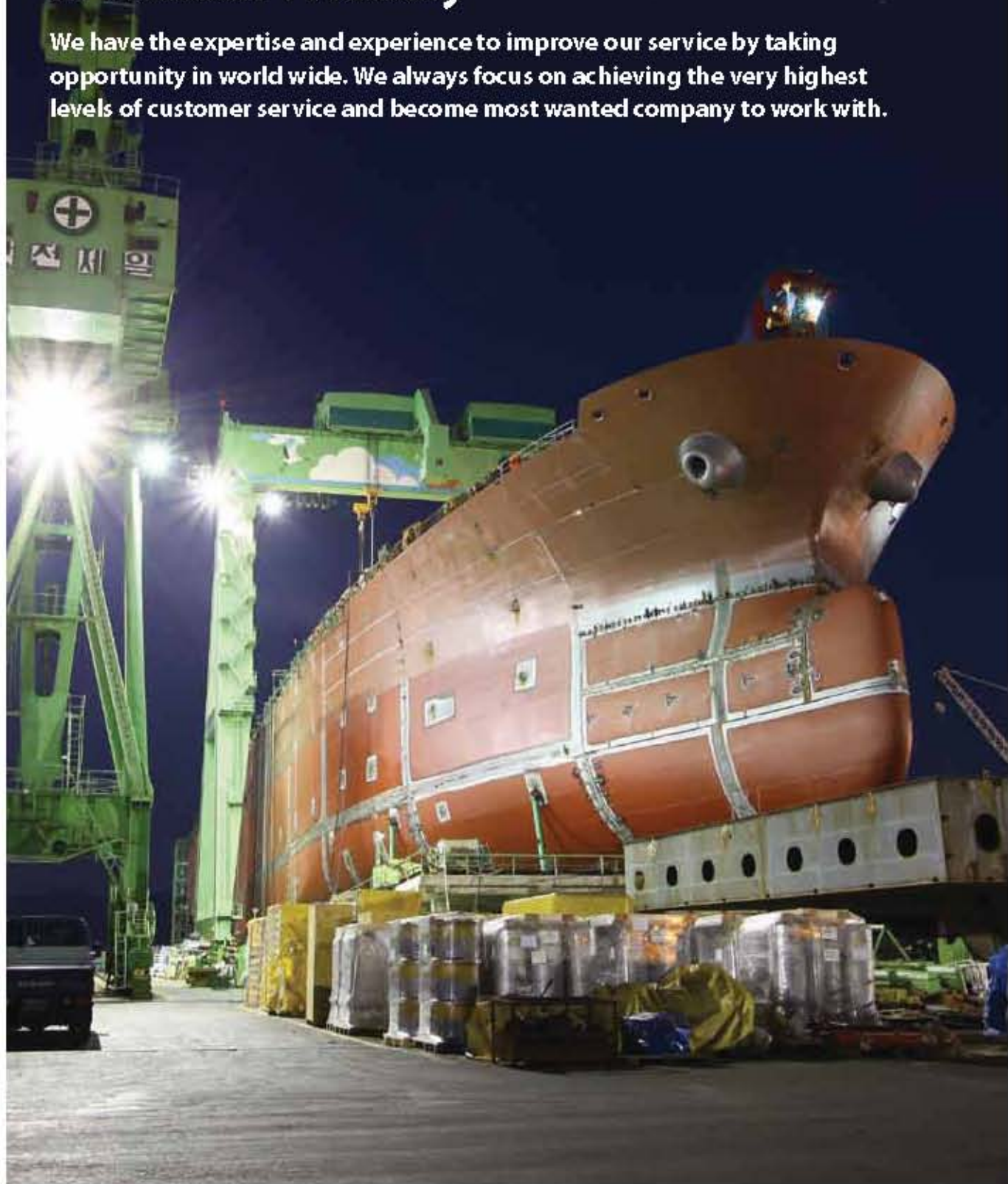
- 2000 02 - Certified ISO 9002 DNV
- 04 - Re-build and extend of head office and warehouse
- 09 - Appointed as an authorized agent of Hyundai Heavy Industries Co, Ltd(HHI-EMD)
- 11 - Awarded the prize for 5million dollars export achievement from government
- 2001 07 - Appointed as a sales agent of Century Corp
- 2002 04 - Appointed as an exclusive agent of SOTECO in Korea
- 2003 05 - Appointed as a supplier for EUKOR Car Carriers Inc
- 12 - Appointed as a supplier for Korea Marine Transport Co, Ltd(KMTC)
- 2004 12 - Certified ISO 9001:2000 DNV
- 2005 02 - Appointed as a supplier of Heung-A Shipping Co, Ltd
- 02 - Appointed as a agent of Total Lubmarine
- 09 - Appointed as a supplier for Hanjin Shipping Co, Ltd
- 10 - Appointed as a STX PAN Ocean Shipping POSship management
- 2007 01 - Registered to purchasing faculty of Hyundai Heavy Industries
- 08 - Registered to purchasing faculty of Daewoo Shipping and Marine Engineering
- 09 - Registered to purchasing faculty of Hyundai Samho Industries
- 2008 01 - Registered to purchasing faculty of Samsung Heavy Industries
- 03 - Contracted with GMR Power Plant in Chennai, India
- 11 - Awarded the prize for 10million dollars export achievement from government
- 2010 02 - Appointed as a agent of S-oil TOTAL

2011 -

- 2011 11 - Awarded the prize for 20million dollars export achievement from government
- 2013 01 - Appointed as a exclusive sales agent of Viper Wire Rope Lubricator Australia
- 2014 01 - Moved to new head office and warehouse

Shipbuilding Industry Leader in Human-Friendly

We have the expertise and experience to improve our service by taking opportunity in world wide. We always focus on achieving the very highest levels of customer service and become most wanted company to work with.



Business Scope

PRODUCTS & SERVICES

■ Part Sales (Sales Agent of HHI-EMD'S)

- Spare Parts Sales for Marine Engine & Diesel Power Plant
- Spare Parts Sales for Korean Made Machinery
- FPSO & Offshore (Supplying Commissioning & Preservation Materials)

■ Technical Sales (Sales Agent of HHI-EMD'S)

- Sales for Re-Engine & Developing for Retrofit Items
- Spare Parts Sales for COPT, BWTS & Thruster
- Packaged Major Overhaul Service for HIMS EN Engine
- Repairing Jobs, Re-conditioning & Calibration Works

■ Sales for TOTAL Lub Oil

■ General marine Stores, Provision & Bonded Stores

AGENTS



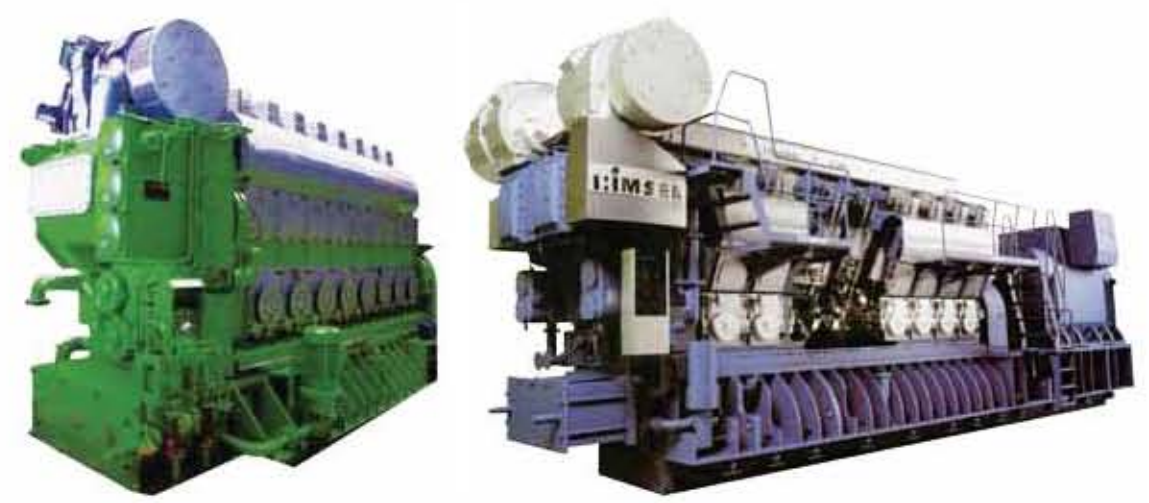
Parts Sales

Sales Agent of HHI-EMD'S

ENGINE & ENGINE SPARE PARTS

- Two and Four Stroke Diesel Engine and Spares
- HIMSSEN Engines and Spares
- STX-MAN Turbocharger Spares
- Propeller, Shaft and Rudder Stock
- Power Plant
- Japanese Engine & Spares

2-Stroke Engines		4-Stroke Engines	
HYUNDAI - MAN B&W	HYUNDAI WARSILA	HIMSSEN ENGINE	MAN B&W Holoby
S46MC-C(ME-B)	RTA/RTF48(T,T-DE)	H17/28(E,U)	L23/30(H)
L/S/K/G50MC-C(ME-C,ME-B,ME-GI)	RTA/RTF50(T,T-DE)	H21/32	L28/32(A,H)
L/S/K/G60MC-C(ME-C,ME-B,ME-GI)	RTA/RTF58(T,T-D,T-B)	H25/33(V)	L27/38
L/S/K/G70MC-C(ME-C,ME-GI)	RTF60C-B	H32/40(V)	L32/40
L/S/K/G80MC-C(ME-C,ME-GI)	RTA62(U)	H35DF(V)	
L/S/K/90MC-C(ME-C,ME-GI)	RTA/RTF68(D)		
L/S/K/98MC-C(ME-C)	RTA 72(U)		
	RTA/RTF82(C,T,T-B)		
	RTA/RTF84(C,M,T,T-D)		
	RTA/RTF96C(C-B)		



Parts Sales

Sales Agent of HHI-EMD'S



2-Stroke Diesel Engine

HHI-EMD has been supplying "One out of Three" of the world's two-stroke diesel engines for marine propulsion and power generation in pursuit of providing our valuable customers with high quality and more economical products. HHI-EMD's established reputation is supported by its superb performance in marine and stationary diesel engines along with its state-of-the-art facilities such as foundry, forging, machining, crankshaft, and assembly & test shops specializing in manufacturing diesel engines.

Products

HYUNDAI-MAN B&W / HYUNDAI-W RTSL / Engine Components

Major Components

- Bed Plates
- Frame Boxes
- Cylinder Liners
- Cylinder Heads
- Cross Head Pins
- Cylinder Frames
- Piston Rods
- Connecting Rods
- CKD/PKD Base Engine Components



Frame Box



Cross Head Pin



Cylinder Head



Bed Plate



Piston



Cylinder Frame



Cylinder Frame



Cylinder Liner



Piston Rod



Connecting Rod



Connecting Rod



Cylinder Cover



Cylinder Liner



Cylinder Head



4-Stroke HIMSSEN Engine

HHI-EMD has developed its own specially designed HIMSSEN engines incorporating its valuable experience and technical know-how acquired in manufacturing diesel engines for over two decades.

The theme "Humans, Technology, and the Future" was synthesized in this new engine.

Also, "HIM" means "power," and "SEN" means "strong" in Korean.

The Hi-Touch concept was introduced to make this truly innovative engine a reality for humanity. It was designed to be the "Most Practical Engine" in regards to both humans and the environment.

Through HYUNDAI'S accumulated technology and experience, this new challenge has been successfully realized.

HHI-EMD also has received certificates of New Technology (NT) and Excellent Machine, Mechanism & Materials (EM) for the HIMSSEN engines from the Ministry of Commerce, Industry & Energy, Korea. HIMSSEN Engine H21/32 and H32/40V were nominated for the international design award of the Federal Republic of Germany after winning Red Dot and International Forum, including Pin Up Design Award 2009. Thus, the HIMSSEN is a highly advanced product that shows HYUNDAI'S deep respect for its customers and the environment.

Products

HIMSSEN H17/21V / H17/28(U,E) / H21/32 (P) / H25/33(V,P) / H32/40(V,P) / H17/24G / H35/40G(V) / H35DF(V) / H46/60V / Components

Major Components

- Cylinder Blocks
- Cylinder Liners
- Cylinder Heads
- Cylinder Covers
- Pistons
- Connecting Rods
- Piston Crowns
- Re-engine Services

Technical Sales

Sales Agent of HHI-EMD'S

ALPHA LUBRICATING SYSTEM

RETROFIT OF ALPHA LUBRICATING SYSTEM

Effect

- Saving of Cyl. oil consumption
- Reduction in Cyl. Liner & Piston ring wear down
- Easier Operation than Mechanical lubricator
- Less smoke formation and Lower NOx Emission Level
- Installable during voyage, dry-docking and at port (working day : 6 days)

Components

- Alpha Lubricator
- Pump Station
- Load Transmitter
- Angle Encoder/ALCU
- Back up trigger system, etc.,

COMPARISON OF CYL. LUBRICATING SYSTEM

Description	Mechanical Type	Alpha Lubricator
Feed Rate	0.9 g/bhp.h (K/L) 1.1 g/bhp.h (S)	5.96 x 0.25 g/bhp.h (Standard 0.8 g/bhp.h)
Oil Consumption	RPM dependent	LOAD dependent
Adjustment of Feed Rate	Pump Stroke (Adjusting Bolt)	Injection Frequency (in HM)
Stroke	Adjustable	Fixed
Injection Frequency	1 / 1 revolution (fixed)	Adjustable (1 / 4 revolution)
Injection Pressure	3 - 5 bar	25 - 30 bar
Oil Actuating Power	Camshaft Rotation	Booster Oil Pressure
Operating Method	Mechanic	Electronic

LUBRICATION PRINCIPLE

- Intermittent lubrication where an engine cycle with lube oil injection is followed by one or more (normally 4) cycles without oil injection
- The injection is timed in relation to the position of the piston ring
- The specific feed rate is controlled by variation of the injection frequency. (solenoid valve on-off interval)
- Adjusting of the feed rate in relation to MEP, LCD and POWER
- Pre-lubrication of the cylinder can be done just before start of the engine. (12 time Continue)
- Reduction of the Emission level
- Element for Intelligent Engine Concept

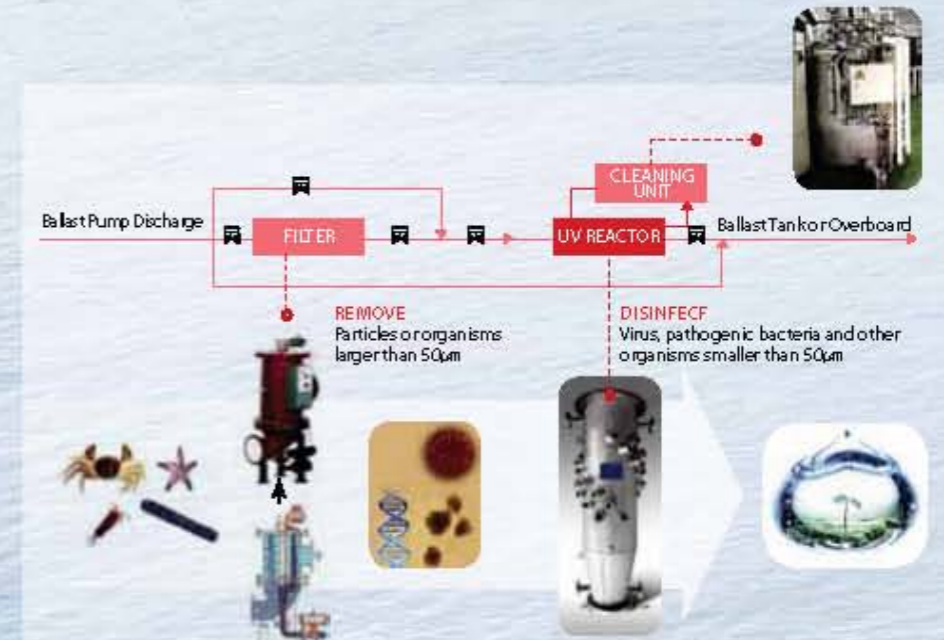
T/C SHUT - OFF

BWTS SYSTEM

HHI has developed a ballast water Treatment system for ships, Eco & HiBallast, which will protect marine environment from the transfer of foreign organisms via ballast water.

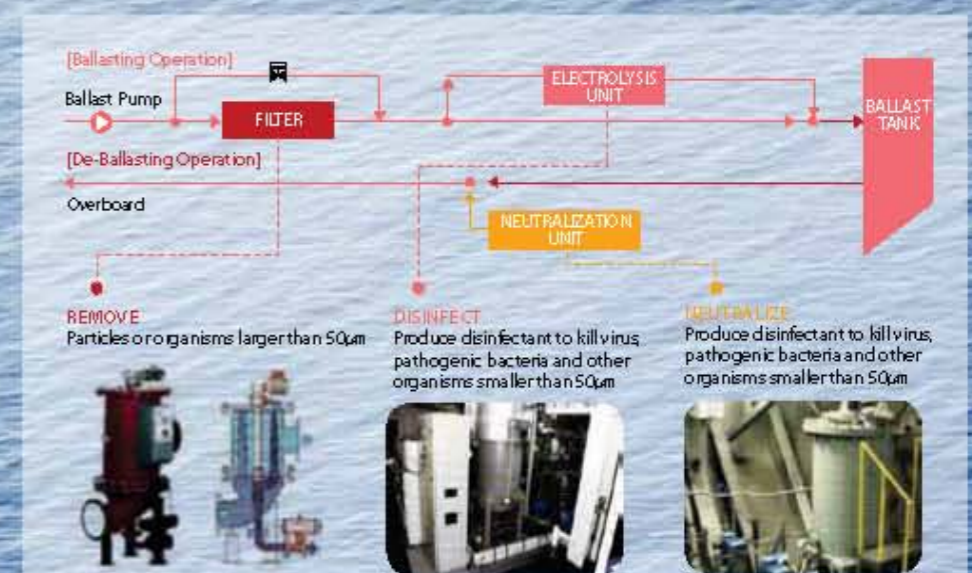
ECOBALLAST IMO Final Approval: March, 2010 Government Type Approval: March, 2011

PROCESS CONFIGURATION



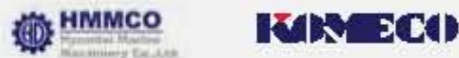
HIBALLAST IMO Final Approval: July, 2011 Government Type Approval: Nov 2011

PROCESS CONFIGURATION



Korean Made Machineries

Certification



LIST OF KOREAN MADE MACHINERY

Makers	Products
Ace Valve	Valve
Bumhan	Main Air Compressor
BY Control	Hydeck Control Valves
CMR Korea	Alarm, Control Systems
Daeho Flowmeter	Flow Meter Control System, Valve Control System
Daeyang	Lighting Fixture, Radar & Radio Equipment
Danfoss	Marine Systems Valve Remote Control System
Donghwa Entec	Heat Exchanger, Cooling System
Georim Eng	Oil Bilge Separator
Hanla Level	Hanla Level Agency
Hanla Level	Tank Level Control System
Hi-Air	Refrigeration Plant, Air Conditioning, Ventilation System
Hyundai Marine	Aux, Blower
Jets	Vacuum Toilet System
Jonghap	Copressor, Sewage Treatment
Jowa	Oil Water Separator
Jung-A	Ladder, Window
KC	Anti-fouling System
Kangrim	Boiler, Heat Exchanger
Keystone	Keystone VV
Mt.H Control Valve	Control, Safety Valve
Pan-Asia	Alarm System, Tank Level Controls
Samgong	Anodes, Ladder, Purifier, Safety, Window, Life Saving
Samgong	Anode, Ladder, Purifier, Windows
Samkun	UV Sterilizer
Samkun	Filter and Equipments
Saracom	Navigation Equipments
ShinShin	Pump & Pumping System
Tae-il	Blower, Ventilation System
Tanktech	High Velocity Pressure Valve
Yoowon	Electric Hydraulic Steering, Fuel & Lub Oil Automatic Filter



- | | | |
|---|---|---|
| 1 | 2 | 3 |
| 4 | 5 | 6 |
| 6 | 7 | |
1. HHI
 2. HHI Service letter
 3. IMPA
 4. Total Lubmarine
 5. DNV
 6. Comtech
 7. Viper Lubricator



Sales for Total Lub Oil

TOTAL LUBMARINE LUBRICANTS FOR THE WORLDWIDE SHIPPING INDUSTRY



APPROVED BY MAIN OEM

HIGH TECH: CYLINDER & SYSTEM OILS

For 2-Stroke engines :

TALUSIA

- Cylinder oil for low-speed engines and heavy fuel oils:
- TALUSIA UNIVERSAL for

all HFO whatever the sulphur content
– TALUSIA HR 70 for high sulphur HFO only

ATLANTA

- System oil for low-speed engines:
- ATLANTA MARINE D

Approved by all 2 stroke engine OEM:

MAN Diesel & Turbo, WÄRTSILÄ, Mitsubishi HI

HIGH TECH: TRUNK PISTON ENGINE OILS

For 4-Stroke engines :

AURELIA TI

- For medium speed Diesel engines: HFO
- SAE 20, 30, 40
- BN 30, 44, 55

DISOLA

- For high & medium-speed engines: MDO and MGO
- SAE 30, 40, 50
- BN 12, 14, 20 Approved by all main OEM like:
WÄRTSILÄ, DEUTZ, SEMT PIELSTICK
MAN DIESEL, YANMAR, GUANGZHOU DIESEL
DAIHATSU, MAK/CATERPILLAR, ROLLS ROYCE, HIMSSEN

DELIVERIES TO VESSELS

- A unique network for deliveries in:
 - 740 listed ports around the world (standard offer),
 - More than 300 non-listed ports (tailor made solutions).
- Compliance with corporate, national and local requirements regarding Quality, Safety and Environment.



SUPPORT OF THE POWER PLANT BUSINESS

- Total Lubmarine supports the Total affiliates and Lubmarine partners in their lubricants business for marine engine based power generation.



INNOVATION: TALUSIA UNIVERSAL

- Only one cylinder lubricant for HFO with sulphur content below 0,5 % and up to 4,5 %!
- For existing and future Emission Controlled Areas



- Existing ECAs: Baltic Sea, North Sea
- Planned ECAs: Coasts of USA, Hawaii and Canada
- Discussed ECAs: Coasts of Mexico, Coasts of Alaska and Great Lakes, Singapore, Hong Kong, Korea, Australia, Black Sea, Mediterranean Sea (2014), Tokyo Bay (in 2015)

General Marine Stores, Provision and Bonded Stores

GENERAL MARINE STORES

INITIAL STORES SUPPLY TO NEW BUILDING VESSELS

Hyundai Heavy Industries Co., Ltd

Hyundai Mipo Dockyard Co., Ltd

Hyundai Samho Heavy Industries Co., Ltd

Samsung Heavy Industries Co., Ltd

Hanjin Heavy Industries Co., Ltd

DSME

STX Shipyard Co., Ltd

SCOPE OF SUPPLY

Clothes & Linen

Tableware & Gallery Utensils

Rope & Hawseers

Rigging Equipment & General Deck Items

Marine Paint & Painting Equipment

Safety Equipment

Hose & Couplings

Nautical Equipment

Medicine

Petroleum Products

Stationery & Hardware

Brushes & Mats, Lavatory Equipment

Cleaning Material & Chemicals

Pneumatic, Electrical Tools & Hand Tools

Cutting & Measuring Tools

Metal Sheets, Bars, Screw & Nuts, Pipes, Tube & Fittings

Packing & Joining, Welding Equipment & Machinery

Welfare Items

Etc (canned, frozen, fresh items, groceries, bottles, etc)

