

THE LIFE MESSENGER

BADA HEAVY INDUSTRIES

Creating a better Technology & Second lifeline



The Life Messenger
BADA

'BADA' means the Ocean in Korean.

The background of the page is a high-resolution photograph of ocean waves. The left side shows a white, foamy wave crest, while the right side is dominated by deep blue, textured water with visible ripples and small waves. The overall color palette is a range of blues, from light turquoise to deep navy.

CONTENTS

04	GREETINGS
06	MATERIAL HANDLING EQUIPMENTS
08	EXCELENCE IN MARINE & OFFSHORE LIFTING APPLIANCES
10	PROVISION CRANE
11	HOSE HANDLING CRANE
12	BRIDGE & ENGINE ROOM CRANE
13	GRAB CRANE
14	SPECIAL SHIP
16	FREE-FALL LIFEBOAT DAVIT
17	LIFE / RESCUE BOAT DAVIT
18	RESCUE BOAT/ LIFE RAFT DAVIT
20	OFF-SHORE LIFEBOAT DAVIT
21	RELEASE MECHANISM
23	SERVICE



>> CEO's MESSAGE

We have been, and will be challenging ceaselessly for the future with our enthusiasm.

BADA Heavy Industries Co., Ltd., a company full of vision, is specialized in the manufacturing materials and equipment for the offshore industry.

BADA Heavy Industries Co., Ltd. has developed and manufactured major materials and equipment for the shipbuilding and offshore projects since 1992 when established. We are ready to create a new wave in the shipbuilding industry. We're assured that BADA Heavy Industries Co., Ltd. will become the cradle in this field.

We will do at our utmost to provide higher satisfaction to our customers with efforts and the continuous growth.

I hope that you can have interests in us and show us your support and encouragement continuously.

Thank you.

CEO of BADA Heavy Industries Co., Ltd.

Eul-Gyu, Lee.

>> BUSINESS ITEM

- Deck-structures
- Ship-fittings
- Auto-facilities
- Plant-facilities.etc.



>> INFORMATION

- PRESIDENT | Eul-Gyu, Lee.
- ESTABLISHMENT | October 1992
- ADDRESS | #135-56 Jinsandae-ro, Jinyoung-eup, Gimhae-city, Gyeongsangnam-do, Rep. of Korea.
- EMPLOYEES | 69
- WEB SITE | <http://www.badahi.co.kr>

>> MATERIAL HANDLING EQUIPMENTS

Each request for material handling equipment concerning electro, pneumatic, hydraulic mechanical systems is different. Our engineers know how to deal with that as they have experienced for a long time.

We provide not only the needs of the company but also extensive engineering consulting in complicated technical situations.



- Trolley hoist (Manual, Pneumatic, Electro type-explosion proof type.)



- Maintenance winches
- Luggage davit (Explosion proof type)



- Jib crane with trolley hoists. (Pedestal & Wall mount type)



• Manual fork lift



• Scissors lift table



• Manual stacker



• Electric stacker



• Overhead crane (Gantry & Bridge crane, other types)



• Mini Pusher



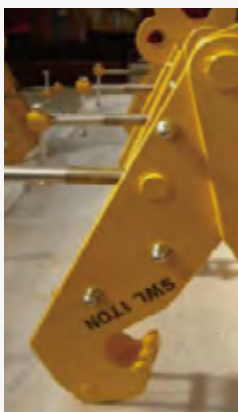
• Small davit (Portable & Permanent type)



• Floor Truck



• Tripod



• Beam clamp



• Scissors lift



• Elephant crane



• Mobile floor crane

» EXCELENCE IN MARINE & OFFSHORE LIFTING APPLIANCES

TRUST IN LIFTING APPLIANCES SINCE 1992.



• ENGINE ROOM CRANE



• MONORAIL CRANE



• BRIDGE CRANE



• HOSE HANDLING CRANE



• PROVISION & RESCUE BOAT COMBINED CRANE



• WIRE LUFFING TYPE CRANE



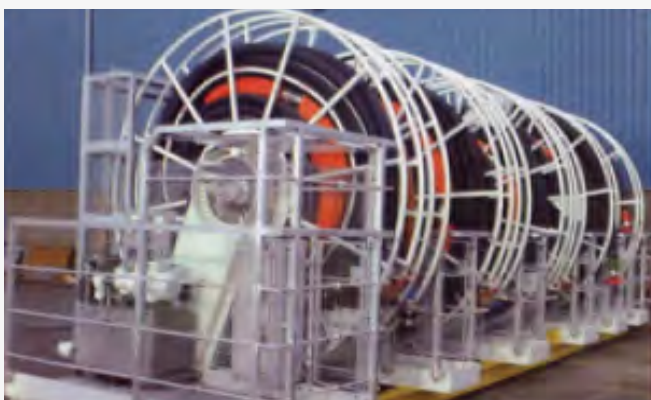
• GRAB CRANE



• FENDER DAVIT



• ANCHOR MOORING WINCH



• BUNKER STATION (HOSE REEL)



• A-FRAME

PROVISION CRANE(COMBINED RESCUE BOAT HANDLING)

We are proud of BADA PROVISION CRANE for its long life time & safe operation even in the harsh sea condition. It is the combined type for handling provision and rescue boat, so can be also used as a rescue boat launching appliance.

SPEC

MODEL	CAPACITY (TON)	OUTREACH (M)	CRANE SIZE	HOISTING SPEED (SEC)	LUFFING SPEED (SEC)	SLEWING SPEED (RPM)
BHPC	1	~ 16	55	10	40	0.8
	2	~ 14	55	10	40	0.8
		14.5 ~ 18	75	10	55	0.7
		18.5 ~ 22	100	10	65	0.6
		~ 10	55	10	55	0.8
	3	10.5 ~ 15	75	10	75	0.7
		15 ~ 19	100	10	85	0.6
		19.5 ~ 22	160	10	95	0.6
	3.2	~ 10	55	10	55	0.7
		10.5 ~ 14	75	10	80	0.6
		14.5 ~ 18	100	10	90	0.6
		18.5 ~ 20	160	10	100	0.6
	4	~ 8.5	55	10	55	0.7
		9 ~ 12	75	10	80	0.6
		12.5 ~ 15.5	100	10	95	0.6
		16 ~ 20	160	10	100	0.6
		20.5 ~ 23	200	10	110	0.6
	5	~ 9.5	75	10	55	0.7
		10 ~ 13	100	10	80	0.6
		13.5 ~ 18	160	10	95	0.6
		18.5 ~ 23	200	10	110	0.6

MODEL	CAPACITY (TON)	OUTREACH (M)	CRANE SIZE	HOISTING SPEED (SEC)	LUFFING SPEED (SEC)	SLEWING SPEED (RPM)
BHPC	6.3	~ 11	100	10	60	0.7
		11.5 ~ 15	160	10	85	0.6
		15.5 ~ 20	200	10	100	0.6
		20.5 ~ 22	250	10	110	0.6
	8	~ 9	100	10	70	0.7
		9.5 ~ 12	160	10	95	0.6
		12.5 ~ 17	200	10	102	0.6
		17.5 ~ 21	250	10	115	0.6
	9	~ 9.5	160	10	80	0.7
		10 ~ 15.5	200	10	95	0.6
		16 ~ 19	250	10	105	0.6
		19.5 ~ 21	300	10	120	0.6
	10	~ 9	160	10	85	0.7
		9.5 ~ 14	200	10	95	0.6
		14.5 ~ 16	250	10	105	0.6
		16.5 ~ 18	300	10	110	0.5
		18.5 ~ 22	350	10	115	0.5
	12.5	22.5 ~ 24	400	10	120	0.5
		~ 10	160	10	85	0.7
		10.5 ~ 12.5	200	10	95	0.6
		13 ~ 14	250	10	105	0.6
		14.5 ~ 16	300	10	110	0.6
		16.5 ~ 19	350	10	115	0.5
		19.5 ~ 22	400	10	120	0.5



HOSE HANDLING CRANE

BADA Hose handling crane has been operated in severe situations.

This shows safe but simple operating system with long life time.

○ SPEC

MODEL	CAPACITY (TON)	OUTREACH (M)	CRANE SIZE	HOISTING SPEED(SEC)	LUFFING SPEED(SEC)	SLEWING SPEED(RPM)
BHHC	5	13.5 ~ 18	160	10	100	0.6
		18.5 ~ 23	200	10	115	0.5
		23 ~ 25	250	10	125	0.5
	7.5	15 ~ 18	200	10	115	0.6
		18.5 ~ 21	250	10	125	0.6
		21.5 ~ 24	300	10	130	0.5
	10	14.5 ~ 16	250	10/20	125	0.6
		16.5 ~ 18	300	10/20	130	0.6
		18.5 ~ 22	350	10/20	135	0.6
		22.5 ~ 24	400	10/20	140	0.5
		25 ~ 28	500	10/20	145	0.5
	15	15 ~ 17	350	10/20	135	0.6
		17.5 ~ 19	400	10/20	140	0.6
		19.5 ~ 22	500	10/20	150	0.6
		22.5 ~ 26.5	630	10/20	155	0.5
		27 ~ 30	800	10/20	160	0.5
	20	~ 15	400	10/20	145	0.6
		15.5 ~ 18	500	10/20	150	0.6
		18.5 ~ 22	630	10/20	160	0.6
		22.5 ~ 25	800	10/20	170	0.5
	25	~ 17.5	630	10/20	160	0.6
		18 ~ 23	800	10/20	170	0.5
		23.5 ~ 27	900	10/20	175	0.5



BRIDGE & ENGINE ROOM CRANE

BADA Overhead crane secures larger working spaces in Engine room to make more efficient & easier maintenances.

SPEC

MODEL	TYPE		CAPACITY (TON)	LIFTING HEIGHT (M)	HOISTING SPEED		TRAVELLING SPEED (M/MIN)	TRAVERSING SPEED (M/MIN)
					SLOW (M/MIN)	FAST (M/MIN) "IF 1 SPEED"		
BECL	LOW HEAD	CHAIN TYPE	1~5	15	1.3	3.25 or 4.1 or 5.15	5	3 OR 3.5
BECW		WIRE TYPE	1~12	15	0.25 or 0.3	2.5 or 3	5	3 OR 3.5
BECO	OVER-HEAD	WIRE TYPE	4~12	15	0.25 or 0.3	2.5 or 3	5	3 OR 3.5



MONORAIL CRANE

BADA's Mono-rail crane serves optimal design spaces and functions in loading provisions of vessel.

SPEC

MODEL	CAPACITY (TON)	LIFTING HEIGHT	MAX. OUTREACH	HOISTING SPEED	TRAVELLING SPEED
BMRC	3	40 M	2.5 ~ 6 M	10 M/MIN	10 M/MIN
	5	40 M	2.5 ~ 7 M	10 M/MIN	10 M/MIN
	8	40 M	2.5 ~ 8 M	10 M/MIN	10 M/MIN
	10	40 M	2.5 ~ 9 M	10 M/MIN	10 M/MIN
	13	45 M	2.5 ~ 10 M	10 M/MIN	10 M/MIN
	15	45 M	2.5 ~ 11 M	10 M/MIN	10 M/MIN



GRAB CRANE

BADA grab cranes aim to the specific requirements of various customers. No matter how efficient & short cycle time and high trans-shipment capacity or durability are required, our products are safe and reliable enough.

SPEC

Max. lifting capacity (with 12t Grab)	SWL 36 ton at 6M~30M
Max. lifting capacity, General cargo	SWL 45 ton at 6M~30M
Max. working radius	30M
Min. working radius	6M
Hoisting speed at full load	0~50 M/min.
Lowering speed at full load	0~55 M/min.
Hoisting & lowering speed at empty grab	0~75 M/min.
Hoisting & lowering speed, General cargo	0~20 M/min.
Lifting height(main)	40 M
Luffing angle	79°
Slewing speed at SWL	0~1.5 rpm
Slew range	270°Limited
15	45 M



PICTURES

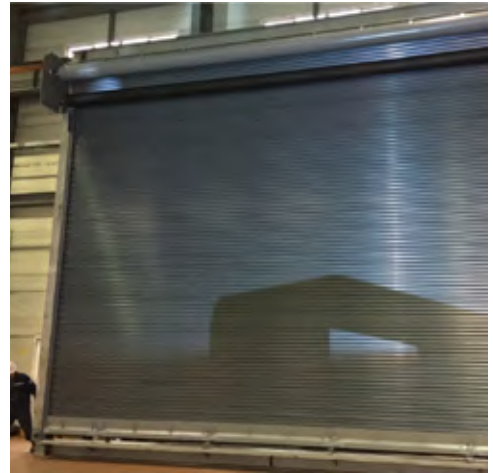


SPECIAL SHIP

Since 1992, BADA has been supplying various types of special equipment to the navy and police ships. If you look into our records with accumulated technical information, you'll be assured how skilled we're.



- Hanger door system



- Helicopter traversing system

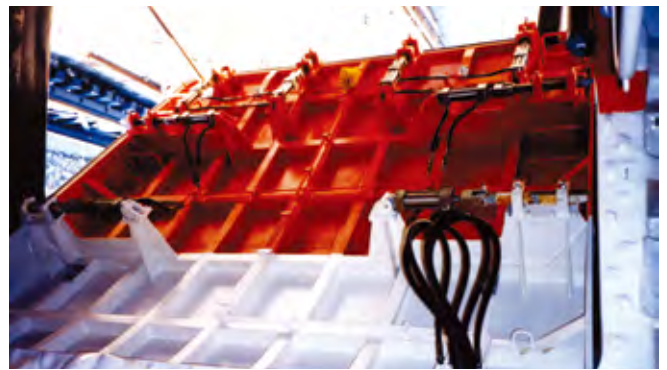


- Telescopic provision & Rescue boat combined crane





- Landing davit



- Ship stern door



- Submarine Salvaging Unit



- Deck machinery (Non magnetic type)



- RIB DAVIT (Non magnetic type)



- Telescopic Knuckle Crane



- Mine laying Unit

>> FREE-FALL LIFEBOAT DAVIT

This equipment is used to launch free-fall type life boat, and is installed at stern of a ship. Under IMO Pact, the installation of this equipment has been mandatory for freight ships since July 2006.

Free fall lifeboat davit of BADA Heavy Industries is designed to ensure fast and safe rescue of human life, conforming to the recent standard of SOLAS.

It is the most excellent launching equipment with high reliability and stability from mechanical and structural perspective.



○ SPEC

MODEL	PERSON OF CAPACITY	M.W.L(Kg)	REMARKS
BDF25S	Max. 25P	7,200	1. Free fall launching type 2. SOLAS rule as amended 3. Hyd. Winch operation 4. M.E.D. Type approved.
BDF35S	Max. 35P	8,001.5	
BDF90S	Max. 43P	9,748	
BDF120S	Max. 60P	15,750	
BDF150S	Max. 80P	21,600	

○ PICTURES



>> LIFE / RESCUE BOAT DAVIT

(HINGED GRAVITY TYPE)

This is installed on both sides of a ship and is the life-saving and salvaging equipment installed universally in various ships.

It launches and pulls up a life boat & rescue boat to rescue people with safety from the water. It operates with falls and a winch.



○ SPEC

MODEL	PERSON OF CAPACITY	M.W.L(Kg)	REMARKS
BDH58S	Max. 32	5,800	1. Gravity lowering type 2. SOLAS as amended 3. Elec. Winch driven 4. M.E.D. Type approved.
BDH70S	Max. 40	7,000	
BDH90S	Max.61	9,600	
BDH125S	Max. 90	12,500	
BDH200S	Max. 150	20,000	

○ PICTURES



» RESCUE BOAT/LIFE RAFT DAVIT (COMBINED TYPE)



RESCUE BOAT / LIFE RAFT DAVIT(COMBINED TYPE)

Rescue boat and life-raft combined type davit. It operates up to the full weight of life raft. It was designed by SOLAS rules as amended. Using remote control wire, crews can operate release system. For emergency, hydraulic accumulator will be replaced with the electric force.

○ SPEC

MODEL	MAX. WORKING LOAD		REMARKS
	RESCUE BOAT	LIFE RAFT	
BDR25S	1,100 Kg	2,350 Kg	1. Elec.Hoist & Hyd. Slewing single arm type. 2. M.E.D. Type approved.
BDR35S	1,100 Kg	3,300 Kg	

RESCUE BOAT DAVIT(A-FRAME ELEC. PIVOT HINGE TYPE)

○ SPEC

MODEL	HOISTING	LOWERING SPEED	MAX. WORKING LOAD
BDP06S	Min. 18m/min	Min. $S = 0.4 + 0.02(H)$	1,200 Kg

FAST RESCUE BOAT DAVIT(A-FRAME PIVOT HINGE TYPE)

○ SPEC

MODEL	HOISTING SPEED	LOWERING SPEED	MAX. WORKING LOAD
BDFA33S	Min. 48m/min	Min. $S=0.4+0.02(H)$ Max.1m/sec	3,500 Kg

○ PICTURES



OFF-SHORE LIFEBOAT DAVIT

An offshore lifeboat davit is essential to secure the safety.

Bada offshore davits have been tested in several harsh conditions and satisfied our particular customers.

SPEC

MODEL	PERSON OF CAPACITY	M.W.L(Kg)	REMARKS
BDM70S	Max. 45	7,000	1. Gravity lowering 2. Stepless type 3. SOLAS as amended 4. Elec. Winch driven 5. M.E.D. Type approved.
BDM130S	Max. 84	13,000	
BDM170S	Max. 100	17,000	



PICTURES

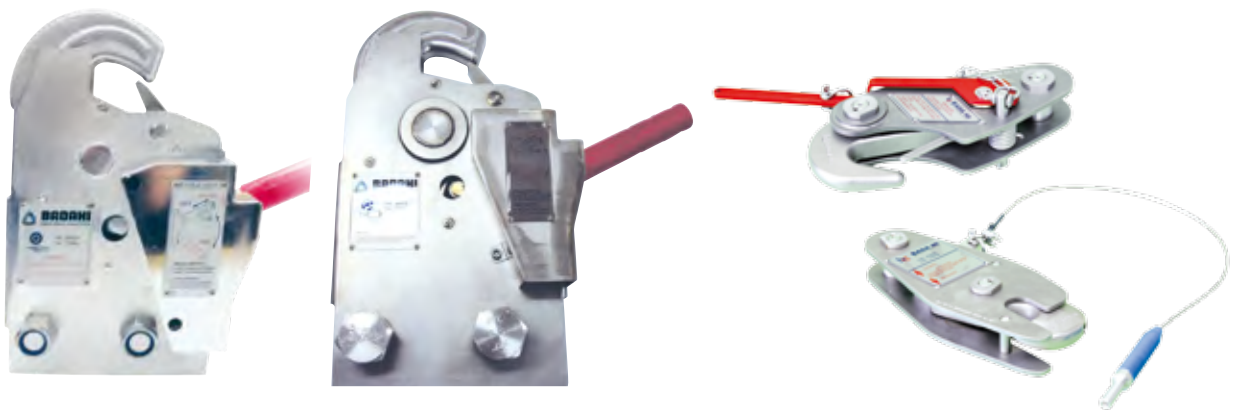


RELEASE MECHANISM

The BADA HI Release hook is designed to carry out and launch rescue boats and similar crafts in compliance with the latest regulation of SOLAS. BADA HI Release hooks are manufactured in complicated and strict tests.

SPEC

MODEL	S.W.L	USE	REMARKS
BHR25S	2.5 Ton	For rescue boat	M.E.D Type Approved
BHA25S	2.5 Ton	For liferaft	
BHA40S	4.0 Ton	For liferaft	
BHR35F	3.5 Ton	For fast rescue boat	
BHR60F	6.0 Ton	For fast rescue boat	
BHR80F	8.0 Ton	For fast rescue boat	



HOOK SIMULATION TEST LAB



We consider Customer Satisfaction with Safety

Provide best inspection, repair services through superb engineers





○ BADA HI's representatives in

Argentina	Czech	India	Norway	Spain
Australia	Denmark	Iran	Panama	Taiwan
Belgium	Egypt	Italy	Portugal	Turkey
Brazil	Estonia	Japan	Poland	U.A.E.
Canada	France	Korea	Romania	UK
Chile	Germany	Lavia	Russia	Uruguay
China	Greece	Malaysia	Singapore	USA
Costarica	Holland	Malta	South Africa	Vietnam

○ SERVICE

Service Agent Network

Under the current IMO(International Maritime Organization) ragulation(MSC Cir. 1260, Resolution 152(78) effective from July 1, 2006, only those who were trained and by the manufacturer of lifeboat and those certified can carry out the inspection, repair, maintenance, and repair of lifeboat.

Our company has invested many efforts to ensure best inspection, repair, etc over the last three years, while minimizing the inconvenience to customers which may arise from the aforesaid regulation.

As a result, our company has built a network of companies composed of 96 agencies of 42 countries as of April 2010, and has educated more than certified 300 engineers.

○ SERVICE INFORMATION

E-Mail : spare@badahi.co.kr

Tel : 055-720-1021~23

Creating a better Technology & Second lifeline

BADA
HEAVY INDUSTRIES

www.badahi.co.kr

#135-56 Jinsandae-ro, Jinyoung-eup, Gimhae-city, Gyung-sangnam-do, Rep. of Korea

SALES DEPT.

TEL | +82-55-720-1021~23 **FAX** | 055-345-2136

E-MAIL | marketing@badahi.co.kr

ADMIN. DEPT.

TEL | 055-720-1000 **FAX** | 055-720-1010

본 홍보물은 산업통상자원부, 한국산업기술진흥원에서 시행하고 전남테크노파크에서 추진하는 경제협력권산업육성사업 조선해양플랜트 기업지원사업으로 제작되었습니다.